

# Homoclinic orbits in the Suspension bridge equation



Jean-Philippe Lessard



Maxime Breden



JB van den Berg



Maxime Murray

# Suspension bridge equation

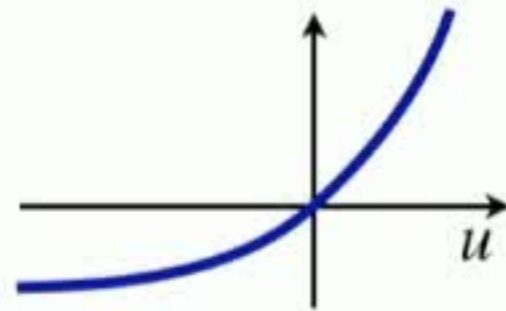
$$\frac{\partial^2 v}{\partial t^2} = -\frac{\partial^4 v}{\partial x^4} - e^v + 1$$



# Some previous work

$$u'''' + c^2 u'' + e^u - 1 = 0$$

- periodic solutions: Peletier & Troy



# Some previous work

$$u'''' + c^2 u'' + e^u - 1 = 0$$

- periodic solutions: Peletier & Troy



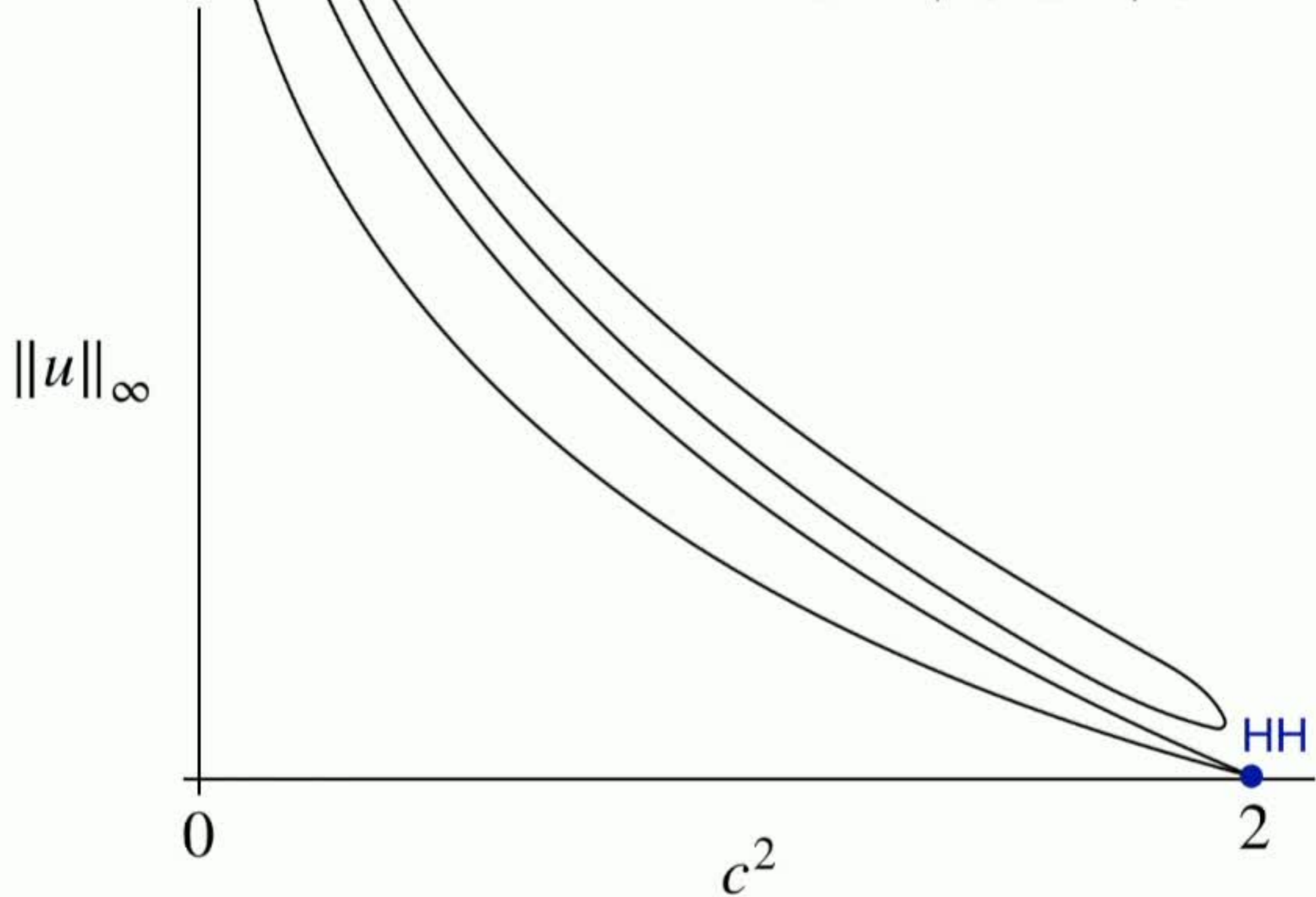
$$u'''' + c^2 u'' + \max\{u, -1\} = 0$$

- homoclinic solutions:  
Mc-Kenna, Chen, Champneys  
theorems, numerics, conjectures



# Homoclinic solutions

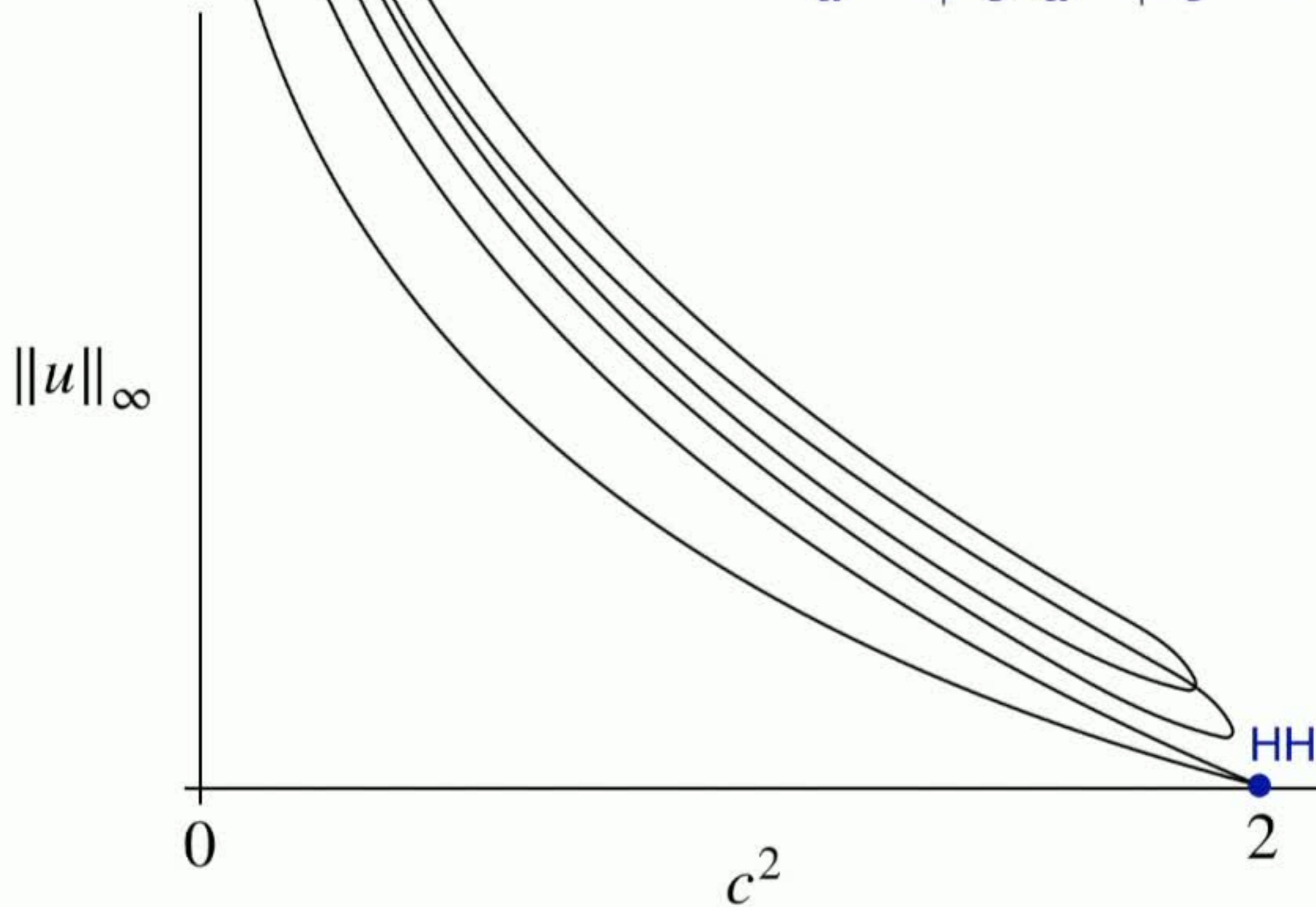
$$u'''' + c^2 u'' + e^u - 1 = 0$$





# Homoclinic solutions

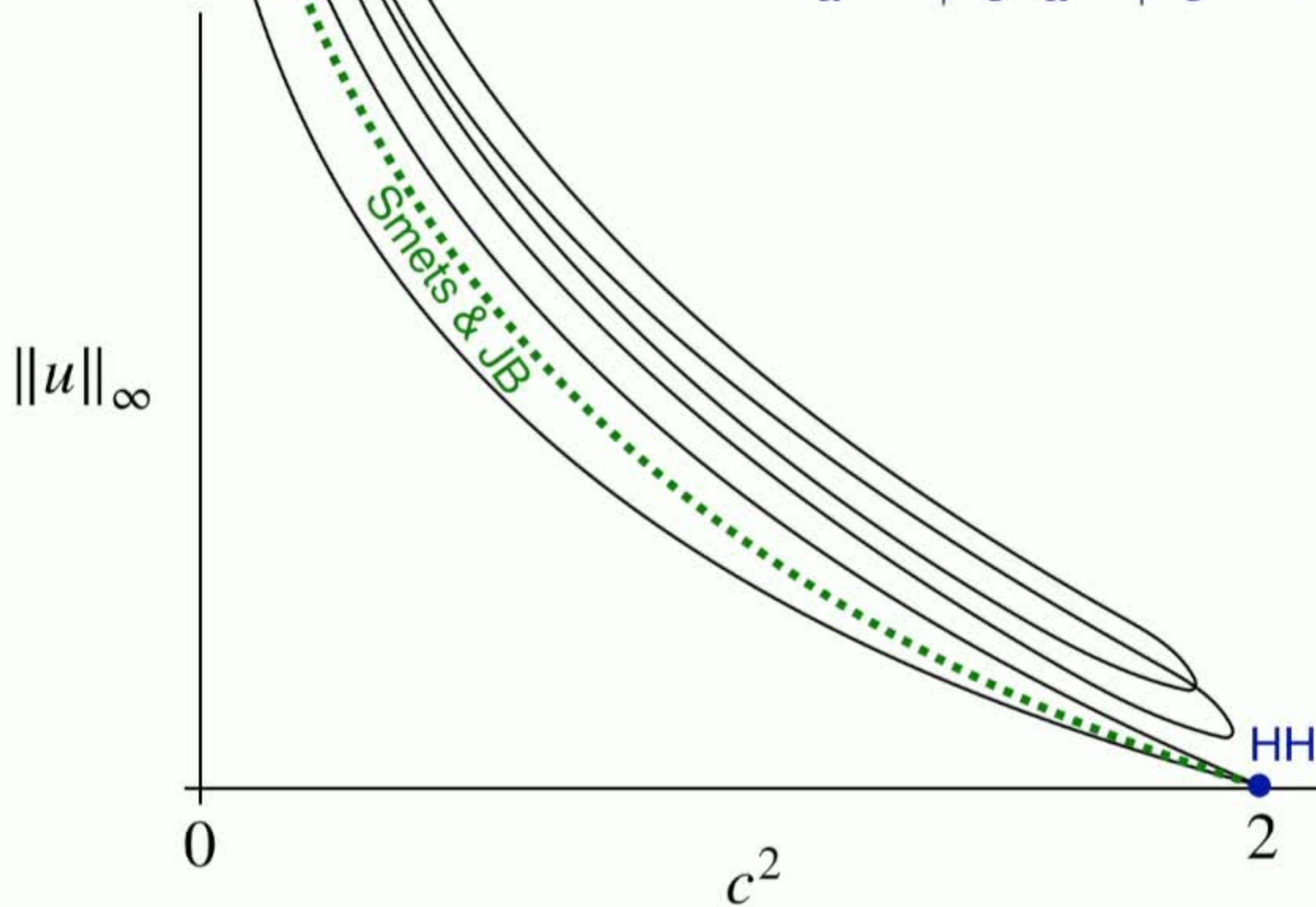
$$u'''' + c^2 u'' + e^u - 1 = 0$$





# Homoclinic solutions

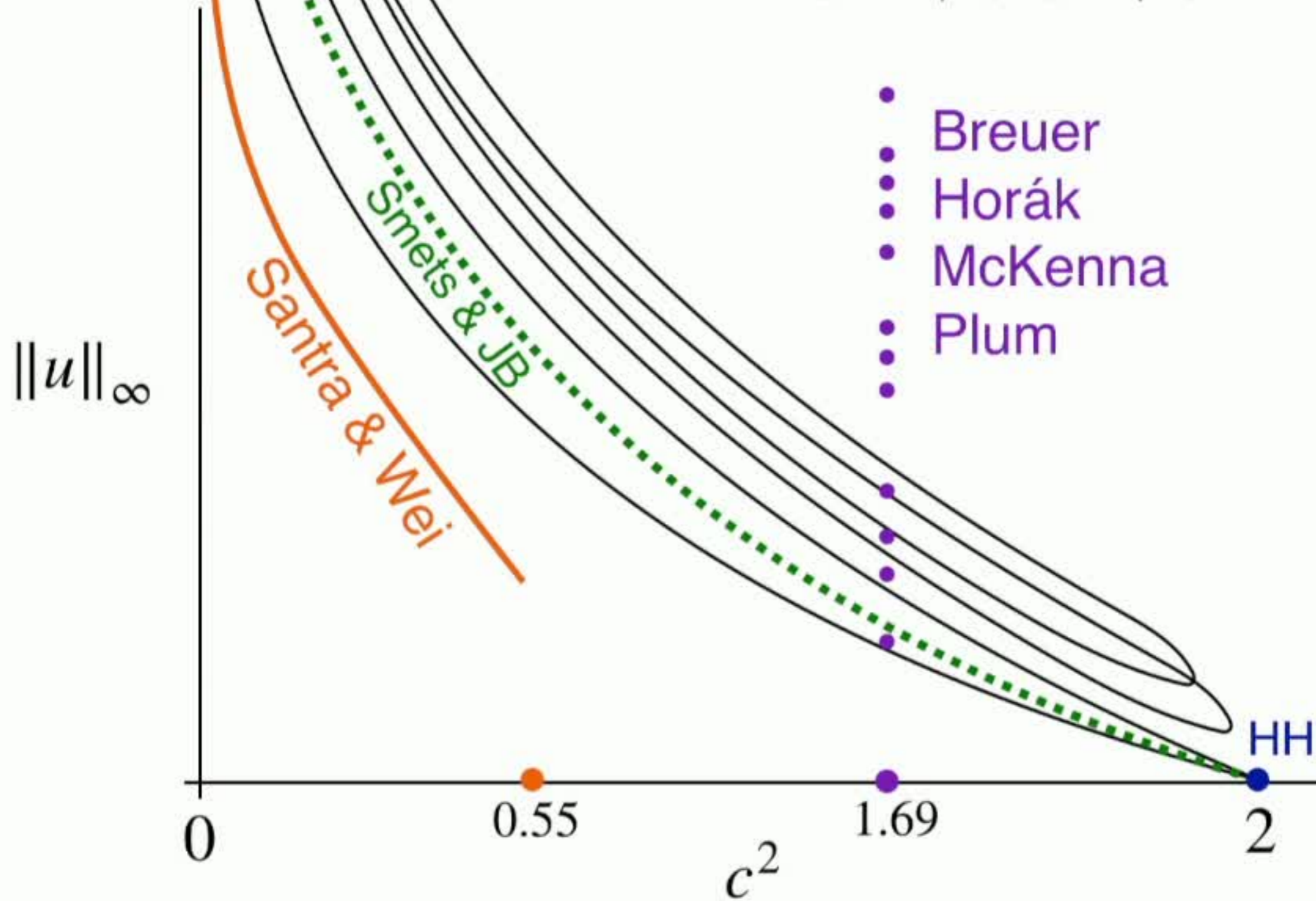
$$u'''' + c^2 u'' + e^u - 1 = 0$$





# Homoclinic solutions

$$u'''' + c^2 u'' + e^u - 1 = 0$$



# Write it as a system

$$u'''' + c^2 u'' + e^u - 1 = 0$$

$$\begin{cases} u_1 = e^u - 1 \\ u_2 = u' \\ u_3 = u'' \\ u_4 = u''' \end{cases} \quad \begin{cases} u_1' = (u_1 + 1)u_2 \\ u_2' = u_3 \\ u_3' = u_4 \\ u_4' = -c^2 u_3 - u_1 \end{cases}$$

# Write it as a system

$$u'''' + c^2 u'' + e^u - 1 = 0$$

$$\begin{cases} u_1 = e^u - 1 \\ u_2 = u' \\ u_3 = u'' \\ u_4 = u''' \end{cases} \quad \begin{cases} u_1' = (u_1 + 1)u_2 \\ u_2' = u_3 \\ u_3' = u_4 \\ u_4' = -c^2 u_3 - u_1 \end{cases}$$

$$\frac{du}{dt} = f(u)$$

Equilibria  $u_-, u_+$

$$\lim_{t \rightarrow -\infty} u(t) = u_-$$

$$\lim_{t \rightarrow +\infty} u(t) = u_+$$

# Boundary Value Problem

$$\begin{cases} u'(t) = f(u(t)) & t \in [-L, L] \\ u(-L) \in W_{\text{loc}}^u(u_-) \\ u(L) \in W_{\text{loc}}^s(u_+) \end{cases}$$

- local manifolds  $W_{\text{loc}}^u(u_-)$  and  $W_{\text{loc}}^s(u_+)$ 
    - use parametrization method  
Cabré, Fontich, de la Llave  
Taylor series
  - in transition  $-L \leq t \leq L$ 
    - use Chebyshev series  
Chebyshev  $\approx$  Fourier
- Lessard-Reinhardt  
Sheombarsing-JB

# Boundary Value Problem

$$\begin{cases} u'(t) = f(u(t)) & t \in [-L, L] \\ u(-L) \in W_{\text{loc}}^u(u_-) \\ u(L) \in W_{\text{loc}}^s(u_+) \end{cases}$$

- local manifolds  $W_{\text{loc}}^u(u_-)$  and  $W_{\text{loc}}^s(u_+)$ 
    - use parametrization method  
Cabré, Fontich, de la Llave  
Taylor series
  - in transition  $-L \leq t \leq L$ 
    - use Chebyshev series  
Chebyshev  $\approx$  Fourier
- Lessard-Reinhardt  
Sheombarsing-JB







# Local (un)stable manifold

$$P: \mathbb{R}^2 \rightarrow \mathbb{R}^4$$

- parametrizes local unstable manifold
- analytic (non-resonance condition)
- conjugates linear flow
- similar to normal form
- compute  $P_N$  iteratively
- error estimate (work)
- control of derivatives (analyticity)

Mireles-James



# Chebyshev polynomials

$$\begin{cases} u'(t) = Lf(u(t)) & t \in [-1, 1] \\ u(-1) = P(\theta) \\ u(1) = Q(\phi) \end{cases}$$

- $u(t) = a_0 + 2 \sum_{k=1}^{\infty} a_k T_k(t)$
- $T_k(\cos \theta) = \cos(k\theta)$

# Chebyshev polynomials

$$\begin{cases} u'(t) = Lf(u(t)) & t \in [-1, 1] \\ u(-1) = P(\theta) \\ u(1) = Q(\phi) \end{cases}$$

- $u(t) = a_0 + 2 \sum_{k=1}^{\infty} a_k T_k(t)$
- $T_k(\cos \theta) = \cos(k\theta)$

# Chebyshev polynomials

$$\begin{cases} u'(t) = Lf(u(t)) & t \in [-1, 1] \\ u(-1) = P(\theta) \\ u(1) = Q(\phi) \end{cases} \quad \bullet \quad u(t) = a_0 + 2 \sum_{k=1}^{\infty} a_k T_k(t)$$
$$\bullet \quad T_k(\cos \theta) = \cos(k\theta)$$

$$\begin{cases} 2ka_k = L(\hat{f}_{k-1}(a) - \hat{f}_{k+1}(a)) & k = 1, 2, \dots \\ a_0 + 2 \sum (-1)^k a_k = P(\theta) \\ a_0 + 2 \sum a_k = Q(\phi) \end{cases}$$

# Chebyshev polynomials

$$\begin{cases} u'(t) = Lf(u(t)) & t \in [-1, 1] \\ u(-1) = P(\theta) \\ u(1) = Q(\phi) \end{cases} \quad \bullet \quad u(t) = a_0 + 2 \sum_{k=1}^{\infty} a_k T_k(t)$$
$$\bullet \quad T_k(\cos \theta) = \cos(k\theta)$$

$$\begin{cases} 2ka_k = L(\hat{f}_{k-1}(a) - \hat{f}_{k+1}(a)) & k = 1, 2, \dots \\ a_0 + 2 \sum (-1)^k a_k = P(\theta) \\ a_0 + 2 \sum a_k = Q(\phi) \end{cases}$$

# Chebyshev polynomials

$$\begin{cases} u'(t) = Lf(u(t)) & t \in [-1, 1] \\ u(-1) = P(\theta) \\ u(1) = Q(\phi) \end{cases} \quad \bullet \quad u(t) = a_0 + 2 \sum_{k=1}^{\infty} a_k T_k(t)$$
$$\bullet \quad T_k(\cos \theta) = \cos(k\theta)$$

$$\begin{cases} 2ka_k = L(\hat{f}_{k-1}(a) - \hat{f}_{k+1}(a)) & k = 1, 2, \dots \\ a_0 + 2 \sum (-1)^k a_k = P(\theta) \\ a_0 + 2 \sum a_k = Q(\phi) \end{cases}$$

$$\text{Unknowns: } \begin{cases} \theta \in \mathbb{R}^2 \\ \phi \in \mathbb{R}^2 \\ a_k \in \mathbb{R}^4 & k = 0, 1, 2, \dots \end{cases}$$

# a-posteriori Newton-Kantorovich



$$F(x) = 0$$



# Infinite dimensions

infinite dimensional nonlinear problem


$$F(x) = 0$$

$F : X \rightarrow X'$      $X, X'$  Banach spaces

Finite dimensional reduction

$N$ -dimensional subspaces

$$X_N \subset X \quad X'_N \subset X'$$

- truncated problem     $F_N : X_N \rightarrow X'_N$
- solve numerically     $F_N(\bar{x}_N) \approx 0$  
- numerical “solution”     $\bar{x}_N = \bar{x} \in X_N \subset X$

# Infinite dimensions

infinite dimensional nonlinear problem


$$F(x) = 0$$

$F : X \rightarrow X'$       $X, X'$  Banach spaces

Finite dimensional reduction

$N$ -dimensional subspaces

$$X_N \subset X \quad X'_N \subset X'$$

- truncated problem      $F_N : X_N \rightarrow X'_N$
- solve numerically      $F_N(\bar{x}_N) \approx 0$  
- numerical “solution”      $\bar{x}_N = \bar{x} \in X_N \subset X$

# Fixed point operator

$$F(x) = 0 \quad F : X \rightarrow X'$$

$$T(x) = x \quad T : X \rightarrow X$$



# Fixed point operator

$$F(x) = 0 \quad F : X \rightarrow X'$$

$$T(x) = x \quad T : X \rightarrow X$$

$$T(x) = x - DF(x)^{-1}F(x)$$

# Contraction mapping

- $T$  maps  $B_r(\bar{x}) \subset X$  into itself
- $\|T(x) - T(\tilde{x})\|_X \leq \kappa \|x - \tilde{x}\|_X \quad \kappa < 1$

## Analytic estimates

$$\|T(\bar{x}) - \bar{x}\|_X \leq Y$$

$$\|DT(x)\|_{B(X)} \leq Z(r) \quad \forall x \in B_r(\bar{x})$$

**Inequality**  $Y + \hat{r}Z(\hat{r}) < \hat{r}$

# Contraction mapping

- $T$  maps  $B_r(\bar{x}) \subset X$  into itself
- $\|T(x) - T(\tilde{x})\|_X \leq \kappa \|x - \tilde{x}\|_X \quad \kappa < 1$

## Analytic estimates

$$\|T(\bar{x}) - \bar{x}\|_X \leq Y$$

$$\|DT(x)\|_{B(X)} \leq Z(r) \quad \forall x \in B_r(\bar{x})$$

**Inequality**  $Y + \hat{r}Z(\hat{r}) < \hat{r}$

# Contraction mapping

- $T$  maps  $B_r(\bar{x}) \subset X$  into itself
- $\|T(x) - T(\tilde{x})\|_X \leq \kappa \|x - \tilde{x}\|_X \quad \kappa < 1$

## Analytic estimates

$$\|T(\bar{x}) - \bar{x}\|_X \leq Y$$

$$\|DT(x)\|_{B(X)} \leq Z(r) \quad \forall x \in B_r(\bar{x})$$

**Inequality**  $Y + \hat{r}Z(\hat{r}) < \hat{r}$



Intlab





# Contraction mapping

- $T$  maps  $B_r(\bar{x}) \subset X$  into itself
- $\|T(x) - T(\tilde{x})\|_X \leq \kappa \|x - \tilde{x}\|_X \quad \kappa < 1$

## Analytic estimates

$$\|T(\bar{x}) - \bar{x}\|_X \leq Y$$

$$\|DT(x)\|_{B(X)} \leq Z(r) \quad \forall x \in B_r(\bar{x})$$

**Inequality**  $Y + \hat{r}Z(\hat{r}) < \hat{r}$



Intlab

# Contraction mapping

- $T$  maps  $B_r(\bar{x}) \subset X$  into itself
- $\|T(x) - T(\tilde{x})\|_X \leq \kappa \|x - \tilde{x}\|_X \quad \kappa < 1$

## Analytic estimates

$$\|T(\bar{x}) - \bar{x}\|_X \leq Y$$

$$\|DT(x)\|_{B(X)} \leq Z(r) \quad \forall x \in B_r(\bar{x})$$

**Inequality**  $Y + \hat{r}Z(\hat{r}) < \hat{r}$



Intlab

# Contraction mapping

- $T$  maps  $B_r(\bar{x}) \subset X$  into itself
- $\|T(x) - T(\tilde{x})\|_X \leq \kappa \|x - \tilde{x}\|_X \quad \kappa < 1$

## Analytic estimates

$$\|T(\bar{x}) - \bar{x}\|_X \leq Y$$

$$\|DT(x)\|_{B(X)} \leq Z(r) \quad \forall x \in B_r(\bar{x})$$

**Inequality**  $Y + \hat{r}Z(\hat{r}) < \hat{r}$

•  $x_{\text{sol}}$

•  $\bar{x}$



Intlab

# a-posteriori Newton-Kantorovich

**Statement:** assume bounds

$$\|T(\bar{x}) - \bar{x}\|_X \leq Y$$

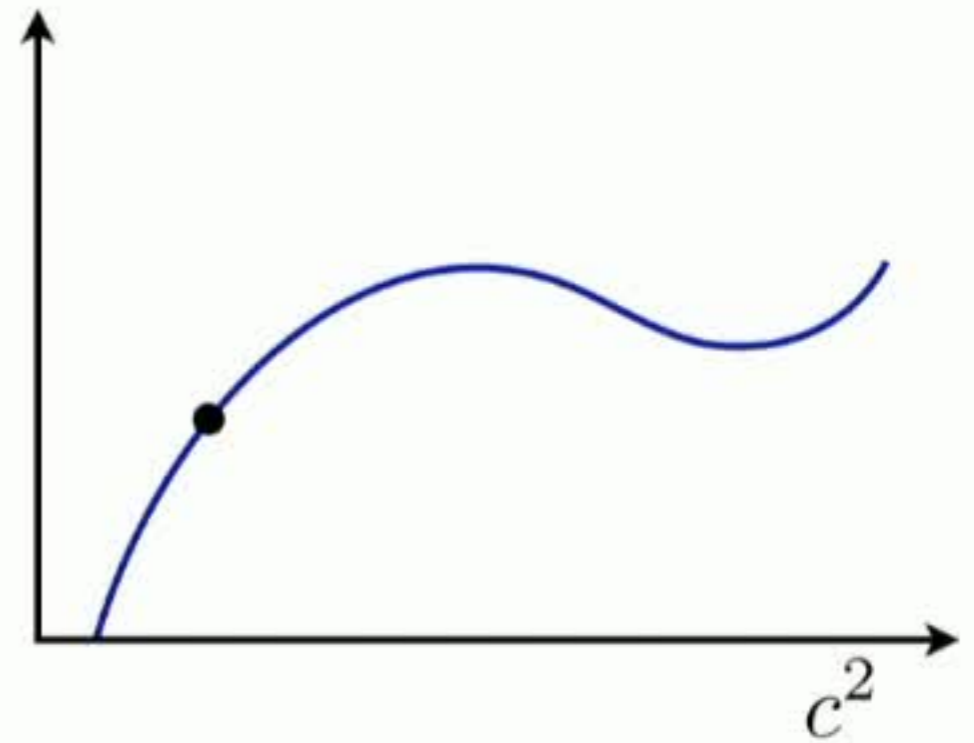
$$\|DT(x)\|_{B(X)} \leq Z(r) \quad \forall x \in B_r(\bar{x})$$

**If**  $Y + \hat{r}Z(\hat{r}) < \hat{r}$

# Continuation

Continuation parameter  $c^2$

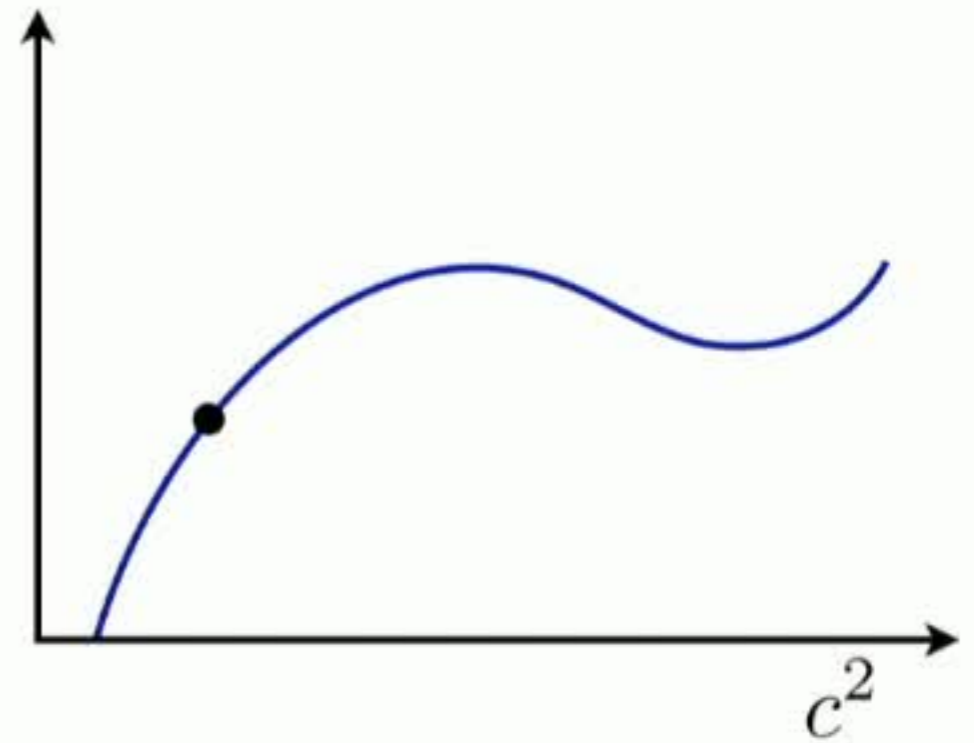
Uniform contraction principle



# Continuation

Continuation parameter  $c^2$

Uniform contraction principle



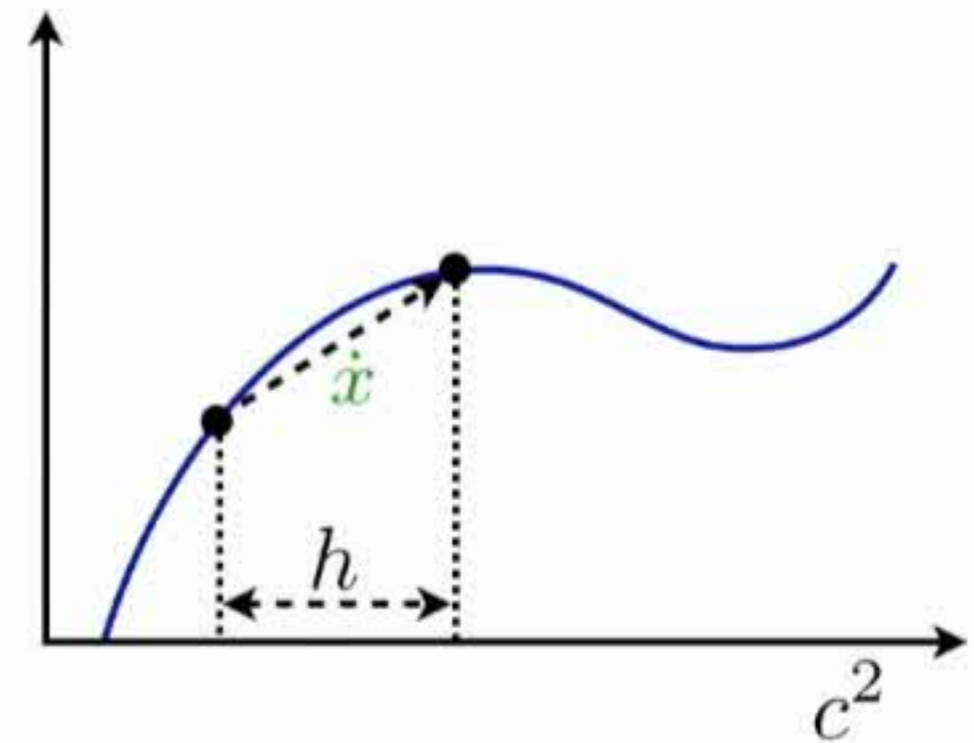
# Continuation

Continuation parameter  $c^2$

Uniform contraction principle

Predictor-corrector algorithm

- “tangent” vector  $\dot{x}$
- replace  $\bar{x}$  by  $\bar{x} + h\dot{x}$
- $h$  dependent estimates:  $P(r, h) < 0$



$$P(r, h) = (\varepsilon_1 + \varepsilon_3 h) - (1 - \varepsilon_2)r + O(r^2, rh, h^2)$$

- $\varepsilon_1$  small due to choice of  $\bar{x}$
- $\varepsilon_2$  small due to choice of  $A$
- $\varepsilon_3$  small due to choice of  $\dot{x}$



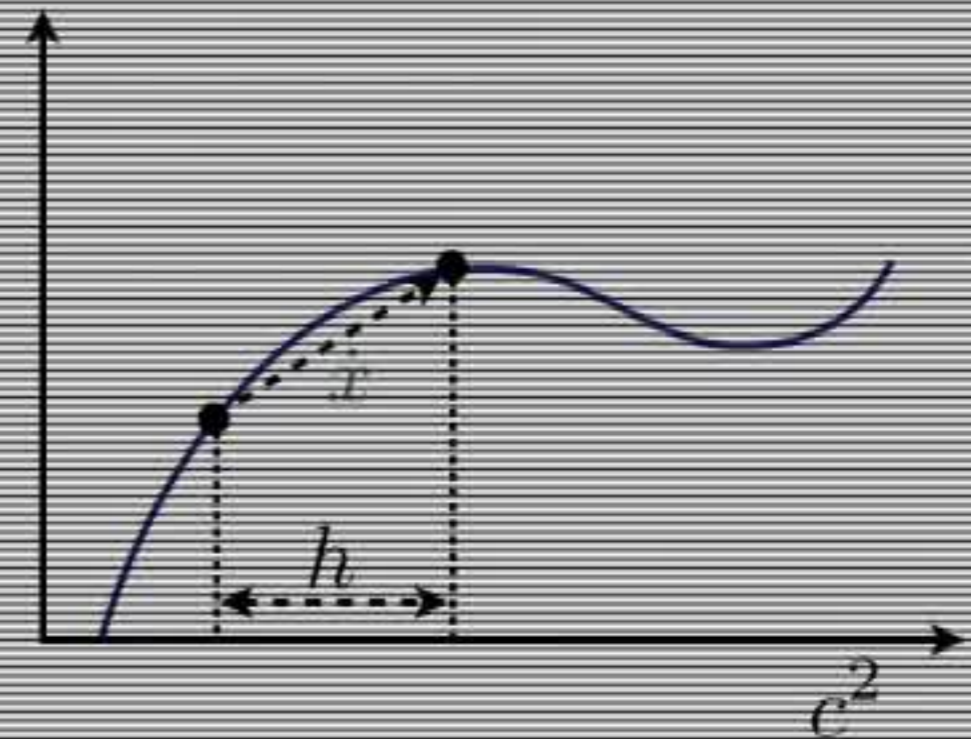
# Continuation

Continuation parameter  $\epsilon^2$

Uniform contraction principle

Predictor-corrector algorithm

- “tangent” vector  $\dot{\bar{x}}$
- replace  $\bar{x}$  by  $\bar{x} + h\dot{\bar{x}}$
- $h$  dependent estimates:  $P(r, h) < 0$



$$P(r, h) = (\epsilon_1 + \epsilon_3 h) - (1 - \epsilon_2)r + O(r^2, rh, h^2)$$

- $\epsilon_1$  small due to choice of  $\bar{x}$
- $\epsilon_2$  small due to choice of  $A$
- $\epsilon_3$  small due to choice of  $\dot{\bar{x}}$

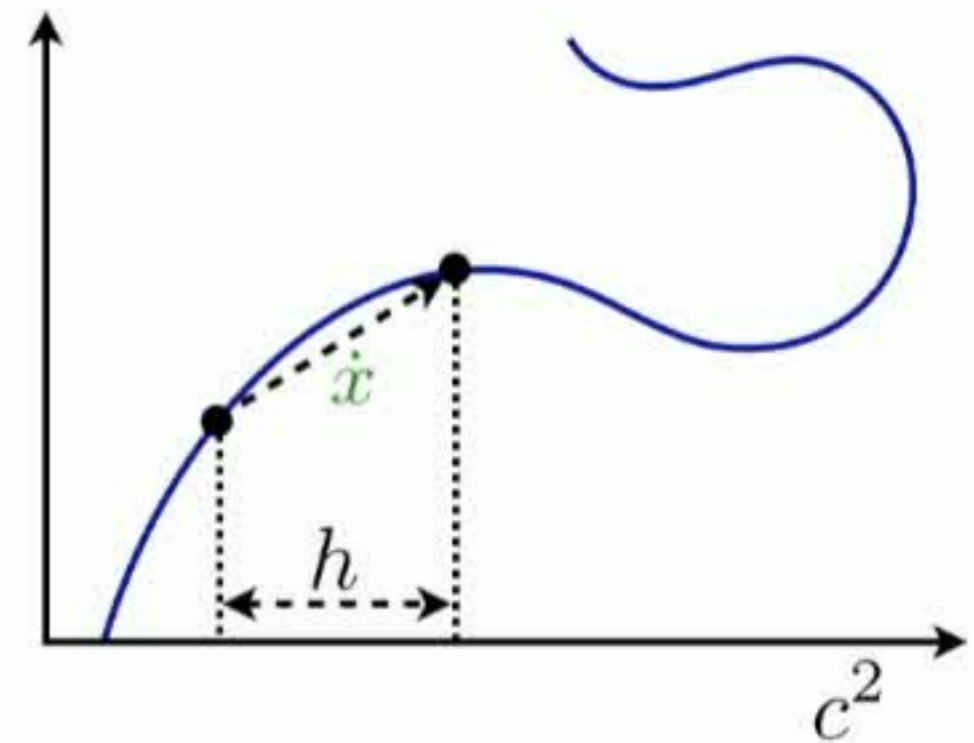
# Continuation

Continuation parameter  $c^2$

Uniform contraction principle

Predictor-corrector algorithm

- “tangent” vector  $\dot{x}$
- replace  $\bar{x}$  by  $\bar{x} + h\dot{x}$
- $h$  dependent estimates:  $P(r, h) < 0$



$$P(r, h) = (\varepsilon_1 + \varepsilon_3 h) - (1 - \varepsilon_2)r + O(r^2, rh, h^2)$$

- $\varepsilon_1$  small due to choice of  $\bar{x}$
- $\varepsilon_2$  small due to choice of  $A$
- $\varepsilon_3$  small due to choice of  $\dot{x}$



# Related progress & future work

- domain decomposition
- continuation of (un)stable manifolds through resonances (double eigenvalues)
- non-autonomous problems
- non-hyperbolic equilibria (center-stable manifolds)
- software for general connecting orbits (and continuation)
- (in)stability
- infinite dimensional problems (PDEs)

# Related progress & future work

- domain decomposition
- continuation of (un)stable manifolds through resonances (double eigenvalues)
- non-autonomous problems
- non-hyperbolic equilibria (center stable manifolds)
- software for general connecting orbits (and continuation)
- (in)stability
- infinite dimensional problems (PDEs)

# Thank you

Supported by  **NWO**  
Netherlands Organisation for Scientific Research



JB van den Berg  
 **VU Amsterdam**