

The Role of Nurses in Immediate Postpartum LARC Implementation



ACOG

The American College of
Obstetricians and Gynecologists



ACOG disclaimer

This information is designed as an educational resource to aid clinicians in providing obstetric and gynecologic care, and use of this information is voluntary. This information should not be considered as inclusive of all proper treatments or methods of care or as a statement of the standard of care. It is not intended to substitute for the independent professional judgment of the treating clinician. Variations in practice may be warranted when, in the reasonable judgment of the treating clinician, such course of action is indicated by the condition of the patient, limitations of available resources, or advances in knowledge or technology. The American College of Obstetricians and Gynecologists reviews its publications regularly; however, its publications may not reflect the most recent evidence. Any updates to this document can be found on www.acog.org or by calling the ACOG Resource Center.

While ACOG makes every effort to present accurate and reliable information, this publication is provided "as is" without any warranty of accuracy, reliability, or otherwise, either express or implied. ACOG does not guarantee, warrant, or endorse the products or services of any firm, organization, or person. Neither ACOG nor its officers, directors, members, employees, or agents will be liable for any loss, damage, or claim with respect to any liabilities, including direct, special, indirect, or consequential damages, incurred in connection with this publication or reliance on the information presented.

© 2019 by the American College of Obstetricians and Gynecologists, 409 12th Street SW, PO Box 96920, Washington, DC 20090-6920. Individuals and groups providing patient care or clinical education in family planning have permission to copy all or any portion of this slide set for noncommercial, educational purposes, provided that no modifications are made and proper attribution is given.

Speaker disclosures

I am a Merck Nexplanon trainer and a UCSF Beyond the Pill trainer.

Topics covered in presentation

- Section 1: Unmet patient need for postpartum contraception**
- Section 2: Clinical considerations**
- Section 3: Importance of contraceptive counseling**
- Section 4: Intrauterine device (IUD) insertion techniques***
- Section 5: Follow up instructions**
- Section 6: Special considerations for nurses**
- Section 7: Resources for support**

* Note: The Food and Drug Administration requires all health care providers who perform implant insertions and removals receive training from the manufacturer. Therefore, the implant insertion process is not covered in this presentation.

Learning objectives

1. Understand the unmet contraceptive needs postpartum
2. Describe the efficacy and safety of LARC in the immediate postpartum period
3. Understand the importance of shared decision-making for contraceptive counseling
4. Review immediate post-placental IUD insertion techniques
5. Explain the role of nurses in IPP LARC provision and identify resources for support

UNMET PATIENT NEED

for Postpartum Contraception

The need for postpartum contraception

- The greatest risk of low birth weight and preterm birth occurs when the birth to conception interval is <6 months
- Data suggests a modest increase in risk of adverse outcomes associated with intervals of <18 months
- The optimal interval between delivery and subsequent pregnancy is 18 months to 5 years

©ACOG

Interpregnancy care. *Obstetric Care Consensus No. 8. American College of Obstetricians and Gynecologists. Obstet Gynecol* 2019;133:e51-72. Available at:

<https://oce.ovid.com/article/00006250-201901000-00051/HTML>

Optimizing postpartum care. Committee Opinion No. 736. American College of Obstetricians and Gynecologists. *Obstet Gynecol* 2018;131:e949-51. Available at:

https://journals.lww.com/greenjournal/Fulltext/2018/05000/ACOG_Committee_Opinion_No_736_Summary_.37.aspx.

Over-the-counter access to oral contraceptives. Committee Opinion No. 544. American College of Obstetricians and Gynecologists. *Obstet Gynecol* 2012;120:1527-31. Available at:

http://journals.lww.com/greenjournal/Abstract/2012/12000/Committee_Opinion_No_544_Over_the_Counter.46.aspx.



Challenges with initiating postpartum contraception

Patients may have difficulty returning for a postpartum visit because of:

- **Childcare obligations**
- **Unable to get off work**
- **Unstable housing**
- **No transportation**
- **Communication or language barrier**
- **Lack of insurance coverage or potential expiration of Medicaid eligibility**

Challenges with initiating postpartum contraception

- **As many as 40% of women do not return for the 6 week postpartum visit**
 - **Even lower in under-resourced areas, further contributing to health disparities**
- **Non-breastfeeding women can ovulate as early as 25 days postpartum**
 - **40% of women will ovulate by 6 weeks postpartum**
- **57% of women are sexually active by 6 weeks postpartum**

LARC can serve as a bridge method to tubal ligation

- At least 1/3 of women who want a postpartum tubal ligation will **not** have it done
- 47% of women discharged without having a desired postpartum tubal ligation will be pregnant within 1 year
- Issues preventing tubal ligation at the time of delivery:
 - Insurmountable systems barriers like lack of an operating room, physician availability, or incomplete consent forms
 - Insurance Issues
 - Medicaid coverage may end postpartum
 - Uninsured – cost of sterilization can be prohibitive
- Immediate postpartum LARC can serve as a bridge method for those unable to get a desired tubal ligation

What is LARC?

- LARC stands for long-acting reversible contraception
- 2 types of LARC: the intrauterine device and the contraceptive implant, which are the most effective reversible forms of contraception
- Advantages of LARC include:
 1. Methods do not require ongoing effort for long-term and effective use
 2. Rapid return to fertility after removal of the device
- Disadvantage: must be placed and removed by a trained clinician, which impacts patient autonomy

What is immediate postpartum LARC?

LARC methods are available to women in the hospital after a delivery before discharge

- **ACOG, CDC, WHO, and Cochrane Reviews all support immediate postpartum LARC as a safe and effective option**
- **Can be an ideal time to provide LARC methods for many women who want them**

Definitions: timing of LARC placement

1. Immediate postplacental – placement while still in the delivery room and, when possible, within 10 minutes of placental delivery
2. Immediate postpartum – placement during hospital admission for delivery
3. Postpartum – placement within 6 weeks of delivery
4. Interval placement – placement at any time during the menstrual cycle and not in relationship to the end of a pregnancy (or >6 weeks after delivery)

IPP LARC satisfaction & continuation rates

- Many women like and continue using their immediate postpartum LARC method
 - 74% of women who had an IUD placed immediately postpartum had their IUD in place at one year
 - 84% of women who had an implant placed immediately postpartum still had the implant at one year
- Elective discontinuation for IUDs and implants are similar with interval placement

IPP LARC can help meet patients' needs

- Safe
- Convenient
- Highly effective
- Reversible
- Forgettable
- High continuation rates

CLINICAL CONSIDERATIONS

of Immediate Postpartum Contraception

Birth control options



The Implant
(Nexplanon)



IUD
(Skyla)



IUD
(Mirena)



IUD
(ParaGard)

No
hormones



Sterilization,
for men and women



The Pill



The Patch



The Ring



The Shot
(Depo-Provera)



Withdrawal



Diaphragm



Fertility
Awareness



Condoms,
for men and women

Needed
for STI
protection

Use with
any other
method

BEDSIDER

We've got you covered

Bedsider.org

©ACOG

Method	Pregnancy Rate in 1 Year	Special Considerations
Sterilization (female & male)	0.5%, 0.15%	- Permanent
Etonogestrel (ENG) Implant	0.05%	
IUD: Copper	0.8%	
IUD: Levonorgestrel (LNG)	0.2%	

Method	Pregnancy Rate in 1 Year	Special Considerations
Sterilization (female & male)	0.5%, 0.15%	- Permanent
Etonogestrel (ENG) Implant	0.05%	- Must be placed and removed by trained clinician - Clinicians must attend manufacture training prior to placement
IUD: Copper	0.8%	
IUD: Levonorgestrel (LNG) ©ACOG	0.2%	

Method	Pregnancy Rate in 1 Year	Special Considerations
Sterilization (female & male)	0.5%, 0.15%	- Permanent
Etonogestrel (ENG) Implant	0.05%	- Must be placed and removed by trained clinician - Clinicians must attend manufacture training prior to placement
IUD: Copper	0.8%	- Must be placed and removed by trained clinician
IUD: Levonorgestrel (LNG) ©ACOG	0.2%	- Must be placed and removed by trained clinician

Method	Pregnancy Rate in 1 Year	Special Considerations
Injectable (Medroxyprogesterone acetate)	6%	- Must obtain injection every 3 months
Progestin-only pill (norethindrone)	9%	
Estrogen/progestin combined pill, patch or ring	9%	
Barrier Methods (condoms, diaphragm)	12-21%	

Method	Pregnancy Rate in 1 Year	Special Considerations
Injectable (Medroxyprogesterone acetate)	6%	- Must obtain injection every 3 months
Progestin-only pill (norethindrone)	9%	- Must take pill at same time every day with 3 hour late window
Estrogen/progestin combined pill, patch or ring	9%	
Barrier Methods (condoms, diaphragm)	12-21%	

Method	Pregnancy Rate in 1 Year	Special Considerations
Injectable (Medroxyprogesterone acetate)	6%	- Must obtain injection every 3 months
Progestin-only pill (norethindrone)	9%	- Must take pill at same time every day with 3 hour late window
Estrogen/progestin combined pill, patch or ring	9%	- Must take pill at the same time every day, change patch every week, or ring every month. - Estrogen containing methods are contraindicated with some medical conditions, including immediately post-partum
Barrier Methods (condoms, diaphragm)	12-21%	

Method	Pregnancy Rate in 1 Year	Special Considerations
Injectable (Medroxyprogesterone acetate)	6%	- Must obtain injection every 3 months
Progestin-only pill (norethindrone)	9%	- Must take pill at same time every day with 3 hour late window
Estrogen/progestin combined pill, patch or ring	9%	<ul style="list-style-type: none"> - Must take pill at the same time every day, change patch every week, or ring every month. - Estrogen containing methods are contraindicated with some medical conditions, including immediately post-partum
Barrier Methods (condoms, diaphragm)	12-21%	<ul style="list-style-type: none"> - Must use with every act of intercourse - Condoms are only method that prevent STI transmission

Method	Pregnancy Rate in 1 Year	Special Considerations
Lactational amenorrhea method (LAM)	2-8%	<ul style="list-style-type: none">- May be impractical for many women- Must breastfeed infant frequently & exclusively; be amenorrhoeic, and <6 months postpartum
Fertility awareness-based methods	24%	
Withdrawal	22%	

Method	Pregnancy Rate in 1 Year	Special Considerations
Lactational amenorrhea method (LAM)	2-8%	<ul style="list-style-type: none"> - May be impractical for many women - Must breastfeed infant frequently & exclusively; be amenorrhoeic, and <6 months postpartum
Fertility awareness-based methods	24%	<ul style="list-style-type: none"> - Continuation rates are low (47% at 1 year) - Requires active participation by a willing partner - Requires daily action(s) - Requires lead time to increase effectiveness
Withdrawal	22%	

Method	Pregnancy Rate in 1 Year	Special Considerations
Lactational amenorrhea method (LAM)	2-8%	<ul style="list-style-type: none"> - May be impractical for many women - Must breastfeed infant frequently & exclusively; be amenorrhoeic, and <6 months postpartum
Fertility awareness-based methods	24%	<ul style="list-style-type: none"> - Continuation rates are low (47% at 1 year) - Requires active participation by a willing partner - Requires daily action(s) - Requires lead time to increase effectiveness
Withdrawal	22%	<ul style="list-style-type: none"> - Continuation rates are low (46% at 1 year) - Requires active participation by a willing partner - Requires user involvement at each act of intercourse

Comparing LARC Methods

	ParaGard® CopperT 380A	Liletta®	Mirena®	Kyleena®	Skyla®	Nexplanon®
Hormone and Dose	Non-hormonal	52mg LNG (18.6 mcg/day)	52mg LNG (20 mcg/day)	19.5mg LNG (17.5 mcg/day)	13.5mg LNG (14 mcg/day)	68mg ENG (35-45 mcg/day)
Efficacy	> 99%					
FDA- Approved Duration of Use*	10 years	6 years	5 years		3 years	
Expected Bleeding Patterns	Typically heavier	Typically lighter – rates of amenorrhea associated with hormone dose				Typically lighter, often unpredictable

* Ongoing studies suggest high efficacy with extended use beyond FDA-approved durations

Levonorgestrel (LNG) IUD

- Mechanism of action:
 - Prevents fertilization by changing amount and viscosity of cervical mucus, making it impenetrable to sperm
- Does not disrupt pregnancy and is not an abortifacient
- Most women ovulate normally, but experience diminished menstrual bleeding because of the local effect of levonorgestrel on the endometrium
- 99.8% effective; the one-year typical use failure rate is 0.2 per 100 women

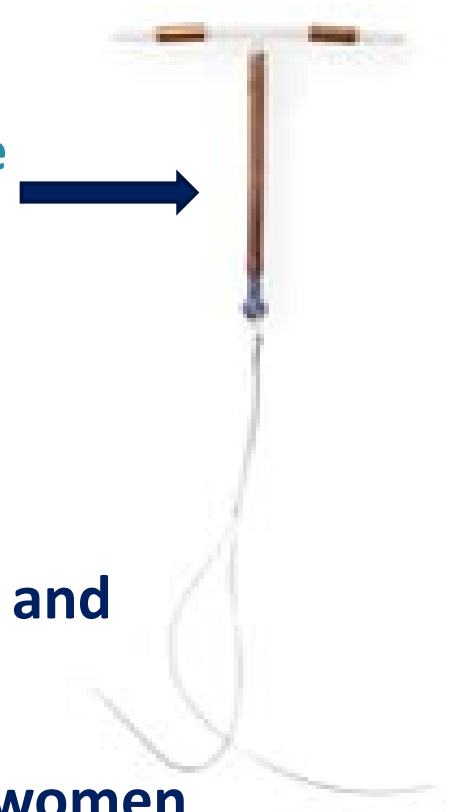


about the size
of a quarter

Copper IUD

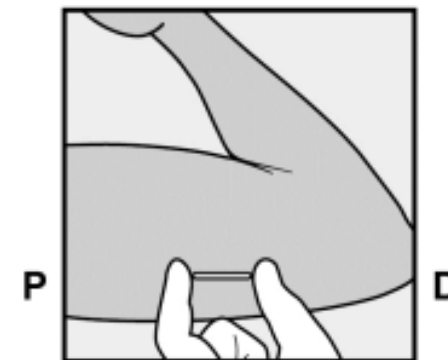
- Mechanism of action:
 - Inhibition of sperm migration and viability
- Contains no hormones
- Does not disrupt pregnancy and is not an abortifacient
- The most common adverse effects reported are abnormal bleeding and pain
- 99.2% effective; the one-year typical use failure rate is 0.8 per 100 women
- Most effective method of emergency contraception when inserted within 5 days of unprotected intercourse

about the size
of a quarter



Etonogestrel (ENG) implant

- Mechanism of action:
 - Primary: ovulation suppression
 - Additional: thickening of cervical mucus and alteration of the endometrial lining
- After implant insertion, changes in bleeding patterns are common and include amenorrhea or infrequent, frequent, or prolonged bleeding
- Placed subdermally in upper arm
 - Size: 4cm x 2mm (comparable in size to a match stick)
- 99.9% effective; the one-year typical use failure rate is 0.05 per 100 women



Troubleshooting Side Effects

- **Consider including these tips during counseling so patients can try them before an in-person appointment:**
 - **Copper IUD**
 - **To prevent heavy and painful menses: Take ibuprofen 400mg every 4 hours for 7 days starting Day 1 of menses for the first 3-6 cycles**
 - **LNG-IUD and ENG Implant**
 - **For unscheduled bleeding: Take naproxen 500mg every 12 hours for 5 days OR ibuprofen 800mg every 8 hours for 5 days**

ASSESSING CANDIDACY

for Immediate Postpartum LARC

ACOG guidance for postpartum LARC

Key Takeaway:

“ACOG supports immediate postpartum LARC insertion as a best practice, recognizing its role in preventing rapid repeat and unintended pregnancy.”

- ACOG Practice Bulletin #186, LARC: IUDs & Implants

IPP IUD contraindications Category 4 – ACOG & U.S. MEC

Routine Contraindications

- Active gynecologic malignancy
- Current breast cancer
- Current active purulent cervicitis, chlamydial/gonococcal infection, or PID*
- Gestational trophoblastic disease with persistent intrauterine disease or malignancy
- Pelvic tuberculosis
- Post-abortion or postpartum sepsis
- Uterine anomaly
- Unexplained vaginal bleeding

IPP Contraindications

- Uterine infection:
 - Peripartum chorioamnionitis
 - Endometritis
 - Puerperal sepsis
- Ongoing Postpartum hemorrhage

*STI testing should be done as indicated, but IUD insertion does not require testing & should not be delayed while awaiting test results.

Curtis KM, Tepper NK, Jatlaoui TC, Berry-Bibee E, Horton LG, Zapata LB, et al. U.S. Medical Eligibility Criteria for Contraceptive Use, 2016. MMWR Recomm Rep 2016;65(RR-3):1-103. Available at: https://www.cdc.gov/mmwr/volumes/65/rr/rr6503a1.htm?s_cid=rr6503a1_w.

Long-acting reversible contraception: implants and intrauterine devices. Practice Bulletin No. 186. American College of Obstetricians and Gynecologists. Obstet Gynecol 2017;130:e251-69. Available at: http://journals.lww.com/greenjournal/Fulltext/2017/11000/Practice_Bulletin_No_186_Long_Acting_Reversible.50.aspx.

IPP LARC & infection

Key Takeaway:

“IPP IUD placement is contraindicated in the setting of intrauterine infection at time of delivery, postpartum hemorrhage, and puerperal sepsis. In the absence of puerperal sepsis, IPP IUD insertion is not associated with increased risks of bleeding or infection.”

- ACOG Committee Opinion #670, Immediate Postpartum LARC

IUD EXPULSION

Clinical Considerations

IUD expulsion

- **Expulsion rates for immediate postpartum IUD insertions vary by:**
 - **Study**
 - **Device type**
 - **Route of delivery**
- **Expulsion rates:**
 - **Immediate postplacental: ~10%**
 - **10 minutes to 4 weeks: may be as high as 10-27%**
- **Continuation rates for IUDs and implants at 1 year are similar with interval placement**

Immediate postpartum long-acting reversible contraception. Committee Opinion No. 670. American College of Obstetricians and Gynecologists. *Obstet Gynecol* 2016;128:e32-7. Available at: <http://journals.lww.com/greenjournal/pages/results.aspx?txtkeywords=10.1097%2fAOG.0000000000001587>.

Jatlaoui TC, Whiteman MK, Jeng G, Tepper NK, Berry-Bibee E, Jamieson DJ, Marchbanks PA, Curtis KM. Intrauterine Device Expulsion After Postpartum Placement: A Systematic Review and Meta-analysis. *Obstet Gynecol* 2018;132(4):895-905. Available at https://journals.lww.com/greenjournal/Fulltext/2018/10000/Intrauterine_Device_Expulsion_After_Postpartum.14.aspx

Long-acting reversible contraception: implants and intrauterine devices. Practice Bulletin No. 186. American College of Obstetricians and Gynecologists. *Obstet Gynecol* 2017;130:e251-69. Available at: http://journals.lww.com/greenjournal/Fulltext/2017/11000/Practice_Bulletin_No_186_Long_Acting_Reversible.50.aspx.



IUD expulsion

- Counsel patients about increased risk of expulsion and signs and symptoms of expulsion
- A person who experiences or suspects expulsion should contact their health care provider and use a back-up contraceptive method

Immediate postpartum long-acting reversible contraception. Committee Opinion No. 670. American College of Obstetricians and Gynecologists. *Obstet Gynecol* 2016;128:e32-7. Available at: <http://journals.lww.com/greenjournal/pages/results.aspx?txtkeywords=10.1097%2fAOG.0000000000001587>.

Jatlaoui TC, Whiteman MK, Jeng G, Tepper NK, Berry-Bibee E, Jamieson DJ, Marchbanks PA, Curtis KM. Intrauterine Device Expulsion After Postpartum Placement: A Systematic Review and Meta-analysis. *Obstet Gynecol* 2018;132(4):895-905. Available at https://journals.lww.com/greenjournal/Fulltext/2018/10000/Intrauterine_Device_Expulsion_After_Postpartum.14.aspx

Long-acting reversible contraception: implants and intrauterine devices. Practice Bulletin No. 186. American College of Obstetricians and Gynecologists. *Obstet Gynecol* 2017;130:e251-69. Available at: http://journals.lww.com/greenjournal/Fulltext/2017/11000/Practice_Bulletin_No_186_Long_Acting_Reversible.50.aspx.

IUD expulsion

Key Takeaway:

Many women experience barriers to interval LARC placement, such that the advantages of immediate placement outweigh the disadvantages.

“The immediate postpartum period has several potential benefits for implant insertion or IUD placement because women are known not to be pregnant and many women are motivated to avoid short-interval pregnancy. Additionally, the woman and clinician are in the same place at the same time, which eliminates potential access barriers, including the need for an additional visit and potential loss of insurance coverage postpartum.”

- ACOG Committee Opinion #670, Immediate Postpartum LARC

BREASTFEEDING

Clinical Considerations

Breastfeeding

- The Copper IUD lacks hormones and is classified as CDC MEC Category 1 (no restriction on use) for people who are breastfeeding
- The LNG IUD and implant are category 2 for theoretical impact on lactation
- Several small randomized control trials (RCTs) have shown no significant differences in:
 - Breast milk quality or quantity
 - Infant size

Legend:	
1	No restriction (method can be used)
2	Advantages generally outweigh theoretical or proven risks
3	Theoretical or proven risks usually outweigh the advantages
4	Unacceptable health risk (method not to be used)

Breastfeeding

Key Takeaway:

“Given available evidence, women considering IPP hormonal LARC should be counseled about the theoretical risks of reduced duration of breastfeeding, but the preponderance of evidence has not shown a negative effect on actual breastfeeding outcomes”

- ACOG Practice Bulletin #186, LARC: IUDs & Implants

CONTRACEPTIVE COUNSELING

Shared Medical Decision-Making

Contraceptive coercion

- Contraceptive coercion is the act of pressuring or forcing an individual to use a method of birth control that they do not desire
- The U.S. has a long history of contraceptive coercion and forced sterilization perpetrated against economically marginalized individuals and persons of color.

Forced sterilization

- The Eugenics movement of the early 1900s
- Continued forced or coerced sterilization through 1970's of the economically marginalized, those with mental illnesses, persons of color, and immigrant individuals
 - Population control
 - Social control
 - Form of punishment
 - Extortion to ensure receipt of public assistance
 - Trainee education
- Recent cases in the 2000s in California prisons

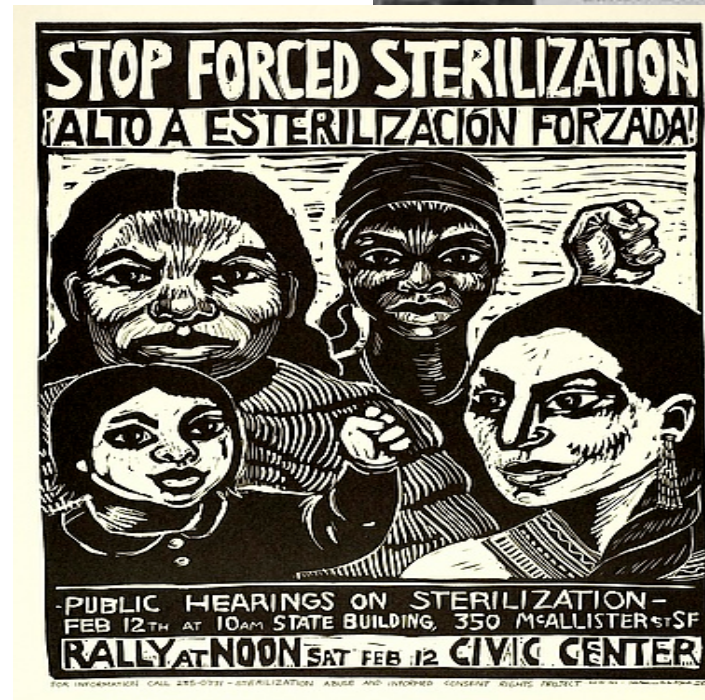
Slide content courtesy of Dr. Serina Floyd

©ACOG

the **LARC**
program
Long-Acting Reversible Contraception

Reproductive injustices

- Mississippi Appendectomy
- Indian Health Services
- La Operación
- Oral contraception clinical trials
- Norplant and Depo Provera



Slide content courtesy of Dr. Serina Floyd

©ACOG

the **LARC**
program
Long-Acting Reversible Contraception

Contraceptive counseling, especially on sterilization or LARC methods, must be sensitive to this history

Slide content courtesy of Dr. Serina Floyd

©ACOG

the **LARC**
program
Long-Acting Reversible Contraception

Reproductive justice

SisterSong defines reproductive justice as:

“The human right to maintain personal bodily autonomy, have children, not have children, and parent the children we have in safe and sustainable communities.”

- **SisterSong Women of Color Reproductive Justice Collective**

A reproductive justice framework for contraceptive counseling

Key Takeaway:

“The framework of reproductive justice connects family planning and other aspects of sexual and reproductive health with the disparities and complexities that affect patients’ lives. Furthermore, it encourages gynecologic health care providers to examine issues of bias and coercion and advocate for equitable access and change.”

- ACOG Committee Opinion #699, Adolescent Pregnancy, Contraception, and Sexual Activity

Provider bias

- **Explicit bias**: a bias that a person is aware of and believes is correct in some manner
- **Implicit bias**: a bias that is unintentional and unconscious but is activated quickly and unknowingly by situational factors
- Implicit association tests: <https://implicit.harvard.edu/implicit/>
- Consequences on patient-provider relationship include:
 - Rapid discontinuation of methods that client felt pressured to select
 - Delaying future healthcare access and contraceptive use due to previous negative encounters
 - Undermining trust and decreased receptiveness to contraceptive counseling

Slide courtesy of Dr. Serina Floyd

Shared medical decision making for contraceptive counseling

- When engaging in shared medical decision making:
 - Be aware of and address your own biases
 - Practice perspective-taking and individuation when caring for each person
 - Acknowledge historical racial injustices during counseling sessions
 - Strive for equitable outcomes for all people, especially for disadvantaged or marginalized groups.

Talking with patients about contraception

- Shared medical decision making is a process where both patients and clinicians share information, express treatment preferences, and agree on a treatment plan.
- It can increase patient engagement and reduce risk, resulting in improved outcomes, satisfaction, and treatment adherence
- Although medical knowledge is tipped towards the provider, in shared medical decision making a middle ground is sought that incorporates accurate medical information and a patient's personal preferences
- Person-centered goals may also have a part in the decision-making process

©ACOG

Effective patient–physician communication. Committee Opinion No. 587. American College of Obstetricians and Gynecologists. Obstet Gynecol 2014;123:389–93. Available at: <https://www.ncbi.nlm.nih.gov/pubmed/24451677>.

Partnering with patients to improve safety. Committee Opinion No. 490. American College of Obstetricians and Gynecologists. Obstet Gynecol 2011;117:1247–9. Available at: http://journals.lww.com/greenjournal/Citation/2011/05000/Committee_Opinion_No_490_Partnering_With.49.aspx.

the **LARC**
program
Long-Acting Reversible Contraception

5 components of shared medical decision making

1.

Focus on interpersonal relationship.

2.

Elicit patient preferences for methods.

3.

Be attuned to diverse patient preferences.

4.

Provide relevant information in accordance with patient preferences.

5.

Be aware of and responsive to patient preferences during counseling.

5 components of shared medical decision making

1. Focus on interpersonal relationship

Intimate, friend-like interactions establish trust and openness between providers and patients and are consistent with patient preferences for counseling about contraception.

- **Examples:**
 - “Hi ____! It’s nice to see you again. How’s everything been since we saw each other last?”
 - “How are you liking the implant you received last time?”

2. Elicit patient preferences for methods

Open the discussion of contraceptive method options with an open-ended question that provides a clear indication that the patients’ preferences are the focus of the discussion.

- **Examples:**
 - “What brings you to our office today?”
 - “What is important to you about your birth control method?”

5 components of shared medical decision making

3. Be attuned to diverse patient preferences

Patients will have varied preferences around issues including the relative importance of preventing pregnancy and the significance of specific side effects, including menstrual changes.

- Examples:
 - “It’s really important for me to continue having a monthly period, so it’s less obvious I’m using contraception.”
 - “I absolutely cannot gain any weight.”

4. Provide relevant information in accordance with patient preferences

Prioritize sharing information about methods based on what is most important to the patient, whether that is side effects, efficacy, mode of use, or other method characteristics.

- Examples:
 - “Since you said you want regular menses, you might consider oral contraceptive pills.”
 - “I hear you. The injectable contraceptive is the only method proven to cause weight gain, but every body reacts differently so we can work together to see which method works best for you.”

5 components of shared medical decision making

5. Be aware of and responsive to patient preferences during counseling

Either through direct questioning or by assessing her response to a shared decision making approach, understand and adjust counseling, and specifically the extent of provider guidance in the decision-making process according to how the patient would like decisions to be made.

- Examples:
 - “Do you want to use a method that you can easily start and stop on your own?”
 - “How do you feel about having to take a pill at the same time everyday? Does that fit into your daily life?”

Remember the goal! Be person-centered.

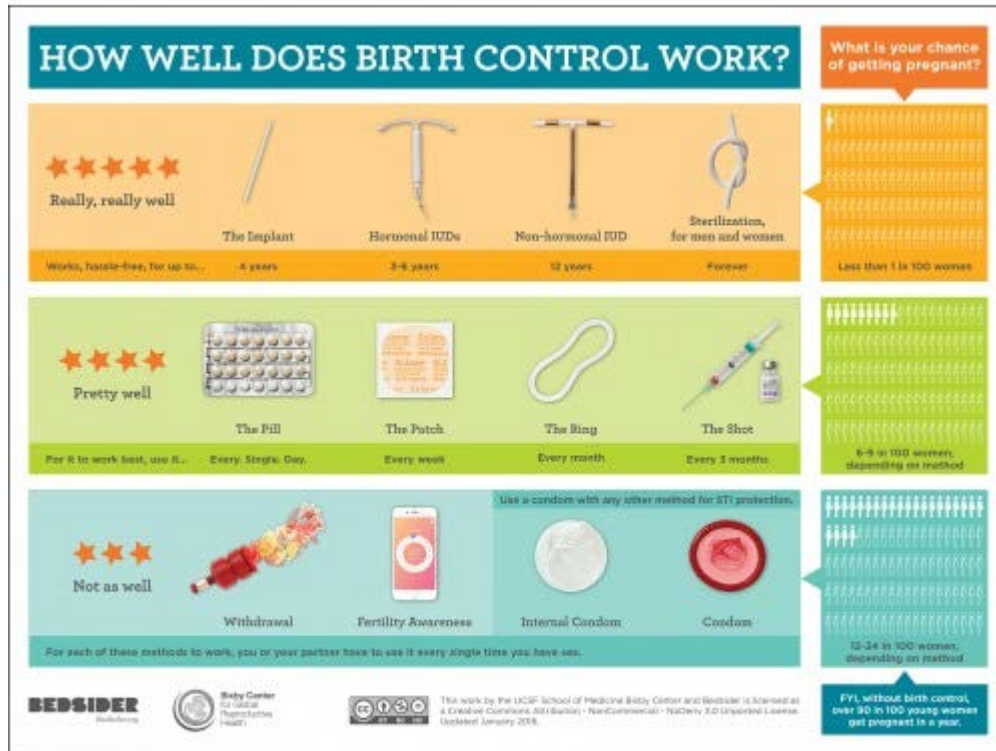
Talking with patients about LARC

- Highlight the reliance on a provider for insertion/removal
- Be mindful that LARC can cause a decreased sense of control or the feeling of being pressured into a contraceptive method
- Discuss options for low or no-cost removal services, including Title X or other clinics

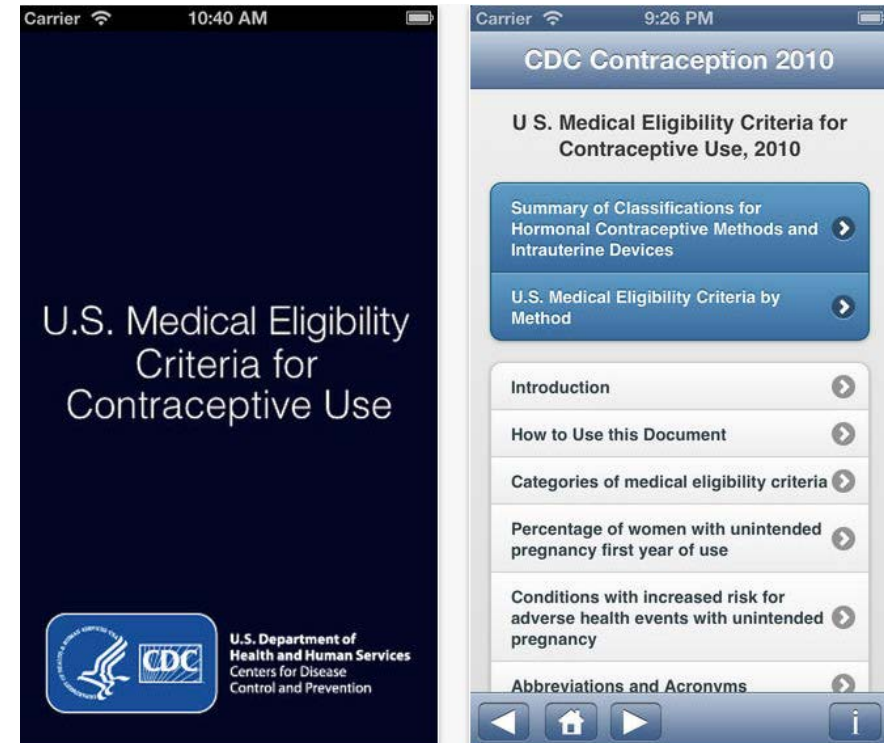
Immediate postpartum LARC counseling

- Optimally, patients should be counseled prenatally
- Counseling on immediate postpartum LARC should include:
 - All indicated forms of contraception
 - Advantages, contraindications, and alternatives
 - Increased risk of expulsion, including unrecognized expulsion of IUD
 - Convenience and effectiveness, as well as the benefits of reducing unintended pregnancy and lengthening interpregnancy intervals
 - A discussion on the theoretical risk of reduced duration of breastfeeding
 - Possibility of non-visualized strings and difficult removal
- More info & resources: [ACOG Postpartum Contraceptive Access Initiative Website](#)

Tools for contraceptive counseling



Bedsider.org



U.S. MEC phone app

Trauma-informed care

- Trauma-informed care is an approach that:
 - Uses a framework that acknowledges the effects of trauma
 - Recognizes signs and symptoms of trauma
 - Responds by integrating knowledge about trauma into practices
 - Seeks to resist re-traumatization
- **Acute trauma:** single traumatic event that causes extreme emotional or physical distress
- **Chronic trauma:** ongoing traumatic event, such as abuse or neglect over time, multiple experiences of single events, or chronic traumatic experiences such as mistreatment and discrimination affecting a person's sense of self in the world

Slide courtesy of Dr. Colleen McNicholas

Trauma-informed care

Key Takeaway:

“This [trauma-informed care] framework can help optimize the patient–provider relationship, improve health outcomes, and reduce long lasting burdens of trauma. ”

- ACOG Committee Opinion #777, Sexual Assault

IUD INSERTION

Immediately Postpartum

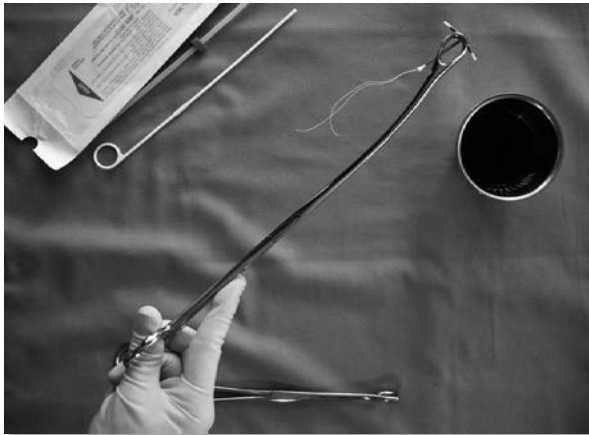
Post-placental IUD insertion equipment

- Two forceps
 - One for cervical traction and another for device placement
 - Kelly Placental forceps
 - Ring/Ovum forceps
- Method of vaginal retraction
- Scissors
- Light source
- IUD
- New sterile gloves
- Ultrasound recommended, not required
- +/- antiseptic cleanser and radiopaque surgical sponge



Two Insertion methods

1. Ring forceps



2. Manual/hand



No matter which method, the IUD should **ALWAYS** be placed at the fundus of the uterus for both vaginal & cesarean births

IPP IUD simulation video: ACOG District II



IUD removal

- Patients can have an IUD removed at any time upon request
- Prophylactic antibiotics are NOT needed for IUD removal
- Providers should be aware of changes to insurance coverage in the postpartum period that may affect coverage of device removal for patients
- Discuss with the patient:
 - When fertility could return
 - Contraceptive options if pregnancy is not desired
 - Mild uterine cramping and a small amount of bleeding is expected
 - Options for low or no-cost removal services, including Title X or other clinics

IUD removal

- Instruments needed: speculum, ring forceps (+/-: cytobrush and tenaculum)
- Removal technique: Once the cervix is visualized, grasp the strings with the ring forceps, and apply steady traction to remove the IUD
- Note: Ensure the IUD has been removed in its entirety
- More info & resources: [ACOG LARC Program's Video Series-IUD Removal](#)



Non-Visualized IUD strings

- **Potential causes:** string retraction (in cervix or uterus), IUD failure/pregnancy, IUD expulsion, perforation
- **Step 1:**
 - **Attempt to sweep strings retracted in the cervical canal into view with a cytobrush**
- **Step 2:**
 - **If strings remain unidentified, then the patient should undergo a pregnancy test, counseling regarding emergency contraception and backup method of contraception should be provided, and ultrasound imaging should be performed**
 - **If ultrasound demonstrates a correctly placed IUD: it may continue to be relied upon for contraception (if desired by patient) or it may be removed**
 - **If ultrasound does not locate the IUD: the patient should receive an abdominal X-ray to rule out expulsion and perforation**

IMPLANT INSERTION

Key Considerations

Contraceptive implant insertion

- The Food and Drug Administration requires that all health care providers who perform implant insertions and removals receive training from Merck, the manufacturer of Nexplanon®.
 - The insertion process is provided by Merck and not covered in this presentation
- To request a Nexplanon® training:
 1. Website: <http://www.nexplanon-usa.com/en/hcp/services-and-support/request-training/>
 2. Phone number: 1-877-467-5266

Implant follow up

- Immediate postpartum insertion of the contraceptive implant is identical to interval insertion and can be inserted any time after delivery
- Instruct patient to make a follow up appointment if:
 - Experiencing redness, swelling, or drainage near the implant insertion site
 - Unable feel the implant under their skin
- Bruising and soreness around the insertion site is normal and should resolve within 1-2 weeks
- Providers should be aware of changes to insurance coverage in the postpartum period that may affect coverage of device removal for patients
 - Discuss options for low or no-cost removal services, including Title X or other clinics

Implant removal

- Patients can have an implant removed at any time upon request
- Discuss with the patient:
 - When fertility could return
 - Contraceptive options if pregnancy is not desired
- If the implant is not palpable, pregnancy should be excluded and patients should be offered a method of backup contraception until the implant is located
- The removal process is included in the training required to be provided by Merck, the manufacturer of Nexplanon®, and is not covered in the presentation
- More info & resources: [ACOG LARC Program's Video Series-Implant Removal](#)

Postpartum IUD follow-up instructions

- All patients should be offered a string check (not mandatory)
- Instruct patient to notify a provider if they have:
 - Fevers, chills, severe abdominal pain, or temperature > 100.4°F
 - Heavy bleeding
 - Pain not controlled by over the counter medicine
 - Expulsion of the device
 - Pain or cramping different from lochia or postpartum cramps

Postpartum implant: follow-up instructions

- Immediate postpartum insertion of the contraceptive implant is identical to interval insertion and can be inserted any time after delivery
- Instruct patient to make a follow up appointment if:
 - Experiencing redness, swelling, or drainage near the implant insertion site
 - Unable feel the implant under their skin
- Bruising and soreness around the insertion site is normal and should resolve within 1-2 weeks
- Providers should be aware of changes to insurance coverage in the postpartum period and how that may affect coverage of device removal for patients
 - Discuss options for low or no-cost removal services, including Title X or other clinics

SPECIAL CONSIDERATIONS

For Nurses

Nurses play a key role

- Advocate and be a resource for your patients!
- Engage in patient education
 - Provide contraceptive counseling on ALL methods and answer questions
 - Hand out patient education materials and follow up instructions
 - Review where a patient can go to get the LARC device removed if needed
- Manage setup for device insertion
 - Confirm proper consent forms are completed, if applicable
 - Assist with device supply, stocking, and tracking per unit protocol
 - Setup tray with needed instruments, supplies, and the device (See slide 56 for full list)
 - Provide assistance during the insertion

Important things to keep in mind

- **Consent**

- Understand consent documentation process for your institution
- There is no mandatory waiting period for IPP LARC

- **Billing**

- The person doing this varies by institution – ensure the responsible person is doing this!

- **Stocking**

- Determine person responsible for supply, stocking, and tracking the devices
- Collaborate with Pharmacy, as needed

- **Documentation**

- Physicians and nurses may need to document placement, including:
 - Device lot number and expiration date
 - Right or left arm, if applicable

You are crucial to success!

- We cannot be successful without your help! Offering IPP LARC requires a team approach
- You are at the bedside often – patients trust you and listen to what you say
- You are crucial to help patients understand their contraceptive options
- Research shows that women want their options to be presented to them, not to be told what birth control to choose (*The Bedsider fliers are a great resource)
- Even though LARC is highly effective, it's not the right choice for everyone

REMEMBER:

Our goal is for patients to make an informed decision that is best for them!

KEY TAKEAWAYS & RESOURCES

Things to Keep in Mind

Summary of ACOG recommendations

1. Contraceptive counseling should use shared medical decision-making and include all contraceptive options
2. Contraceptive counseling should include benefits and limitations of all methods
3. LARC methods have few contraindications and almost all women are eligible for implants and IUDs
4. The immediate postpartum period can be particularly favorable time for IUD or implant insertion
5. Immediate postpartum IUD placement is cost-effective despite higher expulsion rates and concerns related to expulsion and breastfeeding should be discussed
5. Providers should be aware of changes to insurance coverage in the postpartum period and how that may affect coverage of device removal for patients
6. Discuss options for low or no-cost removal services for LARC

The ACOG LARC Program can help!

- Email us: pcai@acog.org
- Find more resources online:
 - <https://pcainitiative.acog.org>
 - <https://www.acog.org/programs/long-acting-reversible-contraception-larc>
- Send us your LARC-related questions:
 - www.acoglarc.freshdesk.com
 - The LARC Program Help Desk is a free service open to all, ACOG members and non-members alike
 - All questions will be responded to within 10 business days.

ACOG guidance on contraceptive counseling

ACOG has many contraceptive counseling resources, including, but not limited to:

1. [ACOG Practice Bulletin #186, LARC: Implants and Intrauterine Devices](#)
2. [ACOG Committee Opinion #672, Clinical Challenges of LARC Methods](#)
3. [ACOG Committee Opinion #670, Immediate Postpartum LARC](#)
4. [ACOG Committee Opinion #699, Adolescent Pregnancy, Contraception, and Sexual Activity](#)
5. [ACOG Committee Opinion #490, Partnering With Patients to Improve Safety](#)
6. [ACOG Committee Opinion #587, Effective Patient-Physician Communication](#)
7. [ACOG Committee Opinion #736, Optimizing Postpartum Care](#)
8. [Obstetric Care Consensus #8: Interpregnancy Care](#)

References

- Access to postpartum sterilization. Committee Opinion No. 530. American College of Obstetricians and Gynecologists. Obstet Gynecol 2012;120:212-5. Available at: http://journals.lww.com/greenjournal/Citation/2012/07000/Committee_Opinion_No_530_Access_to_Postpartum.43.aspx. Retrieved September 26, 2017.
DOI: 10.1097/AOG.0b013e318262e354 [doi].
PMID: 22914423.
- ACQUIRE Project, EngenderHealth. The postpartum intrauterine device: trainer's manual. New York (NY): EngenderHealth; 2008. Available at: https://www.engenderhealth.org/files/pubs/family-planning/PPIUD_Trainers-Manual.pdf. Retrieved September 21, 2017.
- ACQUIRE Project, EngenderHealth. The postpartum intrauterine device: participant handbook. New York (NY): ACQUIRE Project; 2008. Available at: https://www.engenderhealth.org/files/pubs/family-planning/PPIUD_Participant-Handbook.pdf. Retrieved October 3, 2017.
- Adolescent pregnancy, contraception, and sexual activity. Committee Opinion No. 699. American College of Obstetricians and Gynecologists. Obstet Gynecol 2017;129:e142-9. Available at: http://journals.lww.com/greenjournal/fulltext/2017/05000/Committee_Opinion_No_699_Adolescent_Pregnancy.49.aspx. Retrieved September 21, 2017.
DOI: 10.1097/AOG.0000000000002045 [doi].
PMID: 28426620.
- Aiken AR, Aiken CE, Trussell J, Guthrie KA. Immediate postpartum provision of highly effective reversible contraception. BJOG 2015;122:1050-1. Available at: <http://onlinelibrary.wiley.com/doi/10.1111/1471-0528.13306/abstract>. Retrieved September 13, 2017.
DOI: 10.1111/1471-0528.13306 [doi].
PMID: 25626730.
- American College of Obstetricians and Gynecologists. Contraceptive counseling resource digest. Washington, DC: American College of Obstetricians and Gynecologists; 2017. Available at: <https://www.acog.org/-/media/Departments/LARC/ContraceptiveCounselingReplaceable.pdf>. Retrieved September 21, 2017.
- American Congress of Obstetricians and Gynecologists, District II. Immediate post-placental IUD insertion. ACOG: Albany (NY); 2016. Available at: https://cfweb.acog.org/district_ii/larc/section4.html. Retrieved September 21, 2017.
- Bixby Center for Global Reproductive Health, University of California San Francisco. How well does birth control work? San Francisco (CA): UCSF; 2017. Available at: http://beyondthepill.ucsf.edu/sites/beyondthepill.ucsf.edu/files/Tiers_Chart_ENGLISH.pdf. Retrieved September 22, 2017.
- Bryant AS, Haas JS, McElrath TF, McCormick MC. Predictors of compliance with the postpartum visit among women living in healthy start project areas. Matern Child Health J 2006;10:511-6. Available at: <https://link.springer.com/article/10.1007/s10995-006-0128-5>. Retrieved September 13, 2017.
DOI: 10.1007/s10995-006-0128-5 [doi].
PMID: 16807794.
- Centers for Disease Control and Prevention. Unintended pregnancy prevention. Atlanta (GA): CDC; 2015. Available at: <https://www.cdc.gov/reproductivehealth/unintendedpregnancy>. Retrieved September 21, 2017.
- Clinical challenges of long-acting reversible contraceptive methods. Committee Opinion No. 672. American College of Obstetricians and Gynecologists. Obstet Gynecol 2016;128:e69-77. Available at: http://journals.lww.com/greenjournal/fulltext/2016/09000/Committee_Opinion_No_672_Clinical_Challenges_of.54.aspx. Retrieved September 22, 2017.
DOI: 10.1097/AOG.0000000000001644 [doi].
PMID: 27548557.
- Cohen R, Sheeder J, Arango N, Teal SB, Tocce K. Twelve-month contraceptive continuation and repeat pregnancy among young mothers choosing postdelivery contraceptive implants or postplacental intrauterine devices. Contraception 2016;93:178-83. Available at: [http://www.contraceptionjournal.org/article/S0010-7824\(15\)30030-5/fulltext](http://www.contraceptionjournal.org/article/S0010-7824(15)30030-5/fulltext). Retrieved September 13, 2017.
DOI: 10.1016/j.contraception.2015.10.001 [doi].
PMID: 26475368.

References

Connolly A, Thorp J, Pahel L. Effects of pregnancy and childbirth on postpartum sexual function: a longitudinal prospective study. *Int Urogynecol J Pelvic Floor Dysfunct* 2005;16:263-7. Available at: <https://link.springer.com/article/10.1007/s00192-005-1293-6>. Retrieved September 13, 2017.

DOI: 10.1007/s00192-005-1293-6 [doi].

PMID: 15838587.

Crockett AH, Pickell LB, Heberlein EC, Billings DL, Mills B. Six- and twelve-month documented removal rates among women electing postpartum inpatient compared to delayed or interval contraceptive implant insertions after Medicaid payment reform. *Contraception* 2017;95:71-6. Available at: [http://www.contraceptionjournal.org/article/S0010-7824\(16\)30145-7/fulltext](http://www.contraceptionjournal.org/article/S0010-7824(16)30145-7/fulltext). Retrieved September 13, 2017.

DOI: S0010-7824(16)30145-7 [pii].

PMID: 27400823.

Curtis KM, Tepper NK, Jatlaoui TC, Berry-Bibee E, Horton LG, Zapata LB, et al. U.S. medical eligibility criteria for contraceptive use, 2016. *MMWR Recomm Rep* 2016;65(RR-3):1-103. Available at: https://www.cdc.gov/mmwr/volumes/65/rr/rr6503a1.htm?s_cid=rr6503a1_w. Retrieved September 13, 2017.

DOI: 10.15585/mmwr.rr6503a1 [doi].

PMID: 27467196.

Dahlke JD, Terpstra ER, Ramseyer AM, Busch JM, Rieg T, Magann EF. Postpartum insertion of levonorgestrel--intrauterine system at three time periods: a prospective randomized pilot study. *Contraception* 2011;84:244-8. Available at: [http://www.contraceptionjournal.org/article/S0010-7824\(11\)00008-4/fulltext](http://www.contraceptionjournal.org/article/S0010-7824(11)00008-4/fulltext). Retrieved September 13, 2017.

DOI: 10.1016/j.contraception.2011.01.007 [doi].

PMID: 21843688.

Dehlendorf C, Levy K, Kelley A, Grumbach K, Steinauer J. Women's preferences for contraceptive counseling and decision making. *Contraception* 2013;88:250-6. Available at: [http://www.contraceptionjournal.org/article/S0010-7824\(12\)00901-8/fulltext](http://www.contraceptionjournal.org/article/S0010-7824(12)00901-8/fulltext). Retrieved September 21, 2017.

DOI: 10.1016/j.contraception.2012.10.012 [doi].

PMID: 23177265.

Effective patient-physician communication. Committee Opinion No. 587. American College of Obstetricians and Gynecologists. *Obstet Gynecol* 2014;123:389-93. Available at: http://journals.lww.com/greenjournal/fulltext/2014/02000/Committee_Opinion_No_587_Effective.36.aspx. Retrieved October 3, 2017.

DOI: 10.1097/01.AOG.0000443279.14017.12 [doi].

PMID: 24451677.

Finer LB, Zolna MR. Declines in unintended pregnancy in the United States, 2008-2011. *N Engl J Med* 2016;374:843-52. Available at: <http://www.nejm.org/doi/full/10.1056/NEJMsa1506575>. Retrieved September 21, 2017.

DOI: 10.1056/NEJMsa1506575 [doi].

PMID: 26962904.

Gray RH, Campbell OM, Zacur HA, Labbok MH, MacRae SL. Postpartum return of ovarian activity in nonbreastfeeding women monitored by urinary assays. *J Clin Endocrinol Metab* 1987;64:645-50. Available at: <https://academic.oup.com/jcem/article-abstract/64/4/645/2653643/Postpartum-Return-of-Ovarian-Activity-in?redirectedFrom=fulltext>. Retrieved September 26, 2017.

DOI: 10.1210/jcem-64-4-645 [doi].

PMID: 3818896.

References

Guttmacher Institute. Unintended pregnancy in the United States. New York (NY): Guttmacher Institute; 2016. Available at: <https://www.guttmacher.org/fact-sheet/unintended-pregnancy-united-states>. Retrieved September 21, 2017.

Hatcher RA, Trussell J, Nelson AL, Cates WJ, Kowal D, Policar MS. Contraceptive technology. 20th rev. ed. New York (NY): Ardent Media; 2011.

Immediate postpartum long-acting reversible contraception. Committee Opinion No. 670. American College of Obstetricians and Gynecologists. Obstet Gynecol 2016;128:e32-7. Available at: <http://journals.lww.com/greenjournal/pages/results.aspx?txtkeywords=10.1097%2fAOG.0000000000001587>. Retrieved September 13, 2017.

DOI: 10.1097/AOG.0000000000001587 [doi].

PMID: 27454734.

Kapp N, Curtis K, Nanda K. Progestogen-only contraceptive use among breastfeeding women: a systematic review. Contraception 2010;82:17-37. Available at:

[http://www.contraceptionjournal.org/article/S0010-7824\(10\)00046-6/fulltext](http://www.contraceptionjournal.org/article/S0010-7824(10)00046-6/fulltext). Retrieved September 13, 2017.

DOI: 10.1016/j.contraception.2010.02.002 [doi].

PMID: 20682140.

Kyleena (levonorgestrel-releasing intrauterine system). Highlights of prescribing information. Whippany (NJ): Bayer HealthCare Pharmaceuticals Inc.; 2016. Available at:

http://labeling.bayerhealthcare.com/html/products/pi/Kyleena_PI.pdf. Retrieved August 23, 2017.

Laerdal Global Health. Mama-U: postpartum uterus trainer. Available at: https://www.youtube.com/watch?v=xNIKUL5v_0. Retrieved September 26, 2017.

Levi EE, Stuart GS, Zerden ML, Garrett JM, Bryant AG. Intrauterine device placement during cesarean delivery and continued use 6 months postpartum: a randomized controlled trial.

Obstet Gynecol 2015;126:5-11. Available at: http://journals.lww.com/greenjournal/fulltext/2015/07000/Intrauterine_Device_Placement_During_Cesarean.3.aspx. Retrieved September 13, 2017.

DOI: 10.1097/AOG.0000000000000882 [doi].

PMID: 26241250.

Liletta (levonorgestrel-releasing intrauterine system). Highlights of prescribing information. Irvine (CA): Allergan USA, Inc.; 2017. Available at:

https://www.allergan.com/assets/pdf/lilettashi_pi. Retrieved August 23, 2017.

Long-acting reversible contraception: implants and intrauterine devices. Practice Bulletin No. 186. American College of Obstetricians and Gynecologists. Obstet Gynecol 2017;130:e251-69.

Available at: http://journals.lww.com/greenjournal/Fulltext/2017/11000/Practice_Bulletin_No_186_Long_Acting_Reversible.50.aspx. Retrieved October 25, 2017.

DOI: 10.1097/AOG.0000000000002400 [doi].

PMID: 29064972.

Lopez LM, Bernholz A, Hubacher D, Stuart G, Van Vliet HA. Immediate postpartum insertion of intrauterine device for contraception. Cochrane Database of Systematic Reviews 2015, Issue 6. Art. No.: CD003036. DOI: 10.1002/14651858.CD003036.pub3. Available at: <http://onlinelibrary.wiley.com/doi/10.1002/14651858.CD003036.pub3/abstract>. Retrieved October 3, 2017.

DOI: 10.1002/14651858.CD003036.pub3.

McNicholas C, Swor E, Wan L, Peipert JF. Prolonged use of the etonogestrel implant and levonorgestrel intrauterine device: 2 years beyond Food and Drug Administration-approved duration. Am J Obstet Gynecol 2017;216:586.e1-6. Available at: [http://www.ajog.org/article/S0002-9378\(17\)30171-0/fulltext](http://www.ajog.org/article/S0002-9378(17)30171-0/fulltext). Retrieved September 21, 2017.

DOI: S0002-9378(17)30171-0 [pii].

PMID: 28147241.

Merck & Co., Inc. Nexplanon (etonogestrel implant) 68 mg radiopaque: request training. Whitehouse Station (NJ): Merck; 2015. Available at: <http://www.nexplanon-usa.com/en/hcp/services-and-support/request-training/>. Retrieved September 21, 2017.

Mirena (levonorgestrel-releasing intrauterine system). Highlights of prescribing information. Whippany (NJ): Bayer HealthCare Pharmaceuticals Inc.; 2017. Available at:

https://labeling.bayerhealthcare.com/html/products/pi/Mirena_PI.pdf. Retrieved August 23, 2017.

References

- New York City Department of Health and Mental Hygiene. Breastfeeding and birth control. New York (NY): DOHMH; 2016. Available at: <https://www1.nyc.gov/assets/doh/downloads/pdf/ms/breastfeeding-birth-control-postpartum-poster.pdf>. Retrieved September 21, 2017.
- Nexplanon (etonogestrel implant). Highlights of prescribing information. Whitehouse Station (NJ): Merck & Co., Inc.; 2017. Available at: http://www.merck.com/product/usa/pi_circulars/n/nexplanon/nexplanon_pi.pdf. Retrieved August 23, 2017.
- Optimizing postpartum care. Committee Opinion No. 736. American College of Obstetricians and Gynecologists. Obstet Gynecol 2018;131:e949-51. Available at: https://journals.lww.com/greenjournal/Fulltext/2018/05000/ACOG_Committee_Opinion_No_736_Summary_.37.aspx. Retrieved March 13, 2019.
DOI: 10.1097/AOG.0000000000001487 [doi].
PMID: 27214194.
- ParaGard T 380A intrauterine copper contraceptive. Prescribing information. North Wales (PA): Teva Women's Health, Inc.; 2014. Available at: <http://paragard.com/pdf/PARAGARD-PI.pdf>. Retrieved August 23, 2017.
- Partnering with patients to improve safety. Committee Opinion No. 490. American College of Obstetricians and Gynecologists. Obstet Gynecol 2011;117:1247-9. Available at: http://journals.lww.com/greenjournal/Citation/2011/05000/Committee_Opinion_No_490_Partnering_With.49.aspx. Retrieved September 21, 2017.
DOI: 10.1097/AOG.0b013e31821d7d60 [doi].
PMID: 21508784.
- Peipert JF, Zhao Q, Allsworth JE, Petrosky E, Madden T, Eisenberg D, et al. Continuation and satisfaction of reversible contraception. Obstet Gynecol 2011;117:1105-13. Available at: http://journals.lww.com/greenjournal/fulltext/2011/05000/Continuation_and_Satisfaction_of_Reversible.12.aspx. Retrieved September 21, 2017.
DOI: 10.1097/AOG.0b013e31821188ad [doi].
PMID: 21508749.
- Postpartum Birth Control. FAQ194. American College of Obstetricians and Gynecologists. 2016. Available at: <https://www.acog.org/Patients/FAQs/Postpartum-Birth-Control>. Retrieved October 25, 2017.
- Reilly PR. Eugenics and involuntary sterilization: 1907–2015. Ann Rev Genom Hum Genet 2015;16:351-68. Available at: <http://www.annualreviews.org/doi/abs/10.1146/annurev-genom-090314-024930>. Retrieved September 21, 2017.
DOI: <https://doi.org/10.1146/annurev-genom-090314-024930>.
- Rivera R, Jacobson I, Grimes D. The mechanism of action of hormonal contraceptives and intrauterine contraceptive devices. Am J Obstet Gynecol 1999;181:1263-9. Available at: [http://www.ajog.org/article/S0002-9378\(99\)70120-1/fulltext](http://www.ajog.org/article/S0002-9378(99)70120-1/fulltext). Retrieved September 13, 2017.
DOI: S0002-9378(99)70120-1 [pii].
PMID: 10561657.
- Rodriguez MI, Kaunitz AM. An evidence-based approach to postpartum use of depot medroxyprogesterone acetate in breastfeeding women. Contraception 2009;80:4-6. Available at: [http://www.contraceptionjournal.org/article/S0010-7824\(09\)00048-1/fulltext](http://www.contraceptionjournal.org/article/S0010-7824(09)00048-1/fulltext). Retrieved September 13, 2017.
DOI: 10.1016/j.contraception.2008.12.014 [doi].
PMID: 19501209.
- Shaamash AH, Sayed GH, Hussien MM, Shaaban MM. A comparative study of the levonorgestrel-releasing intrauterine system Mirena versus the Copper T380A intrauterine device during lactation: breast-feeding performance, infant growth and infant development. Contraception 2005;72:346-51. Available at: [http://www.contraceptionjournal.org/article/S0010-7824\(05\)00109-5/fulltext](http://www.contraceptionjournal.org/article/S0010-7824(05)00109-5/fulltext). Retrieved September 13, 2017.
DOI: S0010-7824(05)00109-5 [pii].
PMID: 16246660.

References

- Skyla (levonorgestrel-releasing intrauterine system). Highlights of Prescribing Information. Whippany (NJ): Bayer HealthCare Pharmaceuticals Inc.; 2017. Available at: http://labeling.bayerhealthcare.com/html/products/pi/Skyla_PI.pdf. Retrieved August 23, 2017.
- Sothornwit J, Werawatakul Y, Kaewrudee S, Lumbiganon P, Laopaiboon M. Immediate versus delayed postpartum insertion of contraceptive implant for contraception. Cochrane Database of Systematic Reviews 2017, Issue 4. Art. No.: CD011913. DOI: 10.1002/14651858.CD011913.pub2. Available at: <http://onlinelibrary.wiley.com/doi/10.1002/14651858.CD011913.pub2/abstract>. Retrieved October 2, 2017.
- DOI: 10.1002/14651858.CD011913.pub2.
- Sterilization for Women and Men. FAQ011. American College of Obstetricians and Gynecologists. 2015. Available at: <https://www.acog.org/Patients/FAQs/Sterilization-for-Women-and-Men>. Retrieved December 5, 2017.
- Stern AM. Sterilized in the name of public health: race, immigration, and reproductive control in modern California. Am J Public Health 2005;95:1128-38. Available at: <http://ajph.aphapublications.org/doi/abs/10.2105/AJPH.2004.041608>. Retrieved September 21, 2017.
- DOI: 95/7/1128 [pii].
- PMID: 15983269.
- Thiel de Bocanegra H, Chang R, Menz M, Howell M, Darney P. Postpartum contraception in publicly-funded programs and interpregnancy intervals. Obstet Gynecol 2013;122:296-303. Available at: http://journals.lww.com/greenjournal/fulltext/2013/08000/Postpartum_Contraception_in_Publicly_Funded.17.aspx. Retrieved September 13, 2017.
- DOI: 10.1097/AOG.0b013e3182991db6 [doi].
- PMID: 23969798.
- Thurman AR, Janecek T. One-year follow-up of women with unfulfilled postpartum sterilization requests. Obstet Gynecol 2010;116:1071-7. Available at: http://journals.lww.com/greenjournal/fulltext/2010/11000/One_Year_Follow_up_of_Women_With_Unfulfilled.12.aspx. Retrieved September 21, 2017.
- DOI: 10.1097/AOG.0b013e3181f73eaa [doi].
- PMID: 20966691.
- Trussell J. Contraceptive failure in the United States. Contraception 2011;83:397-404. Available at: [http://www.contraceptionjournal.org/article/S0010-7824\(11\)00049-7/fulltext](http://www.contraceptionjournal.org/article/S0010-7824(11)00049-7/fulltext). Retrieved September 13, 2017.
- DOI: 10.1016/j.contraception.2011.01.021 [doi].
- PMID: 21477680.
- Voedisch AJ, Blumenthal PD. Postpartum contraception: ways to avoid VTE. Contemp Ob/Gyn 2012;57(1):20-6, 28-9. Available at: <http://contemporaryobgyn.modernmedicine.com/contemporary-obgyn/news/modernmedicine/modern-medicine-feature-articles/postpartum-contraception-way?page=full>. Retrieved September 21, 2017.
- Whitaker AK, Chen BA, Borgatta L. Society of Family Planning guidelines: postplacental insertion of intrauterine devices. Contraception 2017; DOI: 10.1016/j.contraception.2017.09.014. Available at: [http://www.contraceptionjournal.org/article/S0010-7824\(17\)30473-0/fulltext](http://www.contraceptionjournal.org/article/S0010-7824(17)30473-0/fulltext). Retrieved October 16, 2017.
- DOI: 10.1016/j.contraception.2017.09.014
- PMID: 28987293.
- Whitaker AK, Endres LK, Mistretta SQ, Gilliam ML. Postplacental insertion of the levonorgestrel intrauterine device after cesarean delivery vs. delayed insertion: a randomized controlled trial. Contraception 2014;89:534-9. Available at: [http://www.contraceptionjournal.org/article/S0010-7824\(13\)00750-6/fulltext](http://www.contraceptionjournal.org/article/S0010-7824(13)00750-6/fulltext). Retrieved September 13, 2017.
- DOI: 10.1016/j.contraception.2013.12.007 [doi].
- PMID: 24457061.

References

White K, Teal SB, Potter JE. Contraception after delivery and short interpregnancy intervals among women in the United States. *Obstet Gynecol* 2015;125:1471-7. Available at: http://journals.lww.com/greenjournal/fulltext/2015/06000/Contraception_After_Delivery_and_Short.28.aspx. Retrieved September 21, 2017.

DOI: 10.1097/AOG.0000000000000841 [doi].

PMID: 26000519.

Woo I, Seifert S, Hendricks D, Jamshidi RM, Burke AE, Fox MC. Six-month and 1-year continuation rates following postpartum insertion of implants and intrauterine devices. *Contraception* 2015;92:532-5. Available at: [http://www.contraceptionjournal.org/article/S0010-7824\(15\)00582-X/fulltext](http://www.contraceptionjournal.org/article/S0010-7824(15)00582-X/fulltext). Retrieved September 13, 2017.

DOI: 10.1016/j.contraception.2015.09.007 [doi].

PMID: 26408376.

World Health Organization. Medical eligibility criteria for contraceptive use. 5th ed. Geneva: WHO; 2015. Available at:

http://www.who.int/reproductivehealth/publications/family_planning/MEC-5/en/. Retrieved September 27, 2017.

Zapata LB, Murtaza S, Whiteman MK, Jamieson DJ, Robbins CL, Marchbanks PA, et al. Contraceptive counseling and postpartum contraceptive use. *Am J Obstet Gynecol* 2015;212:171.e1-8. Available at: [http://www.ajog.org/article/S0002-9378\(14\)00808-4/fulltext](http://www.ajog.org/article/S0002-9378(14)00808-4/fulltext). Retrieved October 3, 2017.

DOI: 10.1016/j.ajog.2014.07.059 [doi].

PMID: 25093946.