



2020 Product Catalog

Table of Contents

DBK DRYMATIC II INFORMATION AND PRICING	Pg 2-6
BOOST BAR INFORMATION AND PRICING	Pg 7-11
BOOST BOX INFORMATION AND PRICING	Pg 12
WALL MATS INFORMATION	Pg 13-14
FLOOR MATS INFORMATION	Pg 15-16
PRICING	Pg 17-21
PRODUCT TRAINING AND IICRC CLASSES	Pg 22-23
XACTIMATE LINE ITEMS	Pg 24

Controlled Heat and Air Exchange

Drymatic II is the latest innovation in water damage restoration from DBK Group. DBK's patented drying technology is truly unique in the world of restoration.

Drymatic II is smaller, lighter and even more powerful than its predecessor; giving technicians greater control over the drying process. Nothing increases the diffusion rate of bound water within a structure faster than the controlled application of heat.

Drymatic II works in harmony with Drymatic Boost and Wall & Floor Systems to deliver the most efficient drying system on the market.

TECHNICAL DATA

Operating Voltage	120V 60Hz
Operating Power	1.4kW
Maximum Current	11.6A
Airflow Recirculation Mode	380cfm
Airflow Exhaust Mode	350cfm
Weight	66lbs
Construction	Rotomolded
Storage Temperature	-4 to +122°F
Size	37 x 25 x 14"
Noise (High Fan Speed)	56.4dB
Recommended Drying Area	Maximum 5,000 ft ³



Xactimate: WTRHTX @ \$325/day

Features:

- Tough rotomolded design
- Touch-screen user interface
- Stackable - reducing logistical costs
- Simple installation setup
- Airflow at 350 cfm
- Adaptive heater technology that saves power on the job



Patent No.: 9,015,960



Order today using product code FGPH064

Building Restoration

How it works...

Drymatic II uses a combination of controlled heat and air exchange to deliver optimum results in a wide range of water damage situations.

When switched on the machine initially goes into Exhaust Mode for a period of 1 hour, this flushes the affected area of stagnant wet air and replaces it with air taken from an unaffected area, which is then heated to raise the ambient temperature and reduce the %RH.

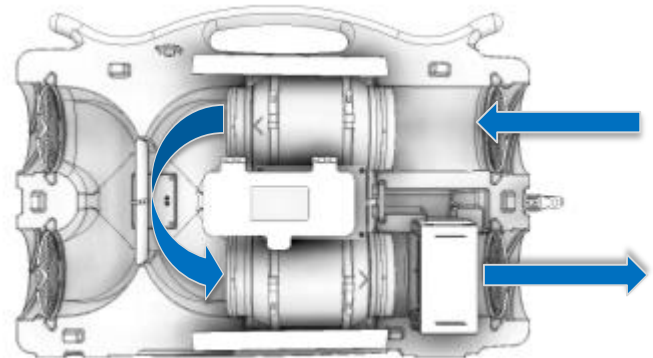
Recirculation Mode

The machine then switches into Recirculation mode for a maximum of 2 hours. During this mode of operation the machine stops exhausting to outside and continuously reheats the ambient air within the drying chamber. This process helps to maximize temperature gain within the affected area, speeding up the evaporation process.

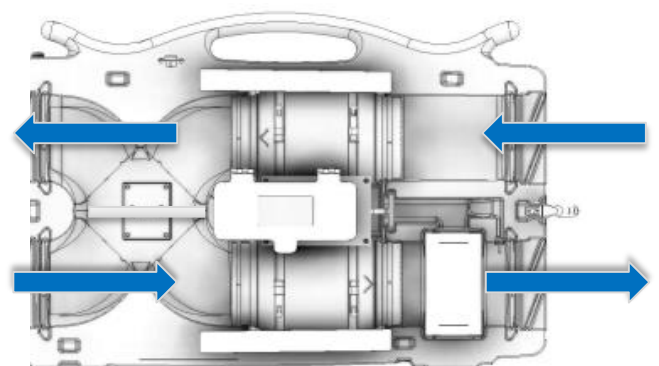
Exhaust Mode

When the Recirculation mode ends the machine switches into Exhaust mode. During this mode of operation the machine pulls in the wet air from the affected area and exhausts this to outside. At the same time, the machine brings in a source of unaffected air and adds heat to the airflow; this helps to maintain the temperature within the chamber.

Drymatic II will continually evaluate Room Temperature and %RH and automatically determine which mode of operation delivers the optimum drying performance.



Machine in Recirculation Mode



Machine in Exhaust Mode

Deliver your energy where it is needed most...

The Drymatic II Injection Kit gives you the ability to take heated airflow from the Drymatic II system and deliver it to your target via 7 x 1.5" outlets.

The machine can be fitted with two 7-port adaptors to create a push-pull drying system that ensures that you not only introduce warm dry air but also remove the wet air from the space that is being dried.

By manipulating the number of pipes fitted to the machine you can create Positive, Negative and Balanced drying installations:

The system is perfect for drying:

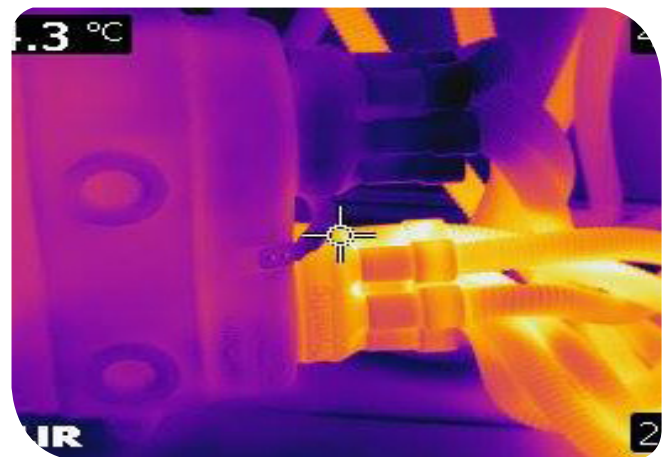
- Ceiling and Wall Cavities
- Kitchen Cabinetry
- Floor Voids



Features:

- Specifically designed for Drymatic II
- Rotomolded construction
- Supplied with a pipe kit for easy installation
- Minimally invasive drying tool that reduces strip-out and reinstatement work
- Supports Drymatic Boost Bar to remove wet air from cavity spaces.

PRODUCT INFORMATION



Order today using product code FGB344

Building Restoration

Drymatic II Y-Piece Kit

Extend the reach of your Drymatic II...

The Drymatic II Y-piece attachment is designed to extend the reach of your Drymatic II System.

The Y-Piece is designed to be connected to the Room Intake of the Drymatic II system which allows you to pull air from two separate areas of a water damaged structure.

Additionally, the Y-Piece attachment can be attached to the heater outlet to split your process air between two locations.

Perfect for:

- Drying multiple spaces within a building
- Cavity drying

The attachment is supplied in a bag that contains all of the relevant hoses and connections, making installation as simple as possible for the technician on site.

PRODUCT INFORMATION



Features:

- Specifically designed for Drymatic II
- Rotomolded construction
- Provides more control over ambient conditions by drawing air from multiple spaces.
- Evenly distributes the process air from the Drymatic II into two channels.



Order today using product code FGB343

Building Restoration

Making access to outside easier than ever...

The Drymatic II Reducer Kit gives you the ability to reduce your exhaust hose from 6" to 4" for easier access to the outside world.

The attachment locks into the Drymatic's Outside Exhaust outlet for quick and simple installation. The Reducer Kit is supplied with 20' of 4" PVC Flex Hose and this can then be run to exit points of a building such as:

- Kitchen and Bathroom Extraction Fans
- Clothes Dryer Vents
- Pet Doors
- Air Bricks and Vents

The 6" to 4" reducer can also be fitted to the Heater Outlet and Room Intake to enable target drying of smaller spaces.



Features:

- Tough rotomolded design
- Enables easy access to the outside world. Perfect for installations where building security is an increased concern.
- Specifically designed for Drymatic II
- Can also be use on the heater outlet and room intake ducts.

PRODUCT INFORMATION



Order today using product code FGB345

Building Restoration

Targeted Heat Drying At Its Finest

The Drymatic Boost Bar is one of the most advanced auxilliary heat systems on the market.

The Boost Bar is designed to give water damage professionals the ability to deliver temperature controlled air to a wide range of affected spaces quickly, efficiently and safely. The Boost Bar allows the user to select maximum temperature conditions, giving them full control over their drying installation.

The Boost Bar can be coupled with a Drymatic Wall or Floor System to enable direct target drying of wet materials or alternatively it can be connected to a range of Boost Bar Adaptors to enable cavity, ceiling void, crawlspace and under-cupboard drying.

TECHNICAL DATA

Operating Voltage	120V 60Hz (230V available)
Operating Power	1.4W @ 20°C (Varies with Airflow)
Maximum Current	11.6A
Dimensions	27 x 12 x 8"
Weight	17lbs
Construction	Rotomolded Housing
Storage Temperature	-4°F to +122°F
Operating Temperature	-14°F to 122°F
Maximum Air-Off Temperature	122°F



Xactimate: WTRHTAM + WTRDRY

Features:

- Lightweight and portable
- Uses ultra-safe DBK self-regulating PTC heating technology
- Digital temperature control
- Detects loss of air movement
- Saves energy, time and strip-out
- Flexible adaptor system
- Bluetooth enabled for future technologies



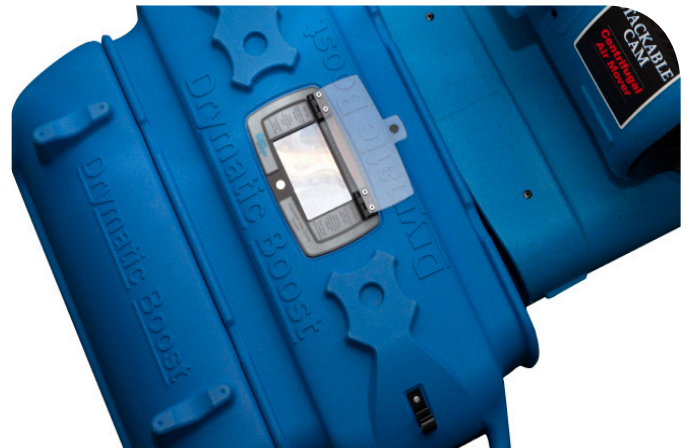
Order today using product code FGPH109

Direct your heat above or below

The Drymatic Boost Bar 90° Adaptor channels the heated airflow up towards ceiling level or it can be rotated to channel the airflow down in to a subfloor or crawlspace.

Simply slide the adaptor in to either side of the Drymatic Boost Bar and either allow the air to flow in the direction of choice or attach layflat ducting to the connector and take the air up into a ceiling void or a different area of the structure.

When drying crawlspace or subfloor areas the airflow can be channeled downwards into the drying chamber. Simply remove a section of the floor or subfloor and place the unit so that the air is channeled down through the opening.



Features:

- Specifically designed for Boost Bar
- Rotomolded construction
- Reversible system
- Designed to divert heated airflow down into a crawlspace or subfloor
- Allows attachment of layflat ducting
- Helps to keep warm, dry airflow away from sensitive flooring materials when required.

PRODUCT IMAGES



Order today using product code FGB342

Boost Bar 4-Port Adaptor Kit

Deliver your energy where it is needed most

The Drymatic Boost Bar 4-Port Adaptor gives you the ability to take heated airflow from the system and deliver it to four separate drying chambers.

When using the adaptor you do not have to place the Boost Bar in the drying chamber itself, just feed the 4 x 4" pipes from the unit to the drying chamber. Perfect for:

- Crawlspace drying
- Tented chambers
- Ceiling Voids
- Cavity Walls

The 4 Port Adaptor can be used with lengths of layflat tubing to improve airflow over longer distances. Distribute your heated airflow along an affected area by perforating your layflat and tying it off at the end!



Features:

- Specifically designed for Boost Bar
- Rotomolded construction
- Allows connection of pipes (supplied with product) or layflat ducting
- Allows Boost Bar to be placed outside of the drying chamber
- Perfect for ceiling voids, cavities, tented areas and crawlspaces
- Supplied in kit form

PRODUCT IMAGES



Order today using product code FGB341

Building Restoration

Creating a versatile cavity drying system

The Drymatic Boost Bar Injection Kit is the perfect tool for introducing temperature controlled, dry air in to hard to reach areas of water damage.

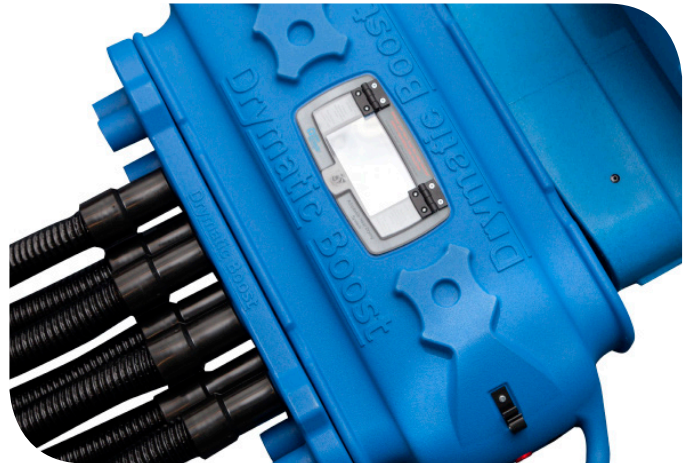
The system uses 12 x 1.5" pipes to deliver the heated air in to areas such as:

- Kitchen Cabinets
- Cavity Walls
- Ceiling Voids
- Crawlspace and Subfloors

The Injection Kit provides a minimally invasive way of restoring water damaged materials; saving time, effort and minimizing strip-out.

Supplied in kit form, the 12-Port Adaptor is supplied with 100' of Wireflex Pipe, 12 Plastic Cuffs and a roller bag.

PRODUCT INFORMATION



Features:

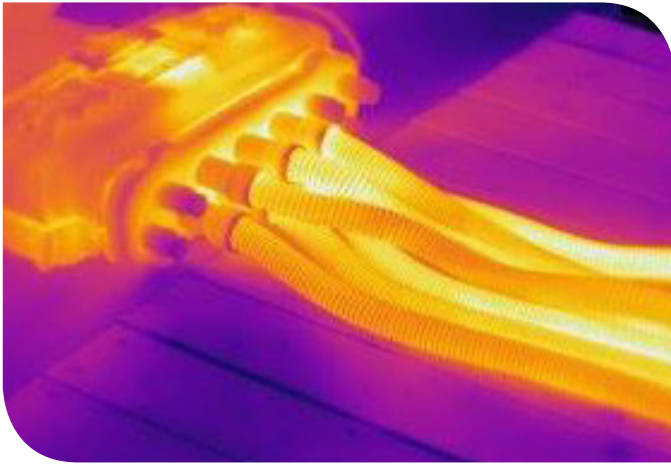
- Specifically designed for Boost Bar
- Rotomolded construction
- Can be used with layflat ducting or the pipe kit supplied with the unit
- Distributes the heated airflow delivered by the Boost Bar into multiple spaces.
- Minimises strip-out works
- Supplied in kit form



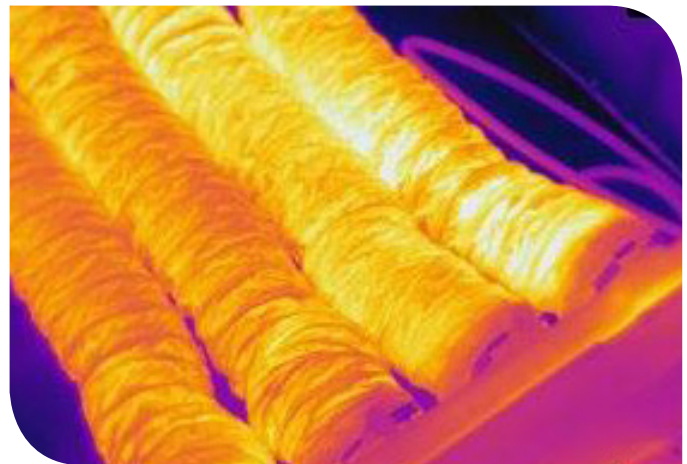
Order today using product code FGB340

Boost Bar In Use

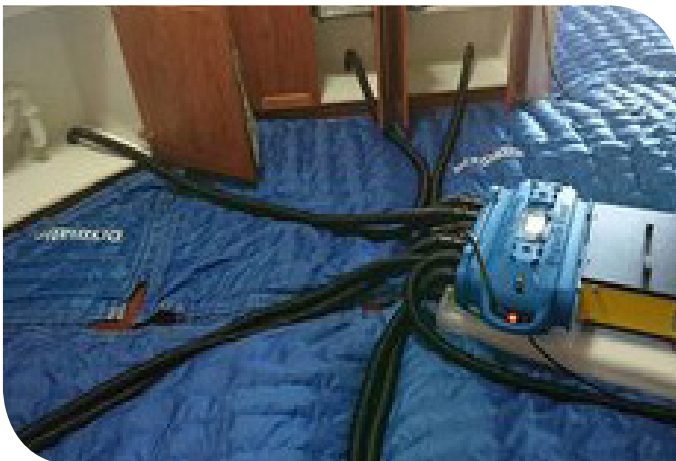
Injection Kit



4-Port Attachment Kit



Boost Bar and Mats



Building Restoration

Targeted Heat Drying

The DBK Drymatic Boost Box is one of the most advanced target heat systems on the market.

The Boost Box uses custom designed electronic control to effectively monitor the conditions of the air flowing through the system. The Boost Box allows the user to select maximum temperature conditions, giving them unrivalled control over their drying installation.

The Boost Box can be coupled with a Drymatic Wall or Floor System to create a target drying system that will reduce drying times, reduce costs and simplify your installations.



Xactimate: WTRHTAM + WTRDRY

Features:

- Lightweight and portable
- Unique Flat-Wire heating technology
- Three temperature limit settings
- Detects loss of air movement
- Automatically self-regulates power
- Saves energy, time and strip-out
- Plug in, switch on and go



TECHNICAL DATA

Operating Voltage	120V 60Hz
Operating Power	1.4kW
Maximum Current	11.6A
Dimensions	22 x 19 x 9.5"
Weight	19 lbs
Construction	Double Skinned VAC Form
Storage Temperature	-4 to +122°F
Temperature Limits	68-86°F 86-104°F 122-140°F
Recommended Minimum Airflow Required	700 cfm



Order today using product code FGPH052

Building Restoration

Targeted Heat Drying... At Its Finest

The DBK Drymatic Wall System is designed to efficiently control the heated airflow created by the DBK Drymatic Boost Box/Bar.

The patented system uses micro-jets of warm, dry air to break the boundary layer of moisture at the surface of a water damaged material. The controlled heat generated by the Boost Box/Bar is then driven into the structure, increasing the core temperature and increasing the diffusion rate of the bound water.

The DBK Drymatic Wall System, combined with the Boost, is the most effective target drying system on the market. The product is available in four sizes that can all be interconnected with the Drymatic Floor System to create a truly unique target drying system.



Features:

- Lightweight and portable
- Reduces waste to landfill
- Self-standing, requires no fixing to structure
- Reduces volume of air being Managed, maximising performance
- Washable and long-lasting
- Flame retardant material
- Roll out, connect and go!

TECHNICAL DATA

Available Sizes (W x H)	6' x 20" 6' x 3' 13' x 20" 13' X 3'
Fastening Method	High Strength Velcro
Joinable	Yes
Maximum Operating Temp	176°F
Washable	Jet Wash, Steam Clean or Machine Wash



Custom sizes are available on request
Please contact for more information

20" Wall System



3' Wall System



Boost and Mats



Targeted Heat Drying... At Its Finest

The DBK Drymatic Floor System is designed to efficiently control the heated airflow created by the DBK Drymatic Boost Box/Bar.

The patented system uses micro-jets of warm, dry air to break the boundary layer of moisture at the surface of a water damaged material. The controlled heat generated by the DBK Drymatic Boost Box/Bar is then driven into the structure, increasing the core temperature and increasing the diffusion rate of the bound water.

The DBK Drymatic Floor System, combined with the Boost, is the most effective target drying system on the market.



Features:

- Lightweight and portable
- Reduces waste to landfill
- Requires no fixing to structure
- Reduces volume of air being managed, maximising performance
- Washable and long-lasting
- Flame retardant material
- Saves energy, time and strip-out
- Roll out, connect and go!

TECHNICAL DATA

Available Sizes (W x L)	3' x 20"
	3' x 3'
	6.5' x 20"
	6.5' x 3'
	6.5' x 5'
	10' x 20"
	10' x 3'
	10' x 5'
	10' x 6.5'
Fastening Method	High Strength Velcro
Joinable	Yes
Maximum Operating Temp	176°F
Washable	Jet Wash, Steam Clean or Machine Wash



Custom sizes are available on request
Please contact for more information

Building Restoration

Concrete Slabs



Larger Losses...



Hardwood Floor Restoration





DRYMATIC 2 (FGPH064)

- Heat and Air Exchange Unit
- Programmable touch screen for optimum control of the drying chamber
- Rotomolded for toughness and durability
- Operates in freezing temperatures up to 122°F
- Comes with the required 4-Hose Kit

\$3,250.00



INJECTION KIT (FGB344)

- 2 Rotomolded 7-Port 1.5" diameter outlet/inlet that attach to Drymatic 2
- Comes with 2 x 7-port adaptors, 50' of 1.5" hose, 14 plastic cuffs, and a roller bag
- Creates a heated push/pull system within a cavity

\$620.78



Y-PIECE ATTACHMENT KIT (FGB343)

- Rotomolded Y-piece splitter attaches to Drymatic 2
- Comes with 3 x 20' hoses, a hose joiner, jubilee clips, and a roller bag
- Allows for taking air from two locations or putting heat into two rooms

\$297.13



REDUCER ATTACHMENT KIT (FGB345)

- Rotomolded reducer attaches to Drymatic 2
- Comes with 20' of hose and jubilee clip
- Ideal for venting wet air out through a dryer vent

\$83.67



DRYMATIC BOOST BAR (FGPH109)

- Adaptive Heat Drying System
- Touch screen provides feedback to the user and gives control over temperature and power levels
- Rotomolded for toughness and durability
- Operates in freezing temperatures up to 122°F

\$1397.68



90° ADAPTOR (FGB342)

- Diverts heated airflow down into a subfloor space or upwards into a wall cavity
- Rotomolded for toughness and durability
- Temperature resistant materials
- Removes the need for plastic ducting

\$129.27



4-PORT ADAPTOR KIT (FGB341)

- Splits heated airflow into 4 separate channels
- Enables connection of layflat ducting or 4" hoses
- Perfect for ducting into ceiling voids, subfloor spaces or cavities.
- Comes with 4-Port Adaptor, 4 x 20' hoses, jubilee clips, and a roller bag

\$379.53



INJECTION KIT (FGB340)

- Splits heated airflow into 12 separate channels
- Enables connection of 1.5" hose connections
- Perfect for ducting kitchen cabinet spaces, cavity walls and ceilings.
- Comes with 12-Port Adaptor, 50' of 1.5" pipe, 12 plastic cuffs, and a roller bag

\$678.38



DRYMATIC BOOST BOX (FGPH052)

- Adaptive Heat Drying System
- Introduces up to 1.4kW of additional heat energy into the drying environment
- Offers three pre-set temperature profiles
- Works with Drymatic Wall and Floor System.
- UL approved and designed to be left unattended

\$947.43

INDIVIDUAL WALL AND FLOOR MAT PRICING

Connectors/Misc

FGPH023	Fan to Mat Connector	\$41.23
FGPH033	Mat to Boost Box Velcro Strap	\$16.50
FGPH056	Mat to Mat Connector (12")	\$17.51
FGPH019	Mat to Mat Connector (24")	\$19.79
FGPH0	Mat to Mat Connector (36")	\$33.30
FGPH022	Parallel Connector (Connects two Mats off one Boost box)	\$74.20
FGPH123	Triangular Mat Connector	\$121.85
FGPH125	Fan to Boost Box Connector	\$38.50
FGPH132	1 Fan to Boost Bar Connector	\$38.50
FGB346	Boost Bar to Mat Velcro Strap	\$16.50
PA55144	Black Wheelie Bag (Pictured Right)	\$124.99
FGPH021	Pedestal May (Wraps Around Toilet)	\$195.12
FGPH123	Triangle Mat	\$121.85

Wall Mats

PART NO.	Size: Length x Height	PRICE
FGPH014	13' x 3'	\$651.30
FGPH051	6' x 3'	\$417.99
FGPH058	13' x 20'	\$436.96
FGPH085	6' x 20'	\$237.02

Floor Mats

PART NO.	Size: Length x Width	PRICE
FGPH015	10' x 6.5'	\$590.85
FGPH016	10' x 5'	\$500.16
FGPH017	10' x 3'	\$417.72
FGPH057	10' x 20"	\$215.72
FGPH041	6.5' x 5'	\$436.96
FGPH036	6.5' x 3'	\$346.27
FGPH053	3' x 3'	\$173.13
FGPH054	6.5' x 20"	\$161.58
FGPH055	3' x 20"	\$92.33

KITS AND PACKAGES

Drymatic II Full Attachment Kit (FGPH064FK)	<ul style="list-style-type: none"> • Drymatic II • Drymatic II Standard Hose Kit • Drymatic II Y piece Attachment Kit • Drymatic II Reducer Attachment Kit • Drymatic II Injection Attachment Kit 	\$4,021.90
Drymatic II Upgrade Attachment Kit (FGPH064UK)	<ul style="list-style-type: none"> • Drymatic II • Drymatic II Standard Hose Kit • Drymatic II Y piece Attachment Kit • Drymatic II Reducer Attachment Kit 	\$3,521.88
Boost Bar Full Attachment Kit (FGPH109FK)	<ul style="list-style-type: none"> • Boost Bar • Boost Bar Injection Kit • Boost Bar 4-Port Adaptor Kit • Boost Bar 90° Adaptor • Fan to Boost Bar connector 	\$2,494.12
Boost Bar Upgrade Attachment Kit (FGPH109UK)	<ul style="list-style-type: none"> • Boost Bar • Boost Bar Injection Kit • Boost Bar 4-Port Adaptor Kit • Fan to Boost Bar Connector 	\$2,357.37
Full Start-Up Package (FGPH150)	<ul style="list-style-type: none"> • Drymatic II (Includes Standard Hose Kit) • (2) Boost Bar • Boost Bar Injection Adaptor Kit • Boost Bar 4-Port Adaptor Kit • 10' x 6.5' Floor Mat • 10' x 5' Floor Mat • 10' x 3' Floor Mat • Pedestal Mat (for toilets) • (6) 24" Mat to Mat Connectors • (2) Fan to Boost Bar Connector • Roller Bag 	\$8,857.77
Boost Bar Kit (FGPH109K)	<ul style="list-style-type: none"> • Boost Bar and Fan to Boost Bar Connector 	\$1,436.18
Boost Bar Kit (FGPH109K2)	<ul style="list-style-type: none"> • (2) Boost Bar and Fan to Boost Bar Connectors 	\$2,786.19
Boost Bar Kit (FGPH109K4)	<ul style="list-style-type: none"> • (4) Boost Bar and Fan to Boost Bar Connectors 	\$5,399.36
Drymatic Kit (FGPH064K2)	<ul style="list-style-type: none"> • (2) Drymatic II with Standard Hose Kit 	\$6,240.00
Drymatic Kit (FGPH064K4)	<ul style="list-style-type: none"> • (4) Drymatic II With Standard Hose Kit 	\$12,220.00

KITS AND PACKAGES

Boost Bar Floor Drying Start Up Kit (FGPH151)	<ul style="list-style-type: none"> • Boost Bar • 10' x 6.5' Floor Mat • 10' x 5' Floor Mat • 10' x 3' Floor Mat • (6) 24" Mat to Mat Connectors • Fan to Boost Bar Connector • Roller Bag 	\$3,127.37
Boost Box Floor Drying Start Up Kit (FGPH152)	<ul style="list-style-type: none"> • Boost Box • 10' x 6.5' Floor Mat • 10' x 5' Floor Mat • 10' x 3' Floor Mat • (6) 24" Mat to Mat Connectors • Fan to Boost Box Connector • Roller Bag 	\$2686.12
Small Floor Mat Kit (FGPH153)	<ul style="list-style-type: none"> • 6.5' x 3' Floor Mat • 6.5' x 20" Floor Mat • 3' x 3' Floor Mat • 3' x 20" Floor Mat • Triangle Mat • Doorway Mat • (3) 12" Mat to Mat Connectors • (3) 24" Mat to Mat Connectors • Roller Bag 	\$1,126.08
Small Wall Mat Kit (FGPH154)	<ul style="list-style-type: none"> • 6.5' x 20" Wall Mat • 6.5' x 3' Wall Mat • 6.5' x 20" Floor Mat • Triangle Mat • Doorway Mat • (3) 12" Mat to Mat Connectors • (3) 24" Mat to Mat Connectors • Roller Bag 	\$1,178.73
Large Floor Mat Kit (FGPH155)	<ul style="list-style-type: none"> • (2) 10' x 6.5' Floor Mat • 10' x 5' Floor Mat • 10' x 3' Floor Mat • (3) 24" Mat to Mat Connectors • (3) 36" Mat to Mat Connectors • Roller Bag 	\$2,312.32
Large Wall Mat Kit (FGPH156)	<ul style="list-style-type: none"> • 13' x 3' Wall Mat • 13' x 20" Wall Mat • 10' x 20" Floor Mat • Triangle Mat • (3) 12" Mat to Mat Connectors • 24" Mat to Mat Connector • Roller Bag 	\$1,582.84

We show you how to get the most out of your investment...

DBK have a purpose built Flood House that enables full product training for all customers who invest, or are looking to invest, in DBK Drymatic equipment.

Our Flood House is built using a variety of materials that are commonly used in the US construction industry; ranging from wood frame to more challenging materials such as concrete



Learn what to measure and how to measure it...



IICRC

Institute of Inspection Cleaning
and Restoration Certification



2019 Course Schedule

WRT Classes

- February 18-20
- May 27-29
- September 29 - October 1

AMRT Classes

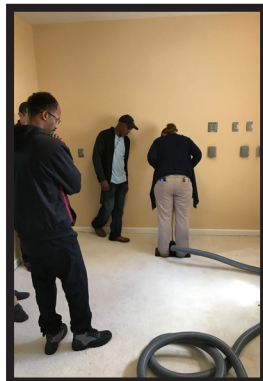
- June 23-26

FSRT/OCT

- July 21-23

Location:
DBK USA
212 Northeast Dr
Spartanburg, SC 29303

Register Online @ www.trainemta.com



Building Restoration

TOOLBOX TALKS... WE BRING THE TRAINING TO YOU

If you can't free up the time to come to us, we come to you! DBK offer a cut-down version of our product training that focuses on the key features of each of the Drymatic products.

- How to use
- When to use
- Why you should use

The Toolbox Talk is a great refresher for all stakeholders within your business!

XACTIMATE[®]

US Listings

DBK Product	Item Code	Description	Price (USD)
Boost Box/Bar	WTRHTAM	Thermal Air Mover (Boost Box/Bar and Airmover Combination)	\$200/day
Mats (Each)	WTRHTBL	Drying blanket/mat (per 24 hr period) - No monitoring	\$45/day
Drymatic System	WTRHTX	Heat Drying - thermal air exchanger	\$325/day

Canada Listings

DBK Product	Item Code	Description	Price (CAD)
Boost Box	WTRHTAM	Thermal Air Mover (Boost Box/Bar and Airmover Combination)	~\$205.50/day
Mats (Each)	WTRHTBL	Drying blanket/mat (per 24 hr period) - No monitoring	\$51.75/day
Drymatic System	WTRHTX	Heat Drying - thermal air exchanger	\$373.75/day



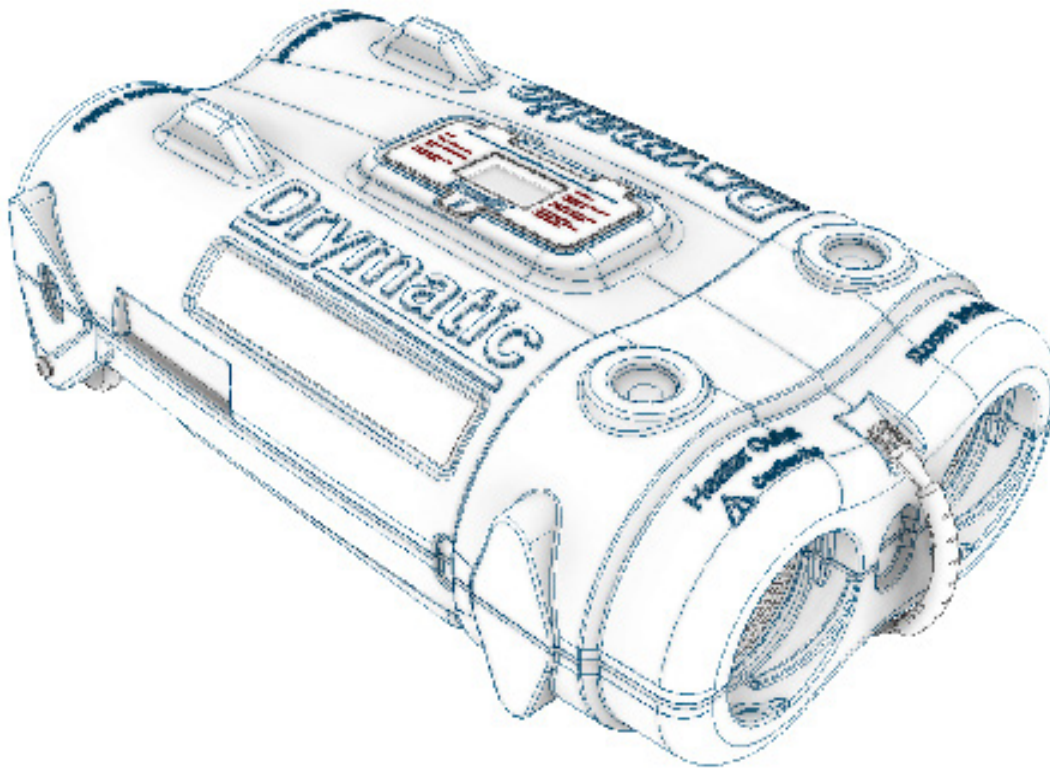
US Listings

DBK Product	Description	Price (USD)
Boost Box	Heat Drying, Per Day, Booster Unit	\$69.31/day
Mats (Each)	Heat Drying, Per Day, Drying Blanket or Mat	\$44.56/day
Drymatic System	Heat Drying, Per Day, Self-regulating Thermal Exchanger	\$321.82/day

Building Restoration

DBK Drymatic is an innovative and intelligent electric heat drying system designed to dry water damaged properties faster, saving costs and materials.

Whether it is a small house; a school or industrial facility; the DBK Drymatic System can be utilized to efficiently extract moisture from the property using controlled heat and air exchange.



For more information or to arrange a demonstration please contact:

DBK USA Inc
212 Northeast Drive
Spartanburg
SC 29303, USA

Email: jakob.hibbard@dbk-group.com
Telephone: +1 864-599-1600

www.drymatic.com
Find us on Facebook!