



# ChatGPT For Principals

I've got to think  
about that



## Get started

Log in

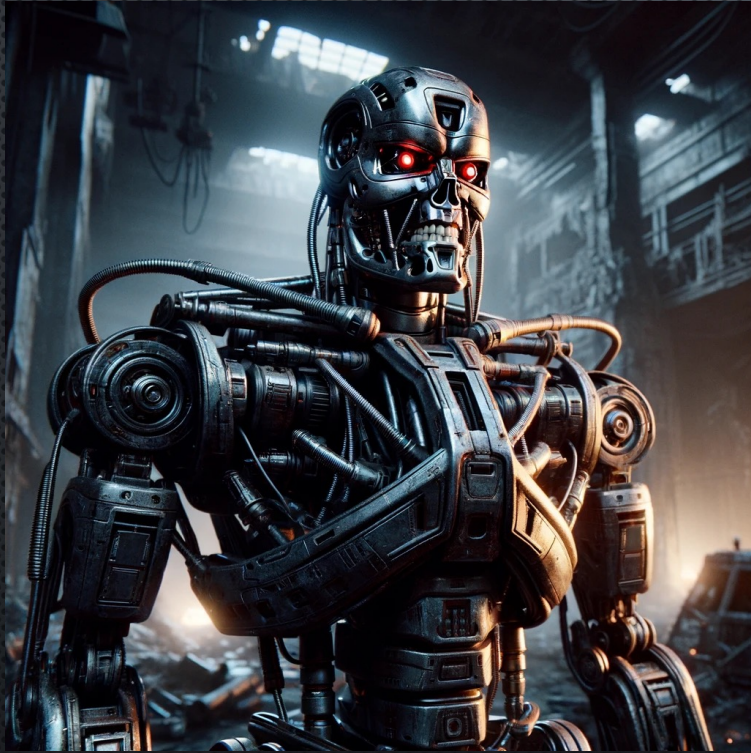
Sign up



[HTTP://CHAT.OPENAI.COM](http://chat.openai.com)

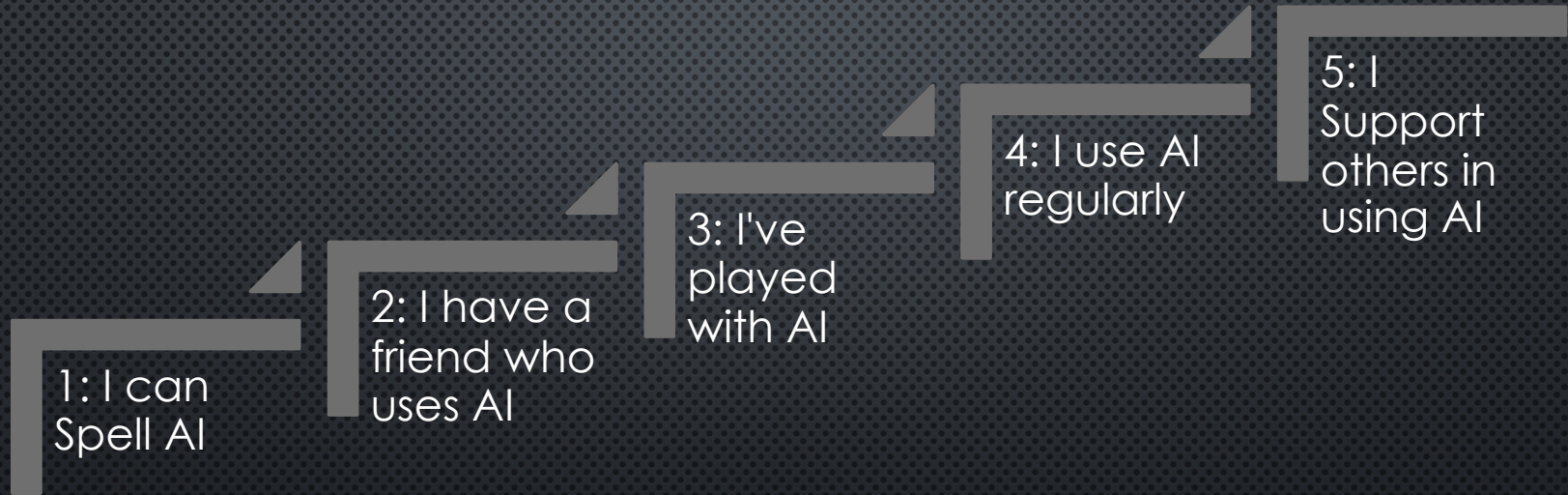


# HOW DO YOU FEEL ABOUT THIS AI STUFF?





# WHERE ARE YOU IN THE AI JOURNEY?





**ENTER...**  
**ChatGPT**

---

G: Generative

---

P: Pre-Trained

---

T: Transformer



# HOW DOES IT WORK?

FILL IN THE BLANK...

ROSES ARE RED,  
VIOLETS ARE \_\_\_\_\_

BLUE

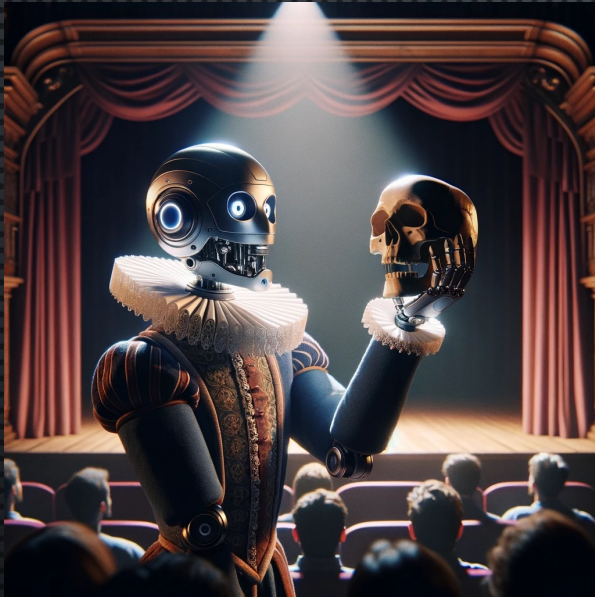
PRETTY SPENDY

NOT BLUE, AND YOU ARE  
NOT NICE.



# ONE MORE TIME...

TO BE OR



NOT TO BE, THAT IS THE QUESTION. WHETHER 'TIS NOBLER IN THE MIND TO SUFFER THE SLINGS AND ARROWS OF OUTRAGEOUS FORTUNE, OR TO TAKE ARMS AGAINST A SEA OF TROUBLES, AND BY OPPOSING END THEM?



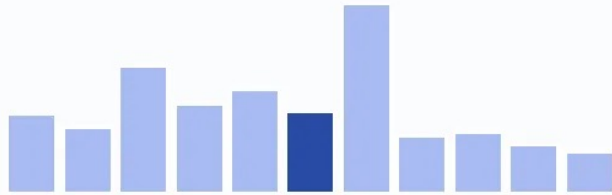
# CHATGPT3 VS CHATGPT4

- 175 BILLION VS 100 TRILLION
- TEXT VS MULTI-MODAL
- 2021 VS 2023
- FREE VS \$20/MONTH





# Prompt Engineering Salary in the United States

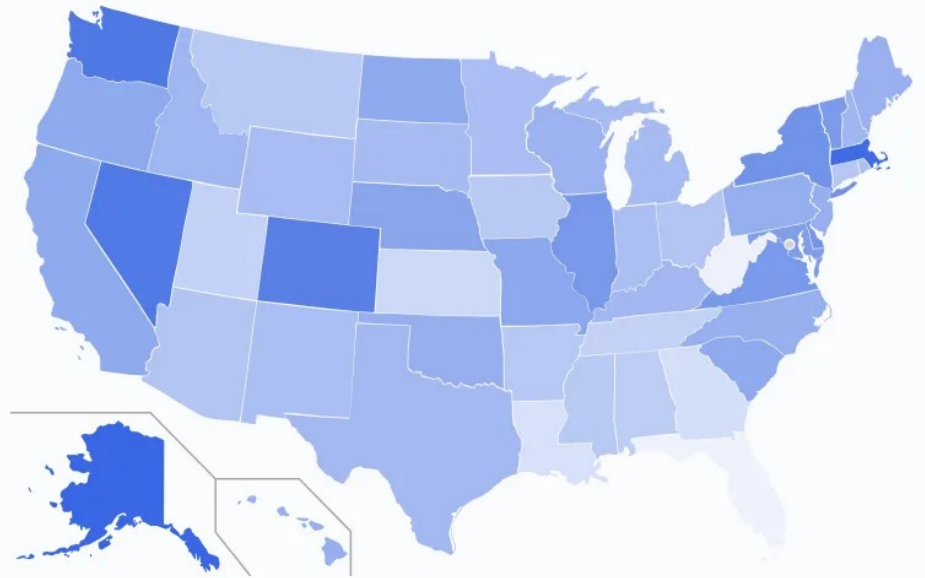


National Average

**\$62,977** /year

\$30 /hour

	Annual Salary	Monthly Pay	Weekly Pay	Hourly Wage
Top Earners	\$88,000	\$7,333	\$1,692	\$42
75th Percentile	\$72,000	\$6,000	\$1,384	\$35
Average	\$62,977	\$5,248	\$1,211	\$30
25th Percentile	\$47,000	\$3,916	\$903	\$23



\$32,500 Lowest Highest \$95,500



LEARN  
THROUGH  
PLAY

WRITE A SHORT POEM ABOUT  
HOW SPECIAL THE  
ASSOCIATION OF  
WASHINGTON SCHOOL  
PRINCIPALS IS.



LEARN  
THROUGH  
PLAY

COULD YOU SUGGEST A MEAL  
PLAN FOR “STAR WARS DAY?”

LEARN  
THROUGH  
PLAY

I NEED TO SEND AN EMAIL TO \_\_\_\_ABOUT  
\_\_\_\_. COULD YOU HELP ME DRAFT A  
MESSAGE THAT \_\_\_\_?



LEARN  
THROUGH  
PLAY

HOW COULD YOU ASSIST  
US IN OUR STRATEGIC  
PLANNING PROCESS?

# Google

🔍 strategic planning



Google Search

I'm Feeling Lucky



🔗 GPT-4



DA

What are the major components of a strategic plan?



DA

Thank you, I appreciate the outline of a strategic plan you shared. I am working with a team of leaders across my cooperative on the creation of a strategic plan. The team includes board members, WSIPC leadership, regional leaders and district staff. We want to build a strong foundation for re-imagining our cooperative. What are some protocols you would recommend for engaging this group in the development of our strategic plan?



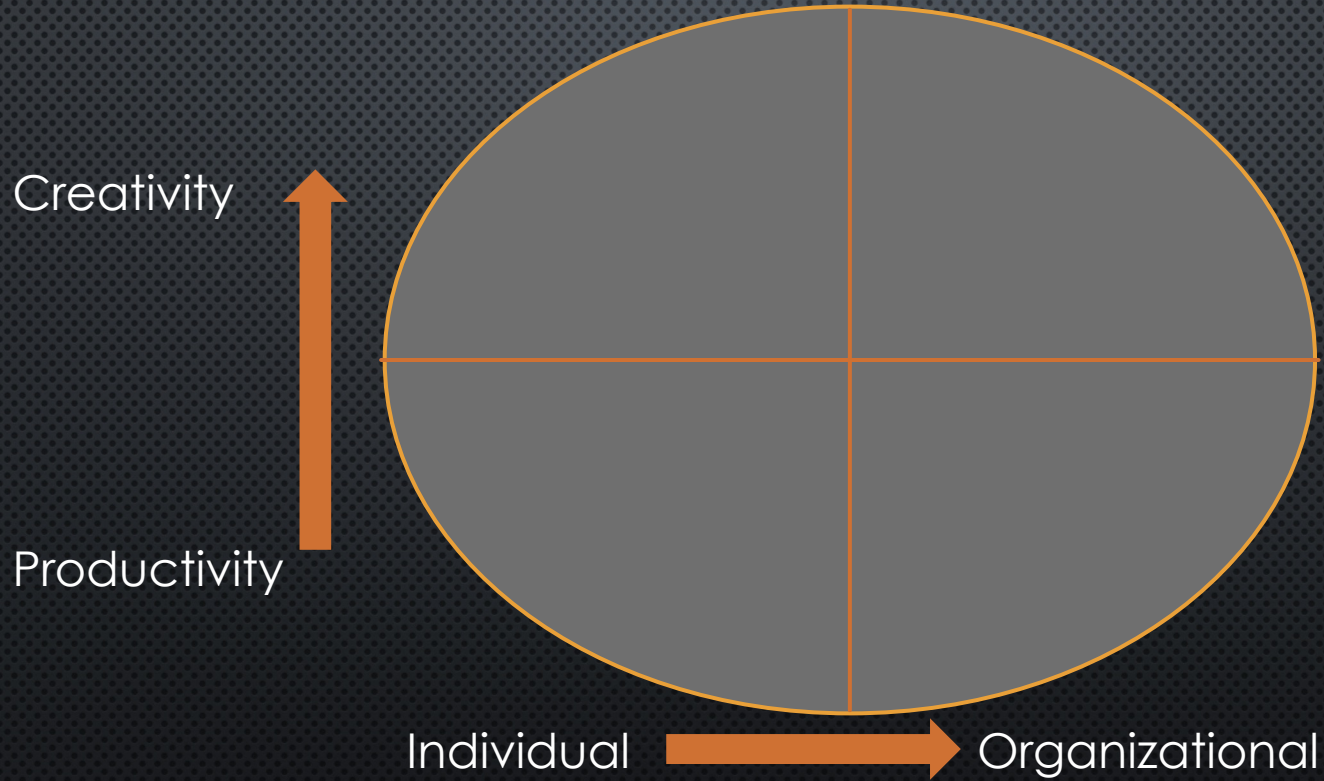




THINK OF AI  
AS...



# AI OPPORTUNITIES





**Do for us**

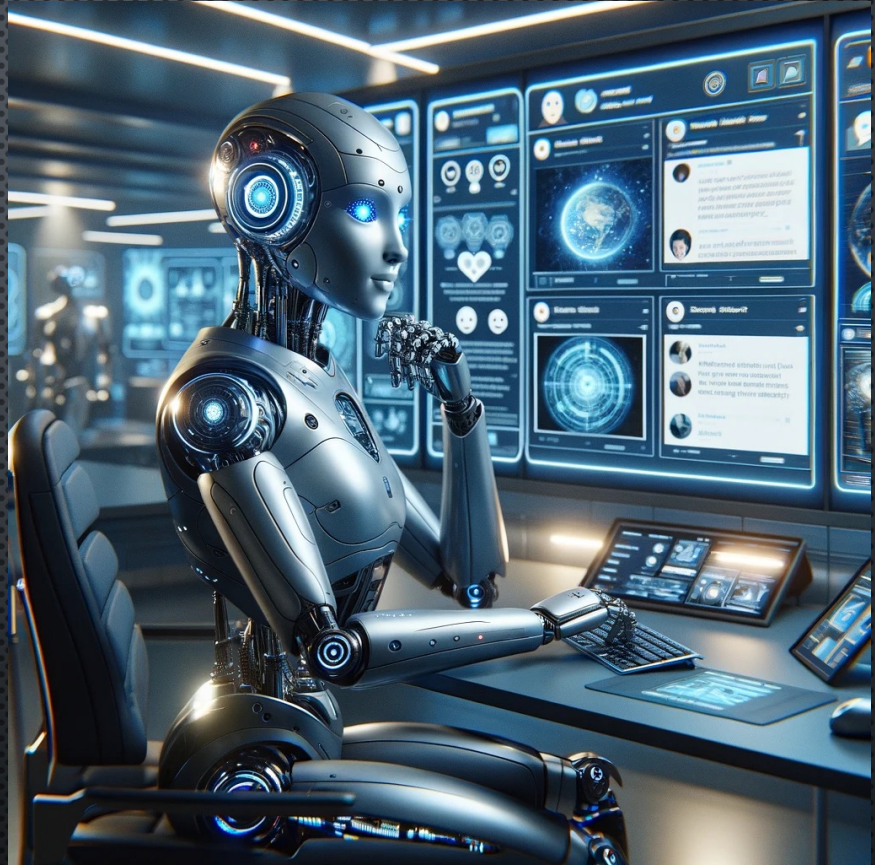


**Be for us**



# AI AS...

Productivity Assistant





# AI AS...

Data Analyst





# AI AS...

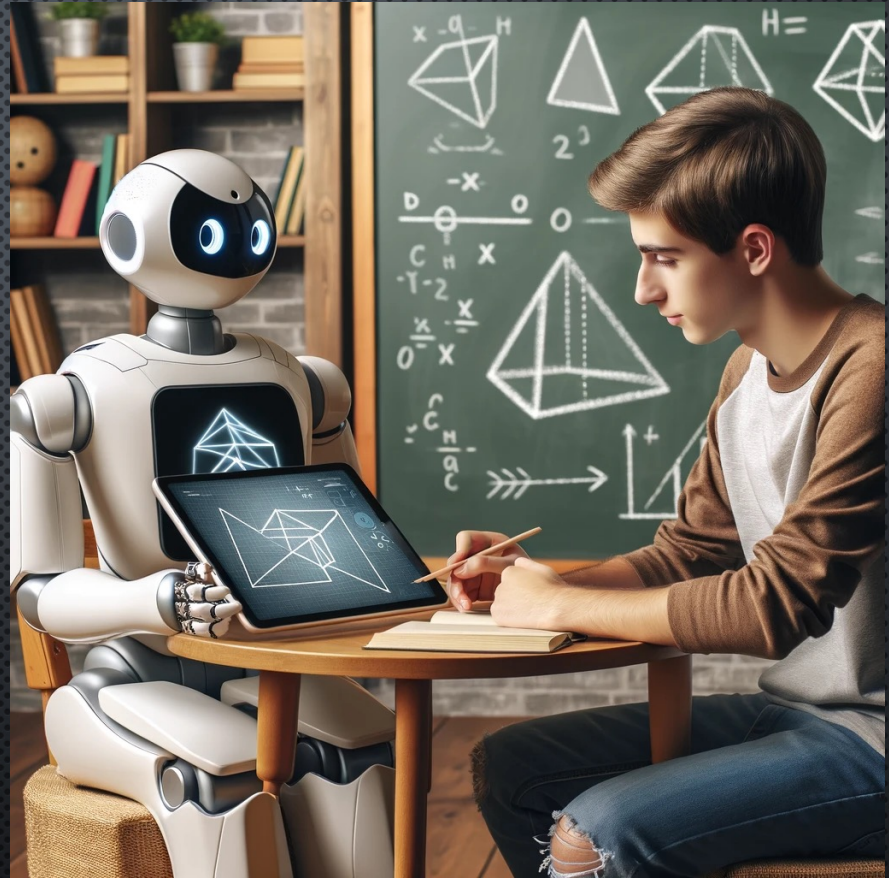
Thought Partner





# AI AS...

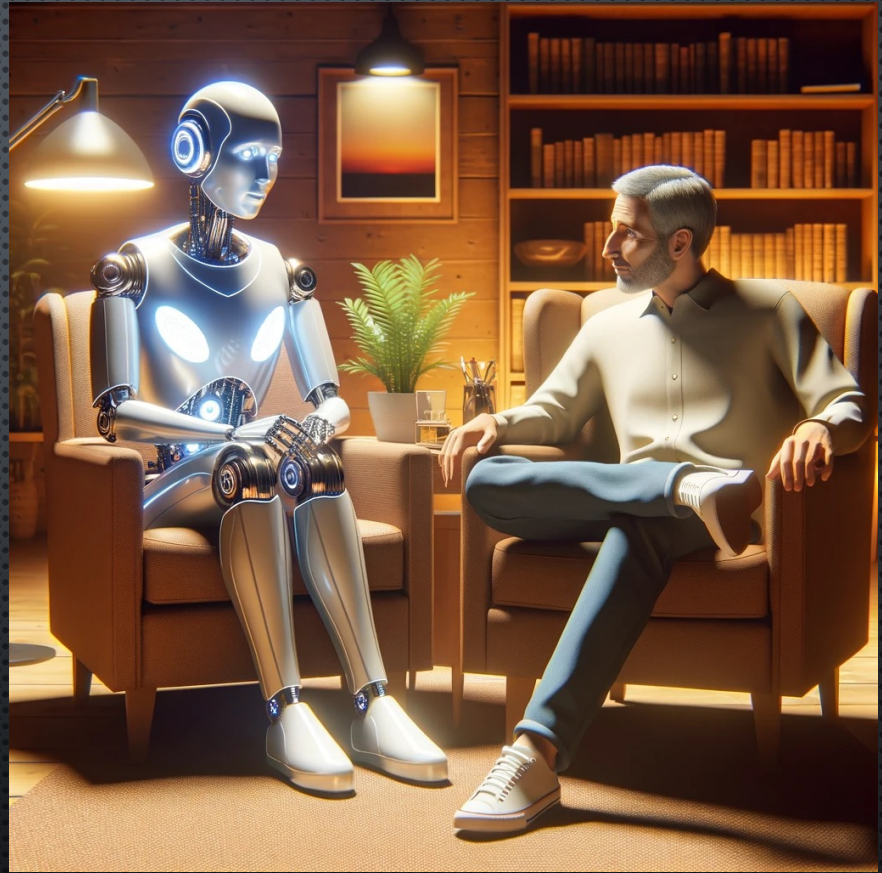
Mentor





# AI AS...

Counselor





# AI AS...

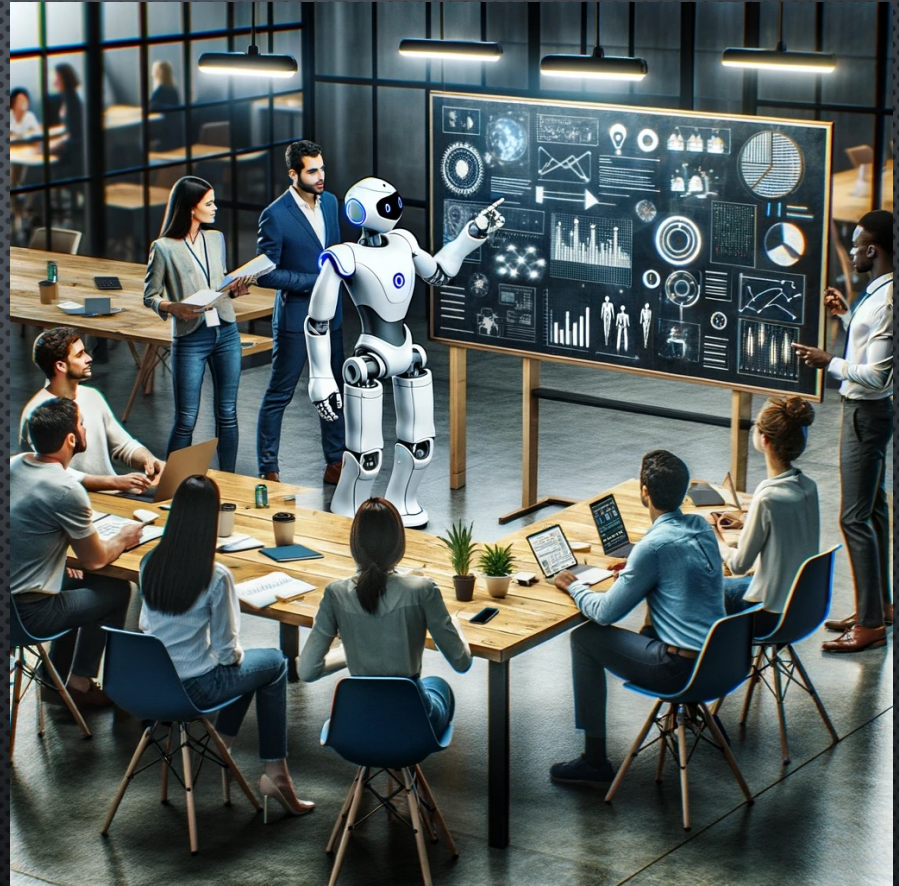
Creative Assistant



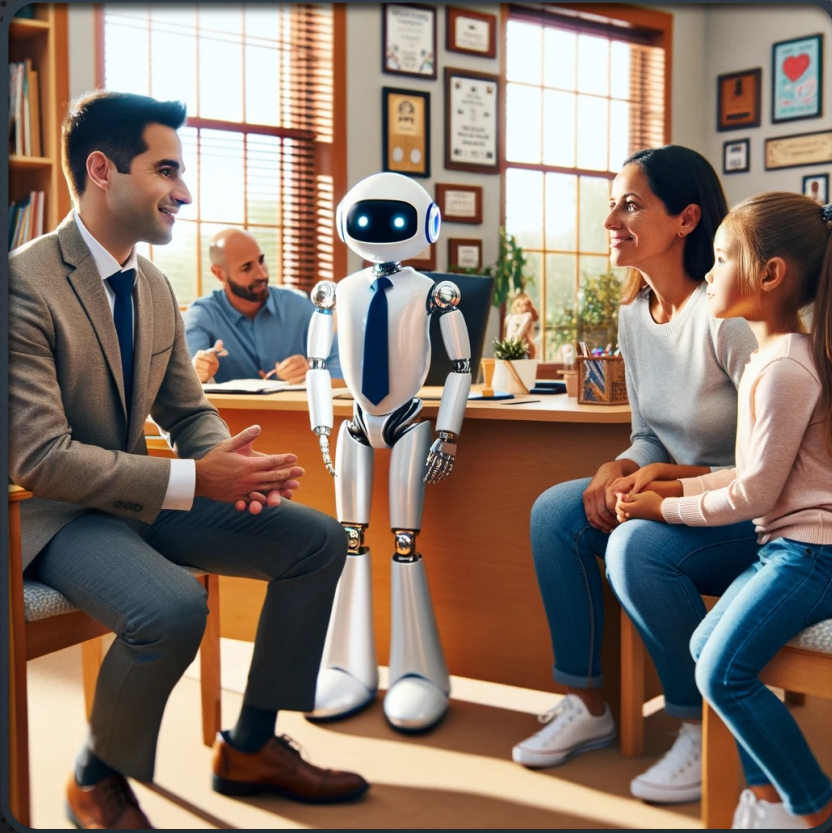


# AI AS...

Group Process  
Consultant







# PRINCIPALS

- INCLUSIVE EDUCATION
- STUDENT WELL-BEING
- PARENT AND COMMUNITY ENGAGEMENT
- LEADERSHIP COACHING
- CONFLICT RESOLUTION





**HAVE A  
VISION**



**IF YOU WANT TO GO FAST**  
**GO ALONE**



**IF YOU WANT GO GO FAR.**  
**GO TOGETHER**

**BUILD  
CAPACITY**





AND OFF  
WE GO...



