



TCEQ TRAINING PROVIDER UPDATES 2024

Paul Munguía
Senior Project Manager/Technical Specialist
Texas Commission on Environmental Quality
Occupational Licensing and Registration Division

Training Provider Topics

- Rule (30 TAC Chapter 30) and Regulatory Guidance Updates (RG-373)
- Exam Analysis
- BPAT Proctor Assessment Development
- Curriculum Development Reminders
- Job Task Analysis
- CBT Exams / Spanish Exams
- WUOLAC (how to participate)



Regulatory Guidance Updates (RG-373)

Rulemaking

- Revisions to definitions
- Training events and delivery methods
- Live-online credit
- Resiliency requirements

Instructor qualification review fee



RG-373 UPDATES - REVISIONS TO DEFINITIONS -1

Delivery methods:

- **In-person-** training that is interactive instructor-led training delivered in real time at the same physical location
- **Live-online-** training that is delivered virtually in real time as either instructor-led classroom, conference, or association meeting
- **Self-paced Training-** training that is delivered using various technologies with a separation of place and time between the instructor(s) or learning resources and the learner. Self-Paced training may include correspondence training, prerecorded training, and other technologies approved by the Executive Director

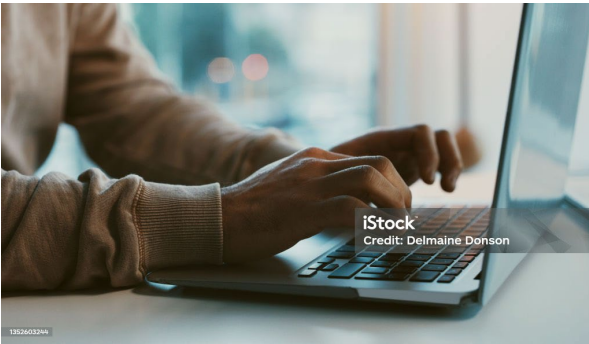


RG-373 UPDATES - REVISIONS TO DEFINITIONS -1



Training Types:

- classroom training
- conferences
- **prerecorded training**- training that has previously been recorded or developed through an online platform and is not delivered in person or in real time.
- **correspondence training**- self-paced training that can either be paper-based and conducted through a postal system, electronic-based static delivery, or a blend of these delivery systems.
- association meetings that include training sessions containing subject matter related to the particular license
- other professional activities, such as the publication of articles



RG-373 UPDATES - REVISIONS TO DEFINITIONS

Outdated Terminology:

- Webinar
- Tech-based



RG-373 UPDATES - REVISIONS TO DEFINITIONS - 2

Core vs. Continuing Education Training

Qualified Instructor vs. Qualified Presenter



TRAINING EVENTS AND DELIVERY METHODS

TYPES OF TRAINING EVENTS

- Classroom
- Conference
 - Seminar
 - Workshops
- Association Meeting
- Prerecorded Training
- Correspondence

DELIVERY METHODS

- In-person
- Live-online
- Self-Paced

- Other professional activates, such as the publication of articles



LIVE-ONLINE REPEATABLE FOR CE CREDITS

Current Rule:

The following types of training will not be approved or awarded training credit:

- (1) distance training or webinars that are repeated during the renewal period;
- (2) distance training that is intended to teach required manual skills; or
- (3) webinar training that is submitted to qualify an applicant for an initial license.

Revised Language:

The following types of training will not be approved or awarded training credit:

- (1) ~~distance training or webinars~~ self-paced training that are is repeated during the renewal period; or
- (2) ~~distance training~~ self-paced and live-online training that is intended to teach required manual skills.; or
- ~~(3) webinar training that is submitted to qualify an applicant for an initial license.~~



RESILIENCY REQUIREMENTS -1

While encouraged, training providers are not required to develop resiliency training. Those who wish to participate in providing resiliency training opportunities may do any, or all, of the following three options.

Option One: Revise the Basic Waterworks Operation Core Course

Option Two: Develop the Resiliency Overview Standalone Core Course

Option Three: Develop Resiliency Continuing Education Courses

The Resiliency Overview core course must be a minimum of two hours and include all topics listed in Resiliency Training Curriculum Guidance.



Effective April 1, 2024

RESILIENCY REQUIREMENTS -2

Water Operator Resiliency Training Providers

TCEQ approved resiliency courses listed in this section are also listed under the Water and Wastewater training dropdowns and begin with "(RESIL)". Resiliency training is only required for water operators, but the courses will also receive wastewater credits. For complete details, view the [Resiliency Training Guidance for Water Licenses](#).

TCEQ Approved Resiliency Overview Core Courses

The Resiliency Overview core course must be taken **once** by all water operators. After the Overview course has been taken, licensees must then obtain two hours of resiliency training in each renewal cycle.

Provider	Contact Information	Courses	Training/CE Credit Hours	Course Code	Mode
City of Longview (9255)	903-237-2783	(Resil) Resiliency	2	1664	Classroom

Core Resiliency Overview and CE courses listed on the TCEQ training website.

More resiliency CE courses needed.



TCEQ Approved Resiliency Continuing Education Courses

Two hours of resiliency CE training must be obtained in each renewal cycle.

Provider	Contact Information	Courses	Training/CE Credit Hours	Course Code	Mode
B & B Technical	713-412-2599 or bbreeding246@yahoo.com	(Resil) Identifying	2	1622	Classroom

INSTRUCTOR QUALIFICATION REVIEW FEE

- Clarify that there is a fee for stand-alone instructor qualification review requests.
- The fee will be per course review and per training provider.
- Courses approved for an instructor are not transferable to other training providers.

Courses

List the courses for which you are seeking qualification. ***The provider must be approved for courses in this list.***

Course Name
Basic Water Works Operations (0092)
Groundwater Production (0223)
Surface Water Production I (0942)
Surface Water Production II (0954)
Water Distribution (0605)
Water Laboratory (0285)
Water Sampling & Field Analysis (0612)
Water Technology (0613)
Basic Wastewater Operations (0059)
Advanced Math (0851)

Course Name
Applied Confined Space Safety (0042)
Basic Math (0067)
Chlorinator Systems & Chemical Handling (0972)
Chlorine Use, Handling & SCBA (0666)
Customer Service Inspections (0606)
Pump & Motor Maintenance (0396)
Valve & Hydrant Maintenance (0961)
Water Utility Calculations (0108)
Water Utility Management (0550)
Water Utility Safety (0426)



Exam Analysis

- Pass rates for the exams.
 - We monitor pass rates for the exams.
- Wording of exam questions.



EXAM ANALYSIS – PASS RATES -1

Water Occupational Licenses

Date Range 1/1/20 – 2/20/24

License	Test Administered	Tests Passed	Percent Passed
Water Operator A	1,877	323	17.2%
Groundwater B	673	242	36.0%
Surface Water B	1,309	341	26.1%
Distribution B	1,266	281	22.2%
Groundwater C	3,070	1,215	39.6%
Surface Water C	1,545	829	53.7%
Distribution C	3,498	1,526	43.6%
Waster Operator D	12,643	4,940	39.1%
	25,881	9,697	34.7%



EXAM ANALYSIS – PASS RATES -2

We have the ability to analyze not only the pass rate for each exam, but also the individual exam questions. If an exam question has a very low pass rate, we evaluate the question for accuracy or determine if the question could be worded clearer.

The term "[REDACTED]" is defined as the:

13.91%

A.

7.89%

B.

71.05%

2 C.

7.14%

D.



EXAM ANALYSIS – WORDING OF QUESTIONS

If a transporter is transporting waste to a MSW Type IAE landfill and does not discover stand-alone putrescible waste or household wastes, but does discover such waste within Class 3 nonhazardous industrial solid waste, along with brush and demolition waste being discharged, what is the responsibility of the transporter?

Verses

If non-allowable wastes are discovered in a load of waste being discharged at an MSW facility, what is the responsibility of the transporter?



BPAT Proctor Assessment Development Overview

- To obtain a Backflow Preventer Assembly Tester (BPAT) license, a person must pass a practical skills exam.
- This exam is conducted at the end of the core course training.
- The practical skills exam requires a TCEQ approved proctor the exam to assess the student's performance.



BPAT PROCTOR ASSESSMENT DEVELOPMENT

To become a proctor, a person would need to complete a “How to Become a Proctor” course given by the American Backflow Prevention Association (ABPA).

TCEQ is working with BPAT/CSI subject matter experts to develop an assessment for proctors.



Curriculum Development Reminders

- Qualified Instructors/Presenters
- Copyright compliance
- NO Social Security Numbers



Job Task Analysis Overview

- We conduct a job task analysis for our exams.
- This consists of developing a survey of job tasks, which is done with the assistance of subject matter experts.
- The survey is then distributed to all applicable license holders that have held the license for at least three years.



JOB TASK ANALYSIS - 1

Survey example, asking how often each task is performed and how important is the task to public health and the environment.

Irrigator Job Task List	How often do you perform this task?								How important is this task to public health and the environment?								Composite Score
	Never	Daily	Weekly	Monthly	Annually	Frequency Value	Mean	Total	Not Important	Minimally Important	Fairly Important	Very Important	Critical	Criticality Value	Mean	Total	
Hydraulic Tasks																	
Calculate GPM for station calculation	4%	16%	31%	23%	26%	250%	3.5	792	1%	2%	10%	25%	63%	345%	4.45	763	8.63
Hand draw a new or correct a as-built plan	16%	27%	29%	16%	12%	179%	2.79	734	6%	6%	18%	25%	44%	295%	3.95	687	5.29
Use a engineers scale to verify a plan	14%	22%	28%	17%	19%	207%	3.07	755	6%	5%	18%	24%	47%	303%	4.03	709	6.26
Use charts to calculate hydraulics	13%	24%	30%	16%	17%	201%	3.01	756	4%	5%	19%	24%	48%	305%	4.05	713	6.15



JOB TASK -2



We use the results of the job task analysis to review our exams to ensure accuracy and applicability. We also use these results to develop new exam questions for current and future use.



CBT Exams / Spanish Exams

- All exams are offered at TCEQ approved Computer-Based Testing locations.
- There are no paper exams, except for ADA accommodations.
- Currently we have all entry
- level exams offered in Spanish
- and working on more.



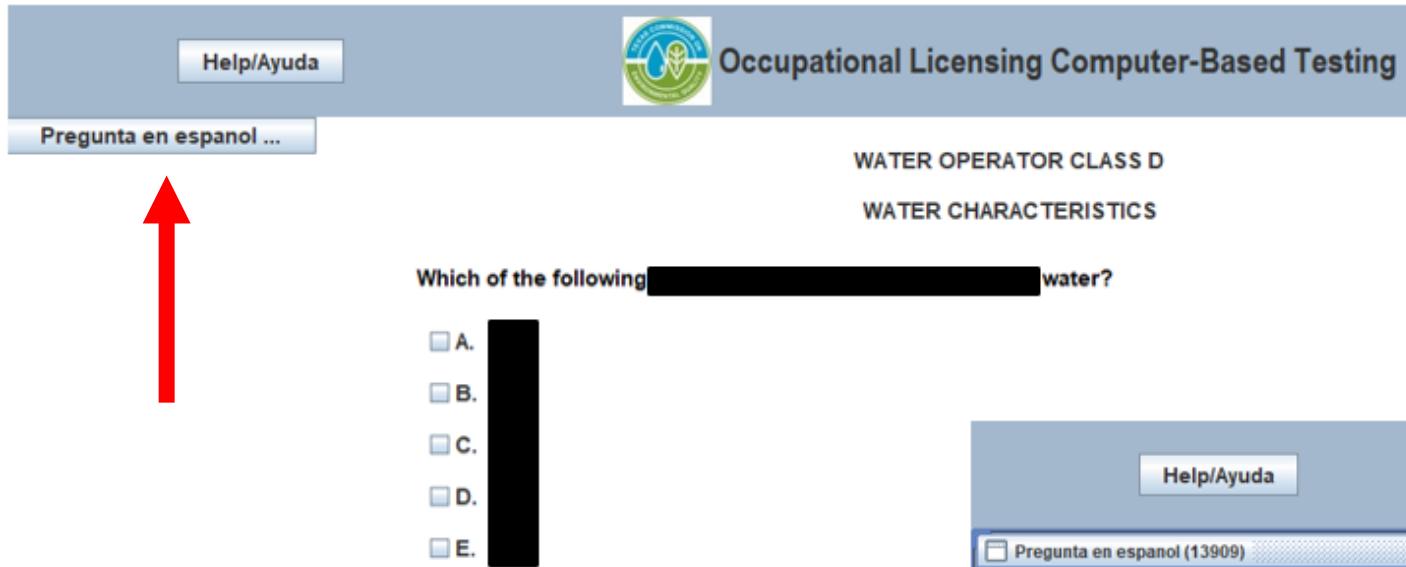
Computer-Based Testing

TCEQ ofrece exámenes por computadora para licencias ocupacionales, incluyendo algunos exámenes en español.

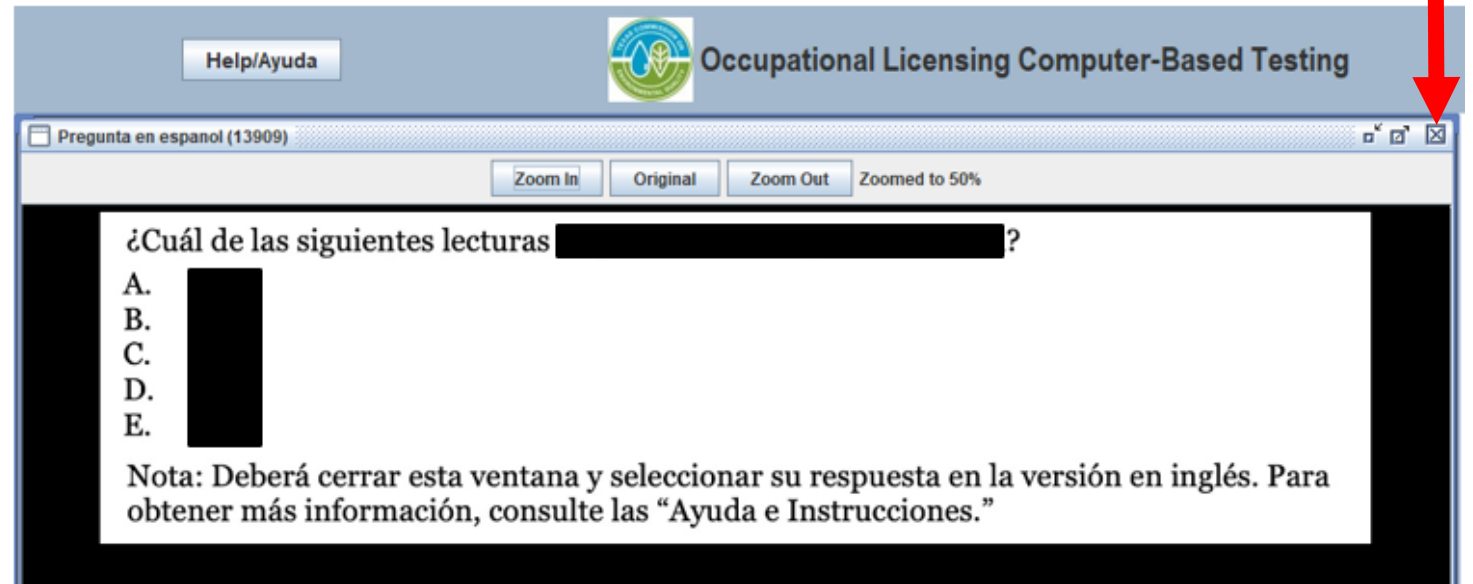
TCEQ offers computer-based testing for occupational licensing, including some exams in Spanish.



EXAM OFFERED IN SPANISH - CBT



View the question, along with any applicable attachments or formulas in Spanish.



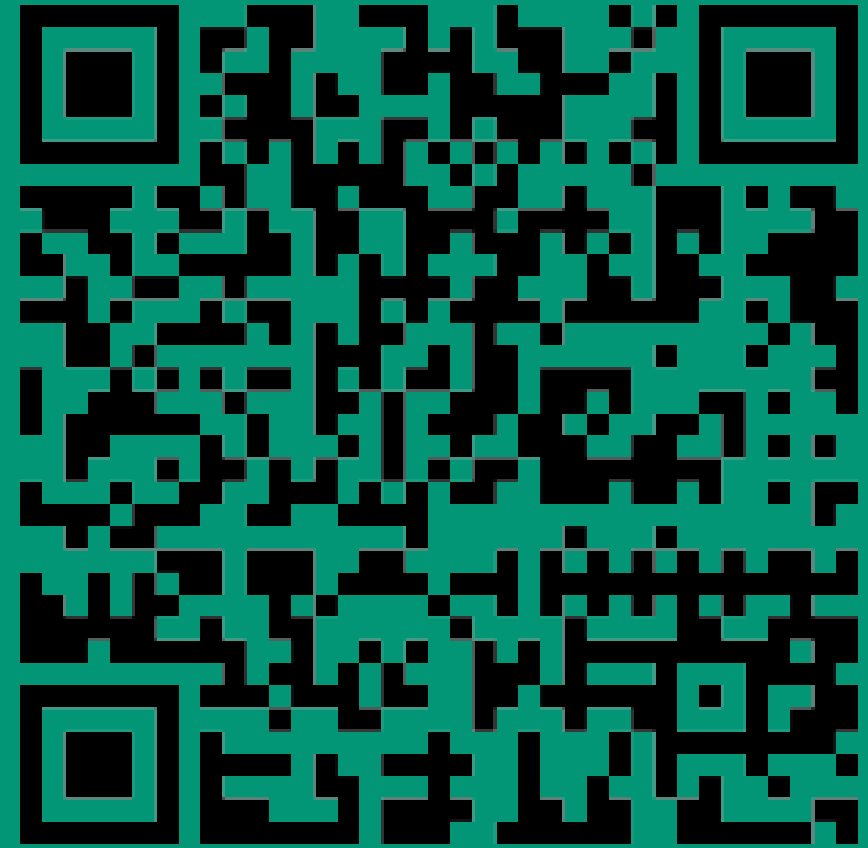
WUOLAC

Water Utility Operator Advisory Committee

- Represents various geographic areas of the state, businesses, governments, associations, and industries.
- Reviews training and educational materials.
- Reviews Job Task Analysis and exam validations.
- Advises TCEQ regarding questions regarding licensing requirements, rules, requirements and policies.
- Advises TCEQ on issues that need to be addressed in the industry.

Want to attend these meetings?
Email: oltraining@tceq.texas.gov





Thank you !

✉ oltraining@tceq.texas.gov