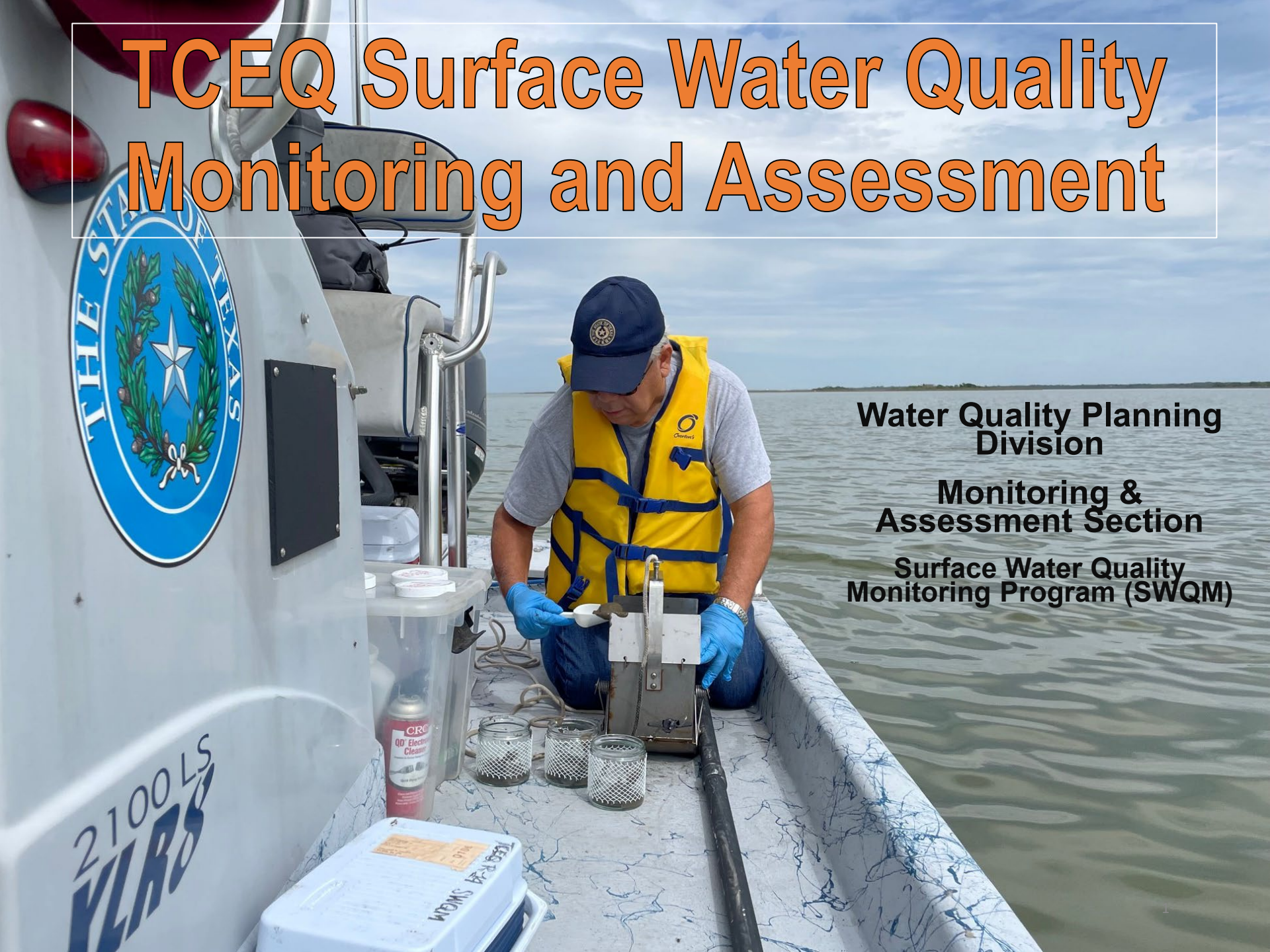


TCEQ Surface Water Quality Monitoring and Assessment



**Water Quality Planning
Division**

**Monitoring &
Assessment Section**

**Surface Water Quality
Monitoring Program (SWQM)**

SWQM Responsibilities



Routine monitoring

Special projects

Continuous Water Quality
Monitoring Network
(CWQMN)

Program Oversight

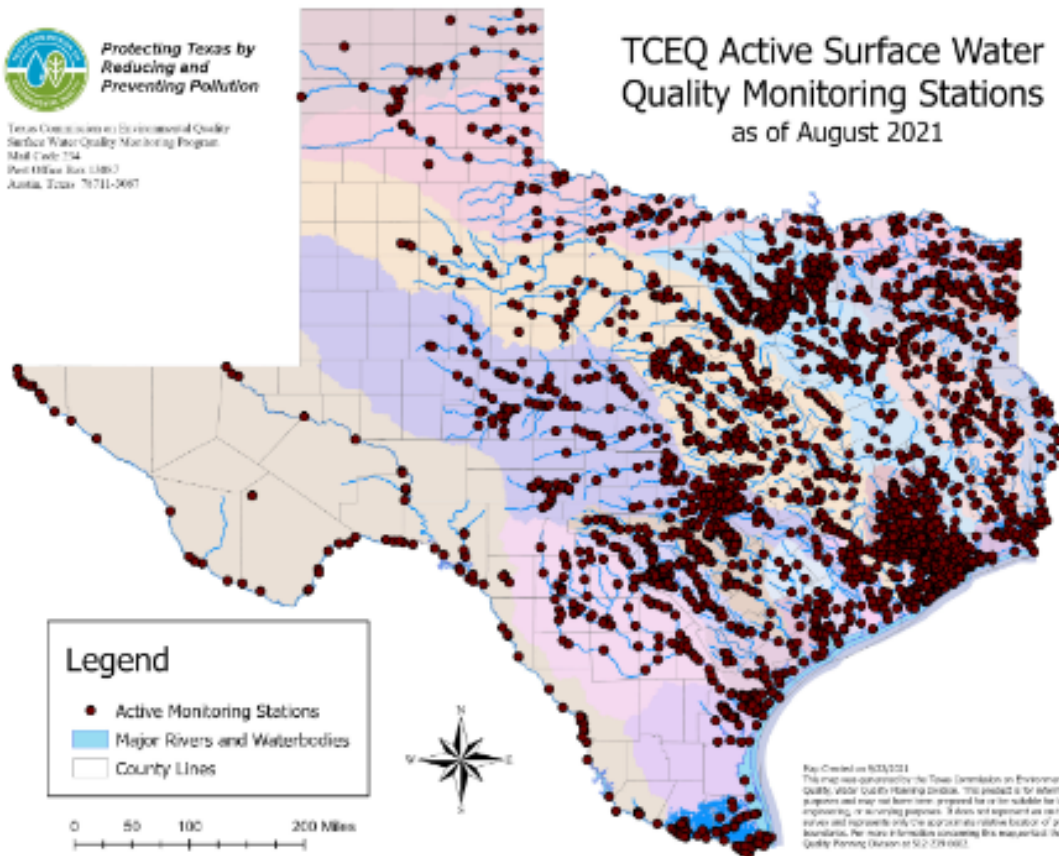
Assessment



Protecting Texas by
Reducing and
Preventing Pollution

Texas Commission on Environmental Quality
Surface Water Quality Monitoring Program
Mail Code 514
Post Office Box 13893
Austin, Texas 78711-0893

TCEQ Active Surface Water Quality Monitoring Stations as of August 2021



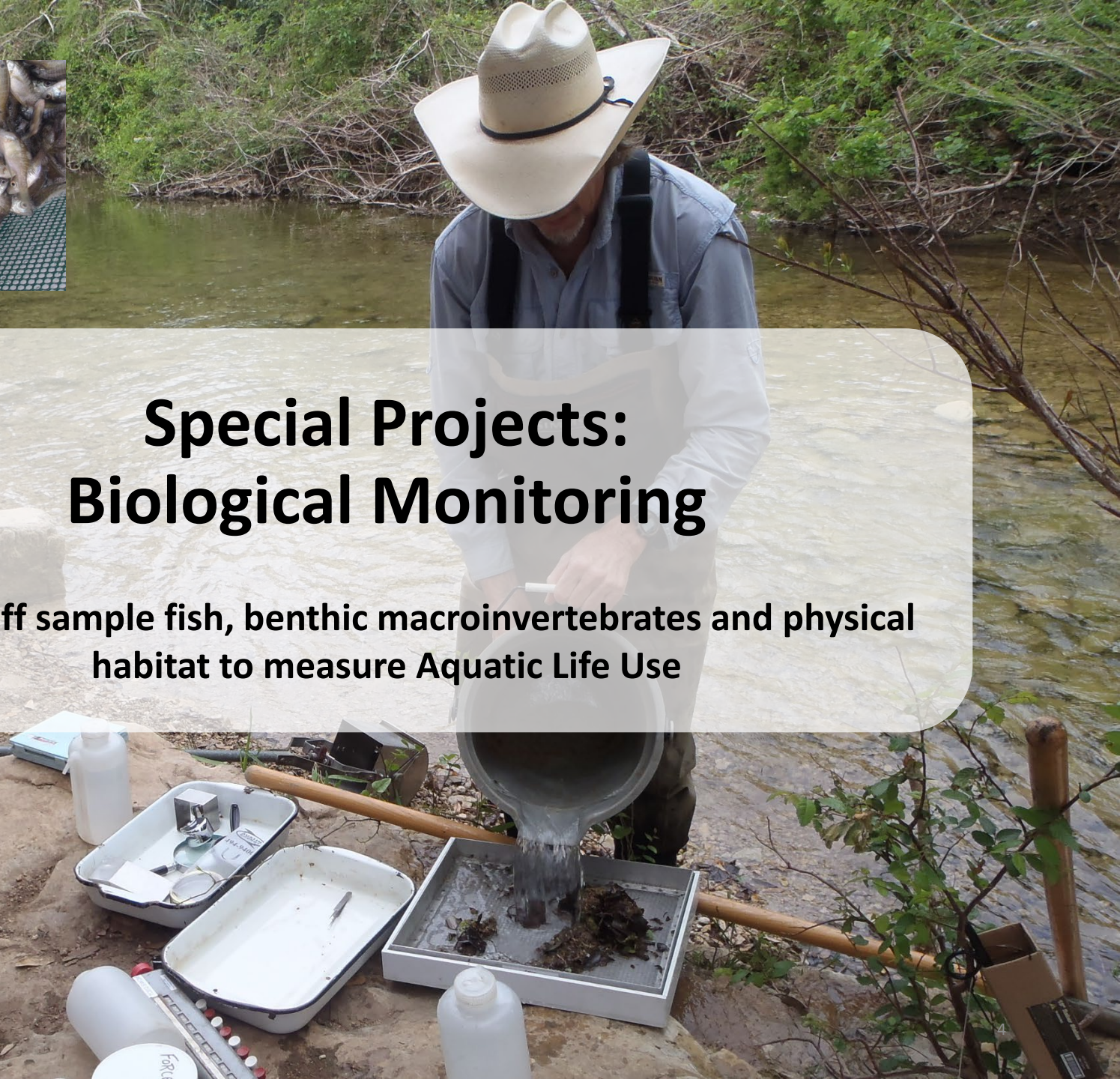
Routine Monitoring

TCEQ staff collect
water samples and
make
measurements as
part of surface
water quality
monitoring at
waterbodies across
Texas.



Special Projects: Biological Monitoring


TCEQ staff sample fish, benthic macroinvertebrates and physical habitat to measure Aquatic Life Use



A person wearing a red jacket, blue gloves, and a tan cap is working on a fish on a boat. The person is using a pipette to transfer liquid from a small vial into a clear plastic bag. A semi-transparent white text box is overlaid on the image, containing the title and a paragraph of text.

Special Projects: Contracts

TCEQ staff manage contracts for projects that collect samples as part of national surveys, projects to develop methods, and many more.



Continuous Water Quality Monitoring Network (CWQMN)

SWQM staff coordinate the data collection of a network of continuous water quality monitoring at 32 sites in Texas.

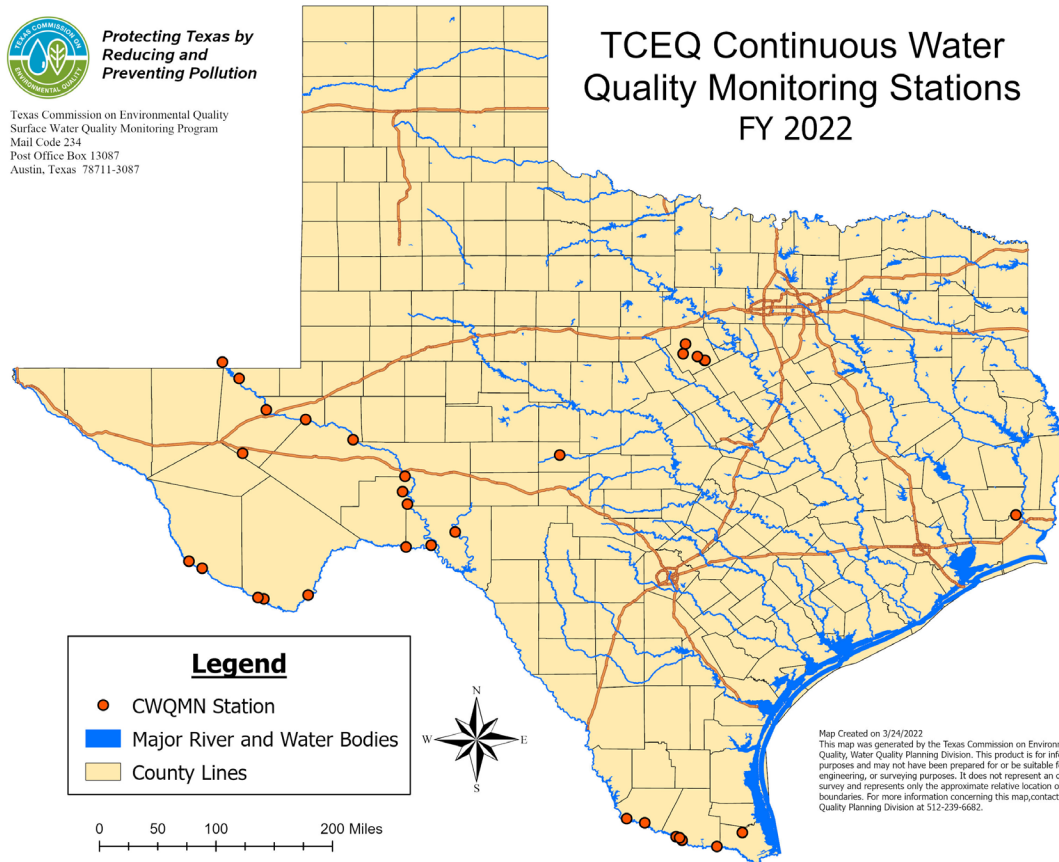
CWQMN Stations



**Protecting Texas by
Reducing and
Preventing Pollution**

Texas Commission on Environmental Quality
Surface Water Quality Monitoring Program
Mail Code 234
Post Office Box 13087
Austin, Texas 78711-3087

TCEQ Continuous Water Quality Monitoring Stations FY 2022



A group of people, mostly men, are wearing waders and hats, working in a stream. They are holding long poles or nets. The background is a dense forest with green trees. A semi-transparent white box with rounded corners is overlaid on the center of the image, containing text.

Program Oversight: Training

SWQM staff host the annual SWQM workshop for TCEQ regional staff and river authority partners.

SWQM staff conduct audits of regional collectors

Program Oversight: Coordination

Together with the Clean Rivers Program, SWQM staff coordinate surface water quality monitoring with groups around Texas.

Site Description	Station ID	Waterbody ID	Basin	SE	CE	MT	24 hr DO	Aq/Hab	Benthics	Nekton	Metal Water	Organic Water	Metal Sed	Organic Sed	Conv	Amb Tox Water	Amb Tox Sed	Bacteria	Flow	Fish Tissue	Field	Comments
Segment 803 Lake Livingston Map																						
BEDIAS CREEK IMMEDIATELY DOWNSTREAM OF US 75 SOUTHEAST OF MADISONVILLE Map	10703	0803F	8	TR	LL	RT					2				2			2	2		2	
Segment 804 Trinity River Above Lake Livingston Map																						
TEHUACANA CREEK 20 METERS DOWNSTREAM OF SH 75 SOUTHEAST OF STREETMAN Map	10705	0804F	8	TR	TD	RT					2				2			2	2		2	TRWD Tribs
UPPER KEECHI CREEK IMMEDIATELY UPSTREAM OF FM 542 IN LEON COUNTY Map	20771	0804H	8	TR	LL	RT	2												2			Diels (FY2021-2025)
UPPER KEECHI CREEK IMMEDIATELY UPSTREAM OF FM 542 IN LEON COUNTY Map	20771	0804H	8	WC	FO	RT									4			4	4		4	
FAIRFIELD LAKE IN MAIN POOL 751 METERS SOUTH AND 503 METERS WEST OF NORTH END OF DAM 12.9 KM NORTHEAST OF FAIRFIELD Map	17951	0804J	8	WC	WC	RT									4			4			4	
LOWER KEECHI CREEK 110 METERS UPSTREAM OF FM 811 IN LEON COUNTY Map	20382	0804K	8	WC	FO	RT									4				4		4	
Segment 836 Richland-Chambers Reservoir Map																						
RICHLAND-CHAMBERS RESERVOIR AT NORTH END OF DAM 332 METERS SOUTH AND 555 METERS WEST OF INTERSECTION OF US 287 AND RR 488 Map	15108	0836	8	TR	TD	RT									5			4			5	TRWD Routine Conventioneals and Bacteria also collected below surface depth (0.3m) at this site.
Segment 1203 Whitney Lake Map																						
LAKE WHITNEY AT SH 174 150 METERS NORTH AND 339 METERS EAST OF INTERSECTION OF SH 174 AND BOSQUE CR 1185 NORTHEAST OF MORGAN Map	11853	1203	12	WC	FO	RT									4			4			4	
LAKE WHITNEY NOLANDS RIVER ARM IMMEDIATELY UPSTREAM OF NOLAN RIVER CONFLUENCE WITH THE BRAZOS RIVER Map	11854	1203	12	WC	FO	RT									4			4			4	
LAKE WHITNEY NEAR DAM 810 METERS NORTH AND 235 METERS EAST OF INTERSECTION OF SH 22 AND BOSQUE CR 1812 SITE AC USGS 315203097222601 Map	13987	1203	12	WC	FO	RT									4			4			4	
LAKE WHITNEY 932 METERS NORTH AND 526 METERS WEST OF INTERSECTION OF FM SPUR 1713 AND HILL CR 1228 SITE DC USGS 315722097240201 Map	13990	1203	12	WC	FO	RT									4			4			4	
LAKE WHITNEY WEST OF STEELE CREEK PARK NEAR MIDPOINT OF PENINSULA 985 M NORTH AND 1.07 KM EAST OF INTERSECTION OF BOSQUE CR 1304 AND UNNAMED PARK ROAD TO CAMPGROUNDS CAMS 0723 Map	18654	1203	12	WC	FO	RT									4			4			4	

Assessment: Texas Integrated Report

- **Compares water quality data to approved surface water quality standards**
 - **Identifies impaired waters (303(d) List)**
- **Requirements**
 - **Federal Clean Water Act, Sections 305(b) and 303(d)**
 - **Title 30 of the Texas Administrative Code (30 TAC)**
- **Conducted every two years**
 - **Draft due to EPA on April 1 of even numbered years**

Process

Texas Integrated Report

**Impaired
Waters**

**Assessment
Summaries**

**Overview
documents**

**Develop
guidance**

**Compile
data**

**Assess
Data**

**Develop
reports**

**Public
comment**

**Revise
documents**

**TCEQ
approval**

**EPA
approval**



Impaired
Waters

Texas Integrated Report



Assessment
Summaries



Overview
documents

- **Texas 303(d) List**
- **Index of Water Quality Impairments (Categories 4 and 5)**



Assessment
Summaries

Texas Integrated Report



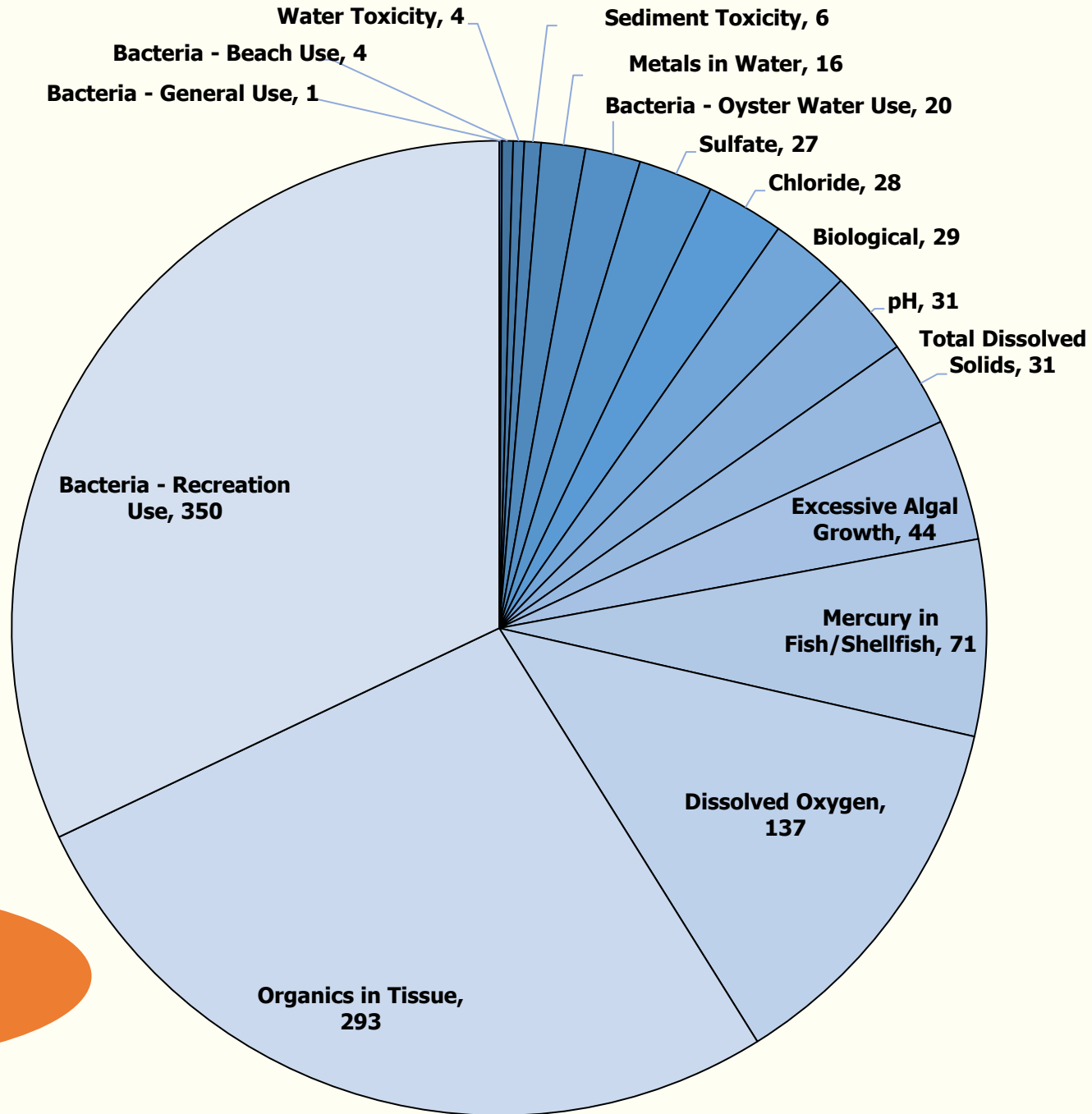
Overview
documents

- **Water Bodies Evaluated**
- **Water Body Assessments by River Basin**
- **Water Bodies with Concerns for Use Attainment and Screening Levels**
- **Potential Sources of Pollution for Impairments and Concerns**
- **New Listings**
- **De-Listings**

Texas Integrated Report

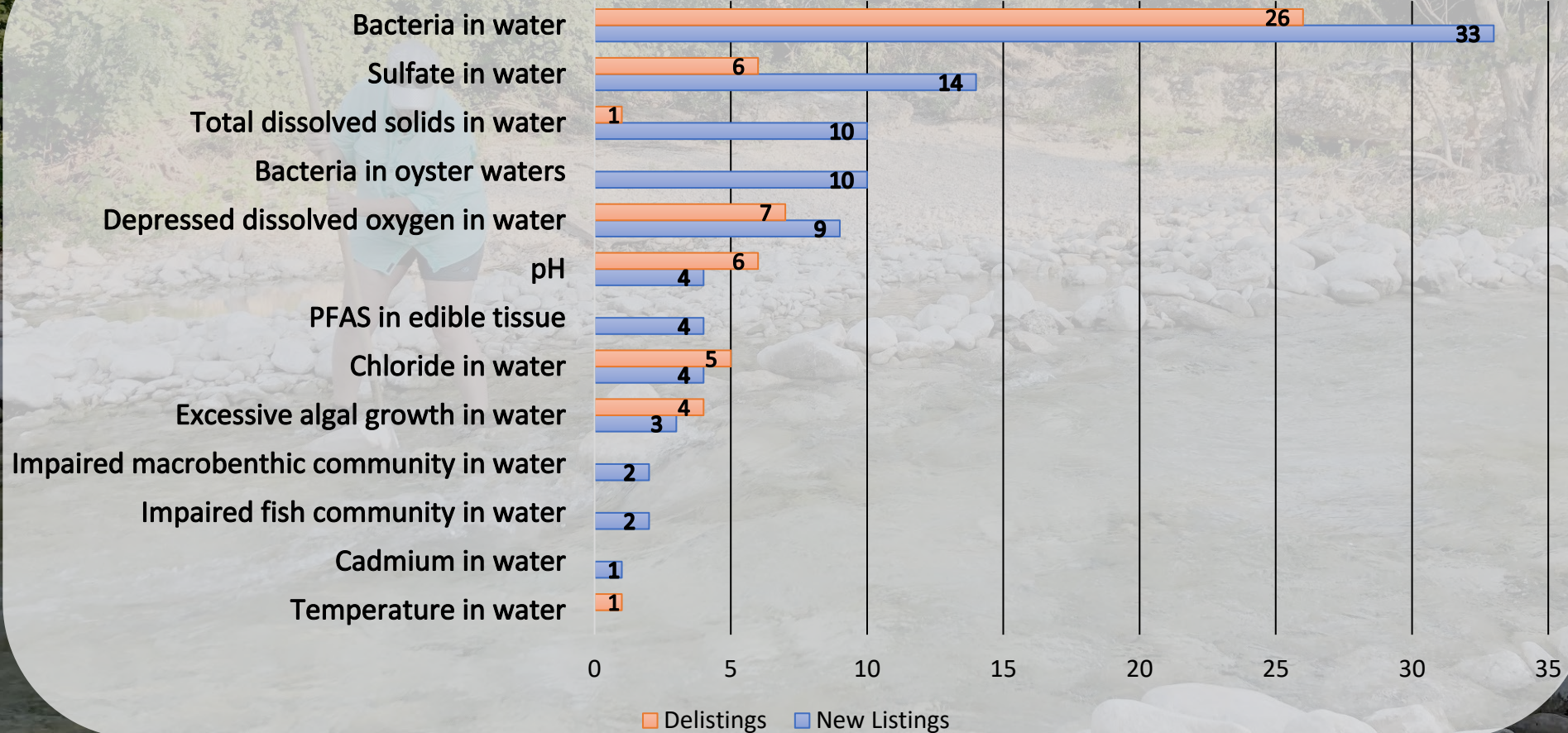
- **Executive Summary Table**
- **Trophic Classification of Texas Reservoirs**
- **Guidance for Assessing and Reporting Surface Water Quality in Texas**
- **Groundwater Assessment**

2024 303(d) Impairments (Assessment Units)



1092 impairments

303(d) Impairment Changes 2022-2024



2026 Integrated Report Timeline

- **Advisory Workgroup Meeting – November 7, 2024**
- **EPA Approval of 2024 IR – November 13, 2024**
- **Assess Data – Summer 2025**
- **Public Comment – November 2025 – December 2025**
- **TCEQ Agenda – Spring 2026**

Contact Information



- swqm@tceq.texas.gov

- **Ivan Cruickshank**

CWQMN Coordinator

Ivan.Cruickshank@tceq.texas.gov

(512) 239-1166

